

# COVID-19 Update

**Lawrence Loh, MD MPH FCFP FRCPC FACPM**  
**Medical Officer of Health, Region of Peel**  
March 11, 2021

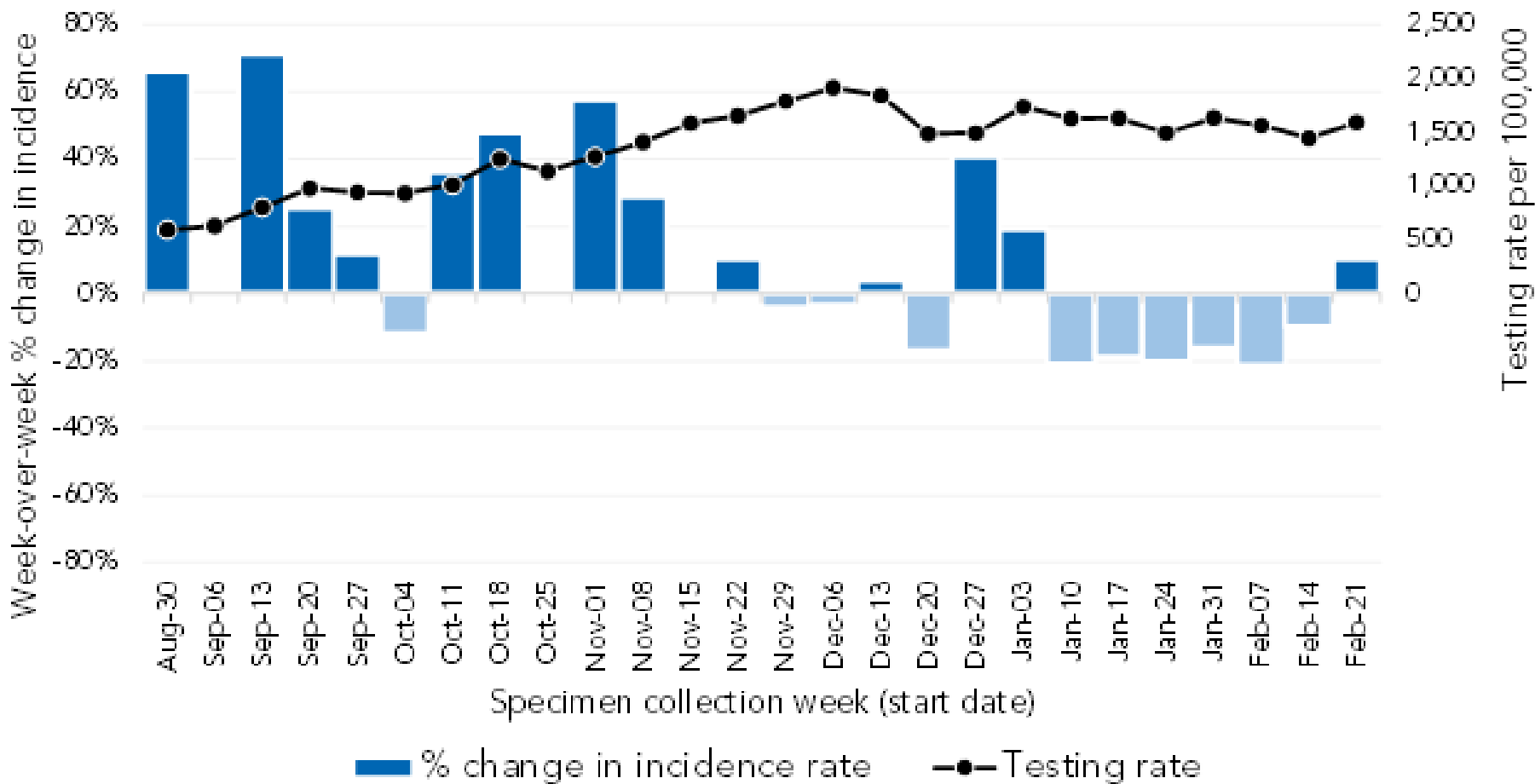


# Agenda

- COVID-19 situation update
- Provincial response framework
- Community Mass Vaccination Plan update
- Balancing our resources

# COVID-19 in Peel

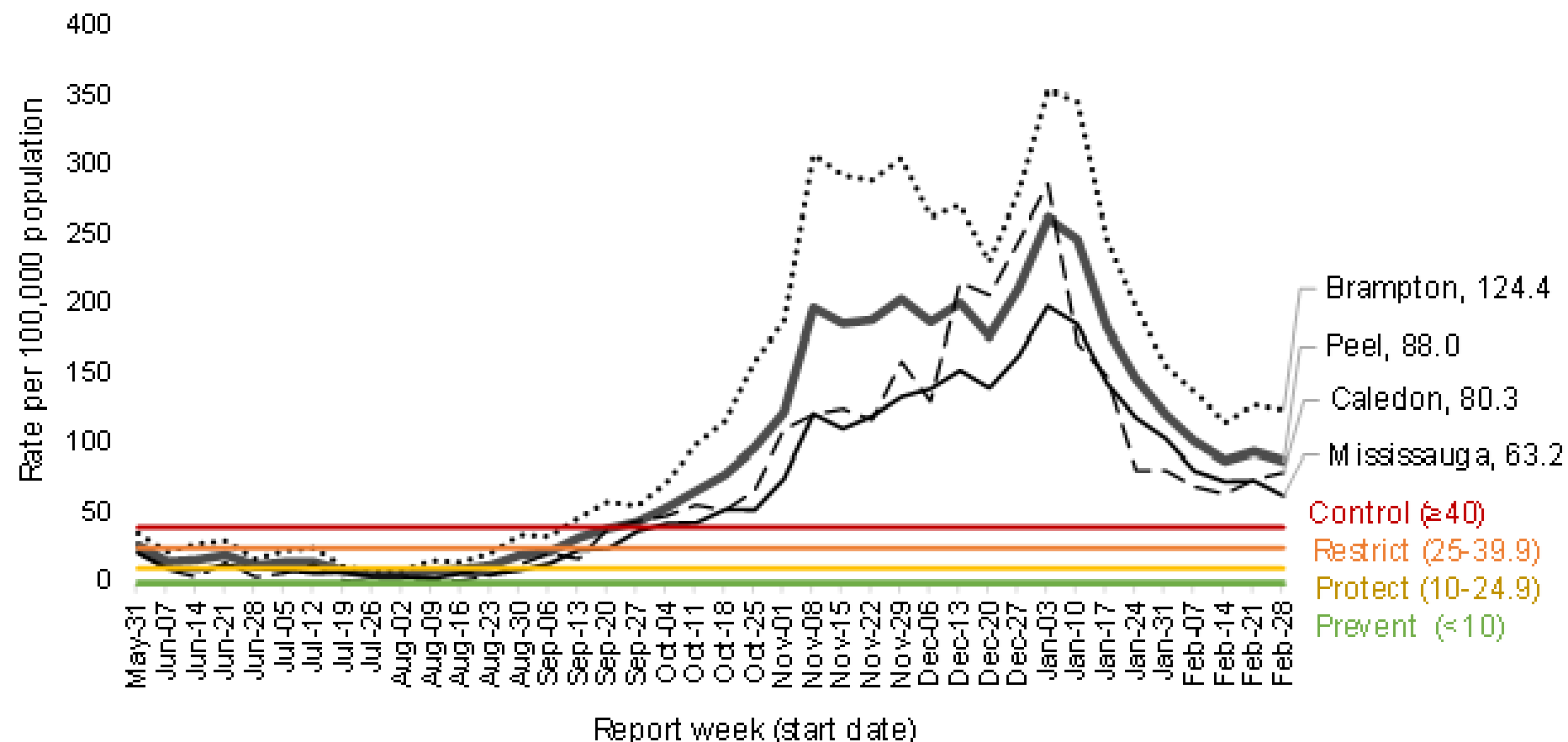
## Peel



For specimens collected the week of February 21<sup>th</sup> (i.e., cases reported early last week), we saw an increase in incidence.

Sources: Ontario Ministry of Health, Case and Contact Management Solution, extracted [04/Mar/2021]; Ontario Ministry of Health, Ontario Laboratory Information System (OLIS), extracted [03/Mar/2021]; Population Estimates, 2020, Statistics Canada. IntelliHEALTH Ontario, Ministry of Health.  
8.1-3

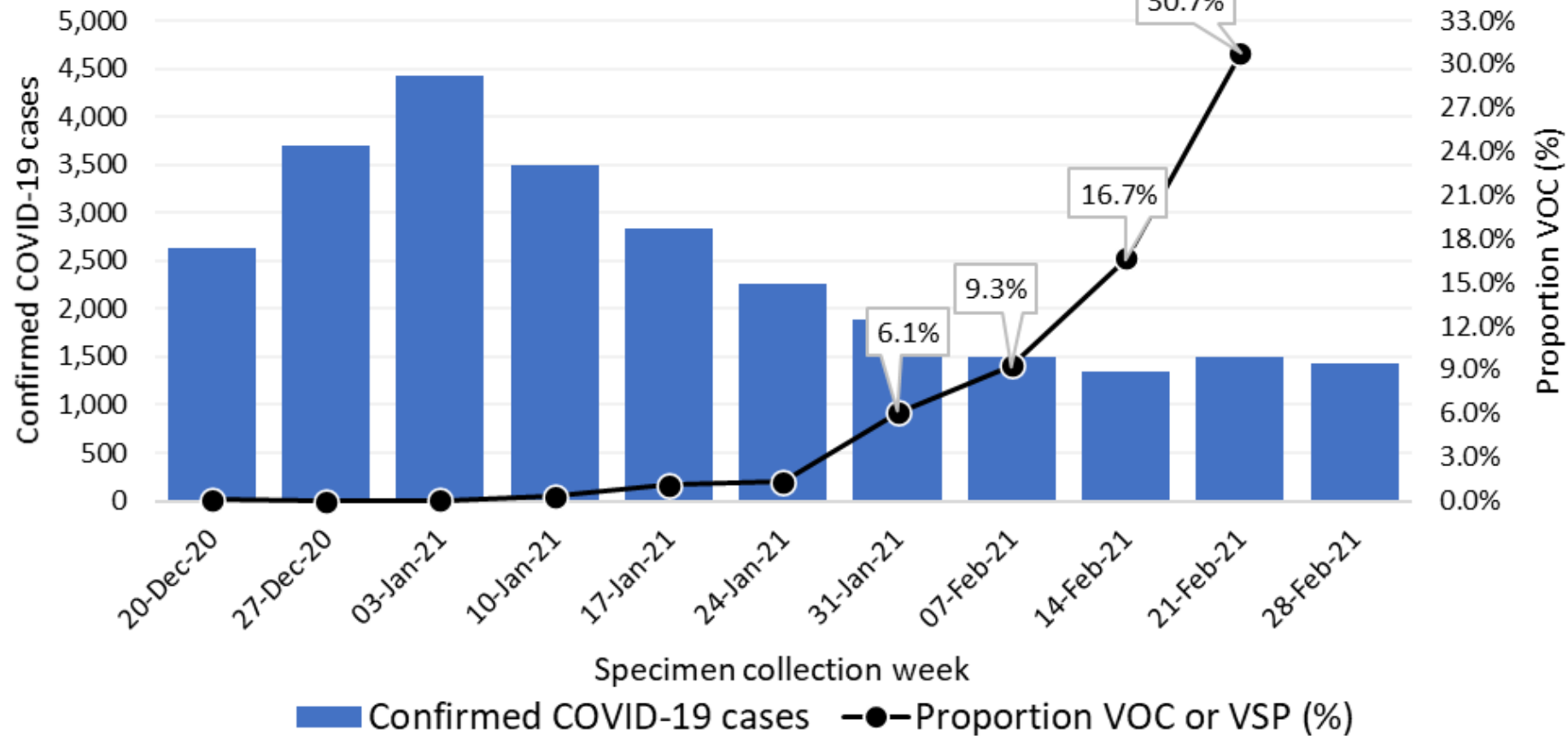
Weekly COVID-19 incidence rates by Peel municipality: May 31, 2020 to March 6, 2021



A plateau in incidence is seen in the trends for all municipalities.

Sources: (Case data) Ministry of Health, Case and Contact Management Solution, extracted by Peel Public Health on [09/Mar/2021], (2019 municipality population estimates) Population Estimates, 2019, Statistics Canada. Ministry of Health, (2020 Peel population projection) Population Projections, 2020, Statistics Canada. IntelliHEALTH Ontario, Ministry of Health.

## Weekly proportion of COVID-19 cases that are VOC (screen-positive or confirmed), Peel

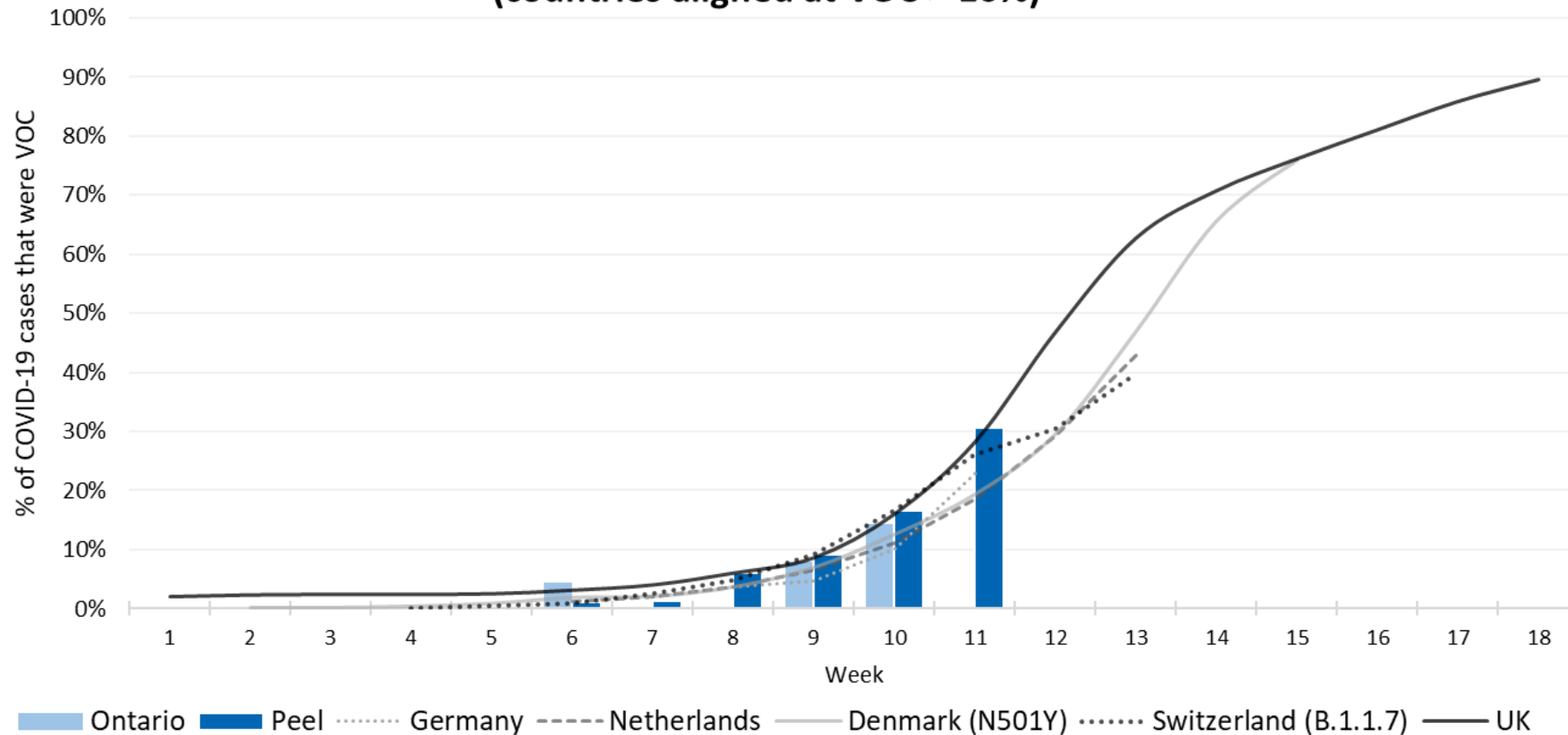


Data for the week of Feb 28 to Mar 6, 2021 are preliminary.

Source: Ministry of Health, Case and Contact Management Solution, extracted by Peel Public Health, 09 Mar 2021, 12pm

B.1.1.7 is also now detectable in Peel wastewater and reflects VOC activity in the community.

## Per cent of COVID-19 cases that are variants of concern (VOC) (countries aligned at VOC > 10%)



Notes: Week 11 for Peel (week of specimen collection) was February 21-27, 2021.

Sources: Ministry of Health, Case and Contact Management Solution, extracted March 9, 2021 at 12pm (Peel); PHO (Ontario), Robert Koch Institute (RKI), Rijksinstituut voor Volksgezondheid en Milieu (RIVM), Danish Covid-19 Consortium, SARS-CoV-2 Variants of Concern in Switzerland, Public Health England

Peel and Ontario are on a trajectory with variant growth that is on par with Denmark and other European countries.

Within 4 weeks, variants will be the dominant strain.

This will be well before vaccines are available for most.

With rapid spread from VOCs, if COVID-19 in the community is higher, we will need higher vaccine coverage for population level immunity.

# COVID-19 Response Framework

Feature/Setting	Grey – Lockdown (from March 8 <sup>th</sup> )
Gatherings	No indoor (except household) 10 people outdoors
Religious Services, Rites or Ceremonies	10 people indoors and 10 people outdoors
Restaurants, Bars and Other F&D Establishments	Take out only
Sports and Recreational Fitness Facilities	Closed with exceptions Outdoor recreational amenities open with restrictions
Meeting and Event spaces	Closed with exceptions
Retail	50% capacity limit (primarily food or pharmacy) 25% for all other retail, including big box retailers
Personal Care Services	Closed
Casinos, Bingo Halls and Gaming Establishments	Closed
Cinemas	Closed except drive-in
Performing Arts Facilities	Closed to spectators

**As the new variants spread more easily, continued public health measures will help slow transmission and allow for the critical time needed to increase vaccination coverage among Peel residents.**

# Community Mass Vaccination Plan Update



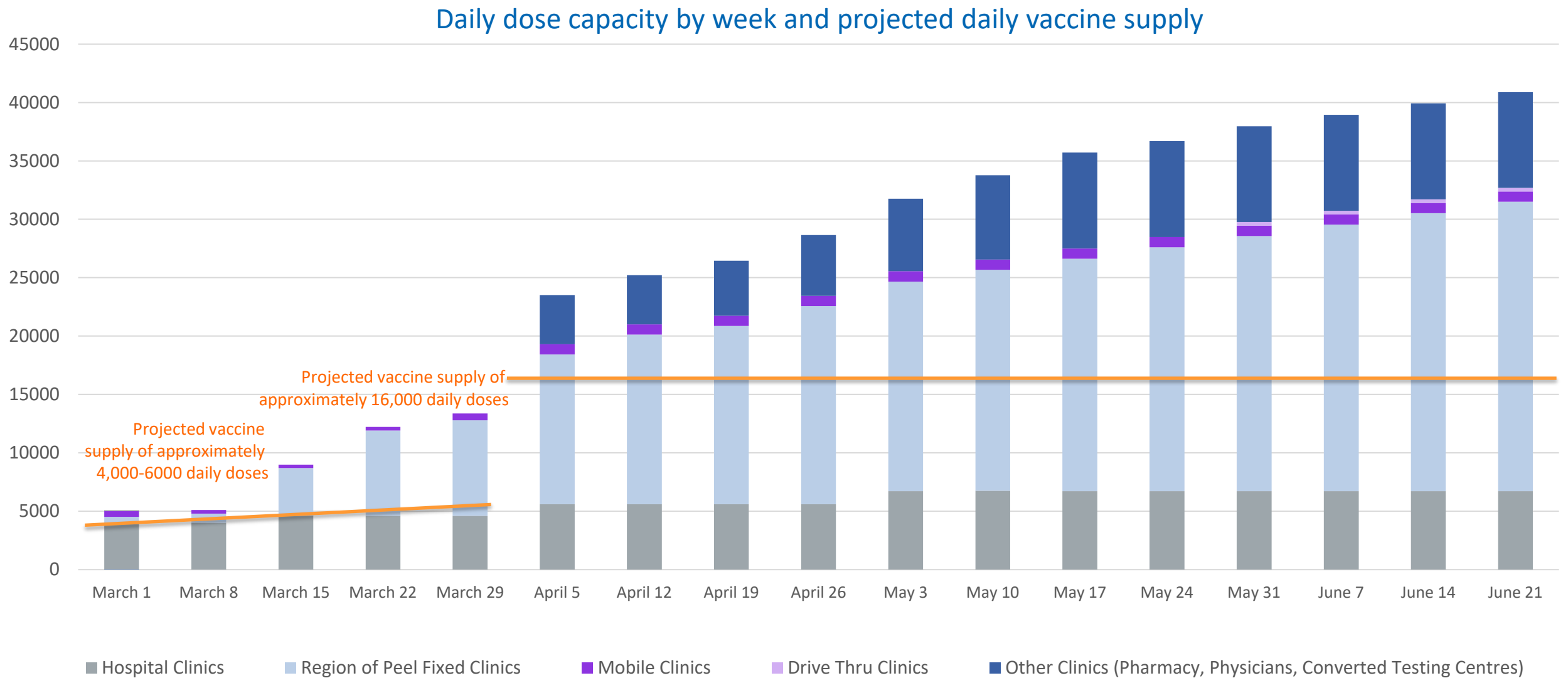


# Clinic Readiness

Mass Vaccination Approaches	
Fixed Clinics:	Clinic Ready Date
Trillium Health Partners (THP) – <b>Open</b>	<b>Dec. 22</b>
William Osler Health System (WOHS) – <b>Open</b>	<b>Dec. 22</b>
WOHS Chinguacousy Wellness Centre – <b>Open</b>	<b>Jan. 13</b>
7120 Hurontario St., Mississauga – <b>Open</b>	<b>Feb. 11</b>
10 Peel Centre Drive, Brampton – <b>Open</b>	<b>Feb. 16</b>
Save Max (BSC), Brampton - <b>Open</b>	<b>Mar. 1</b>
THP UTM RAWC Clinic, Mississauga - <b>Open</b>	<b>Mar. 1</b>
Paramount Field House, Mississauga - <b>Open</b>	<b>Mar. 3</b>
Caledon East Community Complex, Caledon* - <b>Open</b>	<b>Mar. 6</b>
International Centre - <b>Open</b>	<b>Mar. 10</b>
Chris Gibson Arena, Brampton	Apr. 6
<b>Mobile Clinics - Underway</b>	<b>Dec. 31</b>
<b>Drive-Thru</b>	In planning - Spring
<b>Primary Care</b> – currently supporting fixed clinics (Phase 1)	Phase 2/3
<b>Pharmacy</b>	Provincial Direction
<b>Converted Testing Centres</b>	Phase 2/3

\* All ROP sites planned for operating 7 days a week, except for Caledon East CC, which is closed on Fridays for COVID-19 testing

# Mass Vaccination System Overview



## Phase 1 Priority Groups – Status Update (as of Mar. 8)

Sub-group	Examples of Sub-groups	Estimated Population Size	Clinic Model	Status
Phase 1a				
Long-Term Care Homes & High-risk Retirement Homes	Residents, staff and essential caregivers	12,619	Mobile (for residents) Hospital (for staff, caregivers)	<ul style="list-style-type: none"> <li>Substantially complete for residents</li> <li>In progress for staff and essential caregivers</li> </ul>
Alternate Level of Care Patients	Hospital patients with confirmed admission to long term care/retirement homes or other congregate care settings	N/A	Hospital	<ul style="list-style-type: none"> <li>In progress</li> </ul>
Highest & Very High Priority Health Care Workers (HCWs)	<ul style="list-style-type: none"> <li>Hospital and acute care staff, medical first responders (e.g. paramedics, fire, police)</li> <li>COVID-19 response teams (e.g. assessment and testing centres, immunization teams)</li> <li>Community health centres, adult day services, congregate settings, primary care and community physicians/specialists, dentists and office staff, pharmacists and pharmacy staff</li> <li>Other specialties (e.g. midwifery, birth centres, lab services)</li> </ul>	56,692+ (large group only some #s are known)	Hospital Community	<ul style="list-style-type: none"> <li>Substantially complete for hospital, acute care, medical first responders, COVID-19 response teams</li> <li>In progress for other HCWs</li> </ul>
Phase 1b				
Low-risk Retirement Homes	Residents, staff and essential caregivers	790	Mobile (for residents) Hospital (for staff, caregivers)	<ul style="list-style-type: none"> <li>Substantially complete for residents</li> <li>In progress for staff and essential caregivers</li> </ul>
Seniors 80+ and Seniors living in Congregate Settings	Seniors 80+ living in the community and in congregate settings (e.g. TransHelp clients; residents in Peel Housing Corporation and other Social Housing)	51,500	Mobile Hospital	<ul style="list-style-type: none"> <li>In progress for hospital and mobile clinics</li> </ul>
Indigenous Adults	Individuals living in Peel urban communities who identify as First Nations, Métis and/or Inuit.	9,120	Mobile Community	<ul style="list-style-type: none"> <li>To be sequenced next</li> </ul>
High Priority HCWs	Other patient-facing community-based providers (e.g. mental health and addictions, social work, sexual health, public health)	N/A – large group #s are unknown	Hospital Community	<ul style="list-style-type: none"> <li>To be sequenced next</li> </ul>
Adult Recipients of Chronic Home Care	Individuals living in the community	8,305	Mobile Community Hospital	<ul style="list-style-type: none"> <li>To be sequenced next</li> </ul>

# Planning for Phase 2 Priority Groups

- Ministry guidance for vaccine roll-out of Phase 2 priority groups and sequencing released on March 5th, 2021
- Planning and engagement is underway to support vaccine confidence and readiness across priority groups
- To increase system capacity, Peel was selected as one of six pilot public health units to administer vaccines across select primary care providers
  - Pilot will focus on individuals living in the community that are between ages 60 – 64
  - A similar pilot running for Pharmacies in other parts of the province

Phase 2 Priority Groups	Examples	Anticipated Timing (based on Ministry guidance, however contingent on vaccine supply)
<b>Seniors and Older Adults</b>	<ul style="list-style-type: none"> <li>• Seniors and older adults living in the community, focusing on those 75-79 years of age first, and then decreasing in 5-year increments over the course of the vaccine roll-out</li> </ul>	Mar – Jun 2021
<b>High risk congregate settings</b>	<ul style="list-style-type: none"> <li>• People living and working in high-risk congregate settings (e.g. supportive housing, shelters, mental health and addictions settings, correctional facilities)</li> </ul>	Apr – Jun 2021
<b>Individuals with high-risk chronic conditions and their caregivers</b>	<ul style="list-style-type: none"> <li>• People living with high-risk chronic conditions, some primary caregivers (e.g. organ transplant recipients, neurological diseases, obesity, dementia, diabetes)</li> </ul>	Apr – Jun 2021
<b>Communities at greater risk</b>	<ul style="list-style-type: none"> <li>• People facing socio-economic barriers</li> <li>• Hotspots with historic and ongoing high rates of death, hospitalization and transmission</li> </ul>	Apr – Jun 2021
<b>Essential frontline workers that cannot work from home</b>	<ul style="list-style-type: none"> <li>• Rollout to essential workers focused on individuals that cannot work from home</li> <li>• Sectors prioritized first include: education/child care, first responders, food manufacturing and agricultural/farm workers, etc.</li> <li>• Sectors prioritized next include: retail, manufacturing labourers, social workers, court and justice, transportation, warehousing and distribution, waste management, etc.</li> </ul>	Jun 2021

# Extension of Interval for 2-Dose Vaccines

- To be able to vaccinate more population with their first dose, new Provincial direction
  - Second doses will be extended by as much as 4 months
  - Except for:
    - Residents in long-term care, retirement homes, and assisted living facilities, according to Provincial guidance
    - Those in remote and First Nations communities
- Rescheduling of appointments began March 10<sup>th</sup> in line with Provincial direction

# Balancing our Resources

## Immunization Clinics

- Hiring 1,600 staff across the system
- Includes new hires, redeployments, secondments, paramedics, primary care physicians

**A surge in cases will have a great impact in our capacity to balance already strained resources**

## COVID-19 Response

- Case and contact management
- Surveillance
- More than 80% out of 636 Public Health staff redeployed
- 435 new hires in Public Health
- Concerns with attrition

## Critical Public Health Programs with Limited Level of Service

- Public Health Inspections
- Communicable Diseases
- Harm Reduction
- Ontario Seniors Dental Care Program
- Healthy Babies Healthy Children

**High population health impact of:**

- **Programs on hold**
- **Closing more programs**

# Summary of Key Messages

- Slow transmission related to the increase in VOCs in Peel
- Re-open gradually and reinforce our core four behaviours
- Continue to work collaboratively to vaccinate our priority populations
  - For information, visit <https://peelregion.ca/coronavirus/vaccine/>
- Manage current system risks, including:
  - Provincial vaccine allocation
  - Balancing resources

**Thank you.**

