



Greenlands System

Draft Policies and Mapping

Planning and Growth Management Committee

March 18, 2021

Learie Miller

Advisor Environmental Planning

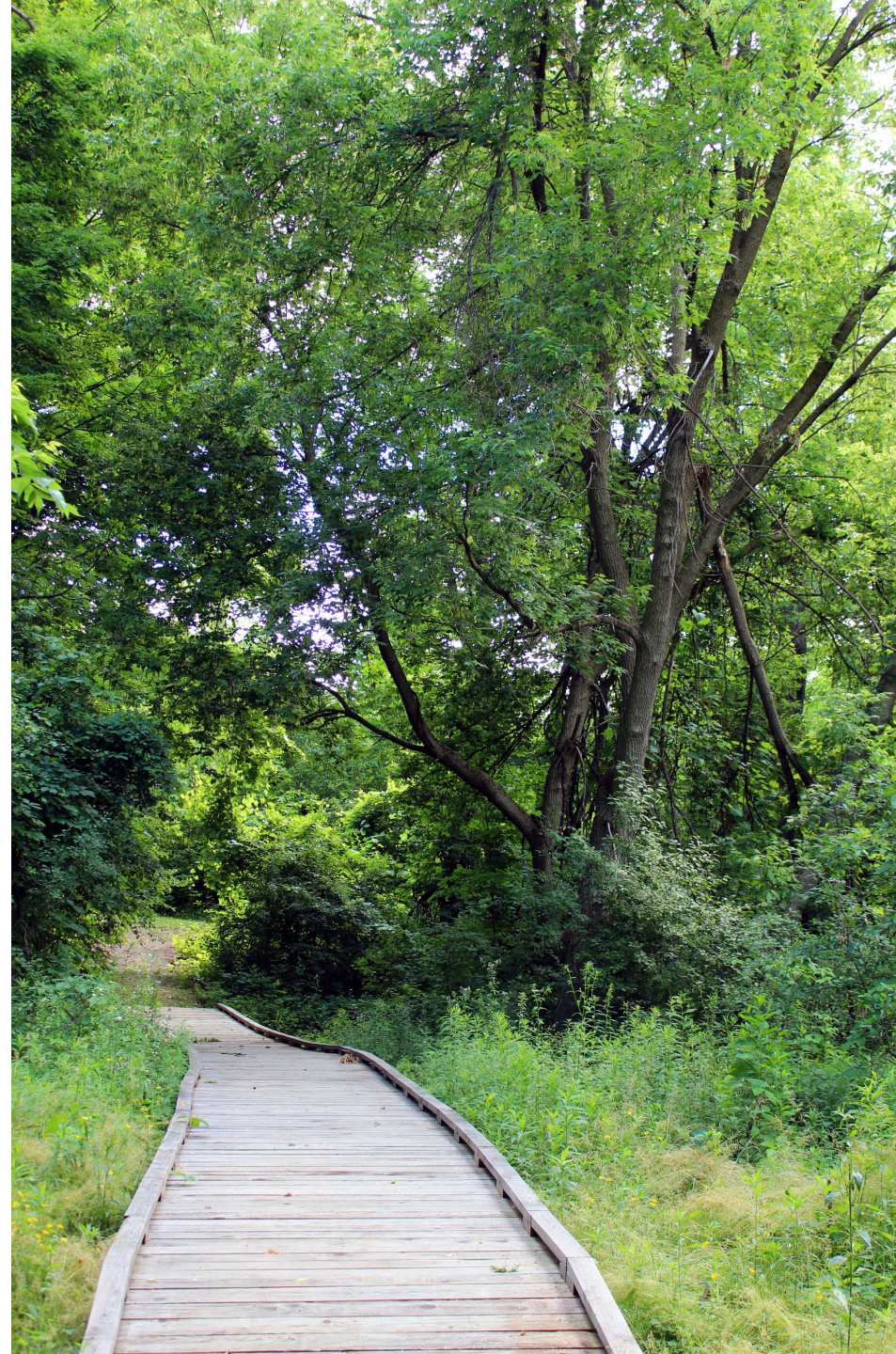
Regional Planning & Growth Management Division

Region of Peel



Introduction

Greenlands systems, also referred to as natural heritage systems, are broadly defined as systems made up of natural heritage features and areas and linkages that provide connectivity between natural heritage features and areas for the movement of plants and animals.





Policy Overview

- Ensure conformity with provincial policy
- Review Natural Heritage System (NHS) planning policies
- Transition from feature-based to system-based NHS
- Integrate recent local municipal and conservation authority NHS policies and studies
- Discussion paper, draft policies and mapping
- Mapping updates include:
 - Provincial Plan NHS System designations
 - Core Areas of the Greenlands System mapping layers

Peel2041

Regional Official Plan Review

Greenlands System

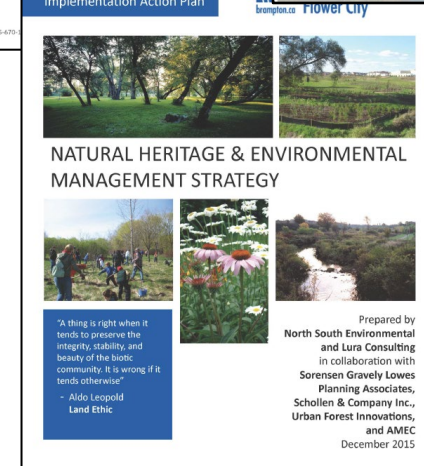
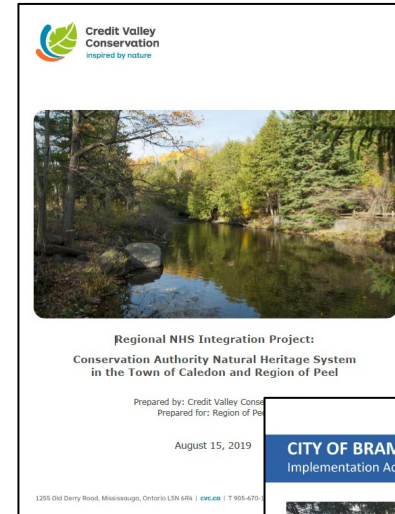
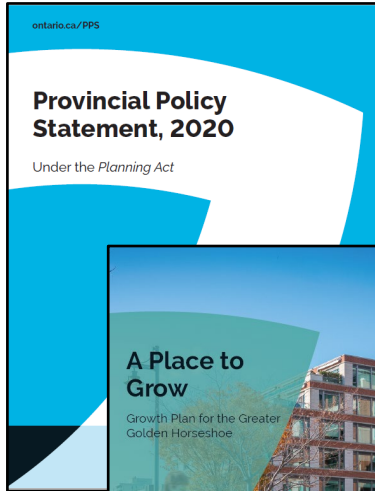
Peel 2041 Discussion Paper

May 2020





Policy Context & Background Studies





Consistency with Provincial Policies and Plans

Provincial Policy Statement, Natural Heritage (2.1)

- Requires natural heritage systems to be identified, maintained, restored or, improved, recognizing linkages between and among natural heritage features and areas, surface water features and ground water features (2.1.2 and 2.1.3)

Growth Plan Policies for Protecting What is Valuable (4.2)

- Requires identification and protection of the Natural Heritage System (NHS) for the Greater Golden Horseshoe outside settlement areas and Greenbelt areas as an overlay
- Municipalities are required to incorporate the Growth Plan NHS mapping and policies in their official plans and identify Urban River Valley designations



Proposed Policies

Revised Official Plan s. 2.3.2.1 Regional Greenlands System Definition

- Regional Official Plan policies build on the systems approach in provincial policies and plans
- Recognizes the significant landscapes and natural heritage system designations of the provincial plans as components
- Retains the Regional Greenlands System Core Areas, Natural Areas and Corridors (NAC) and Potential Natural Areas and Corridors (PNAC) policy framework

Revised Official Plan s. 2.3.2.3 Agricultural Uses

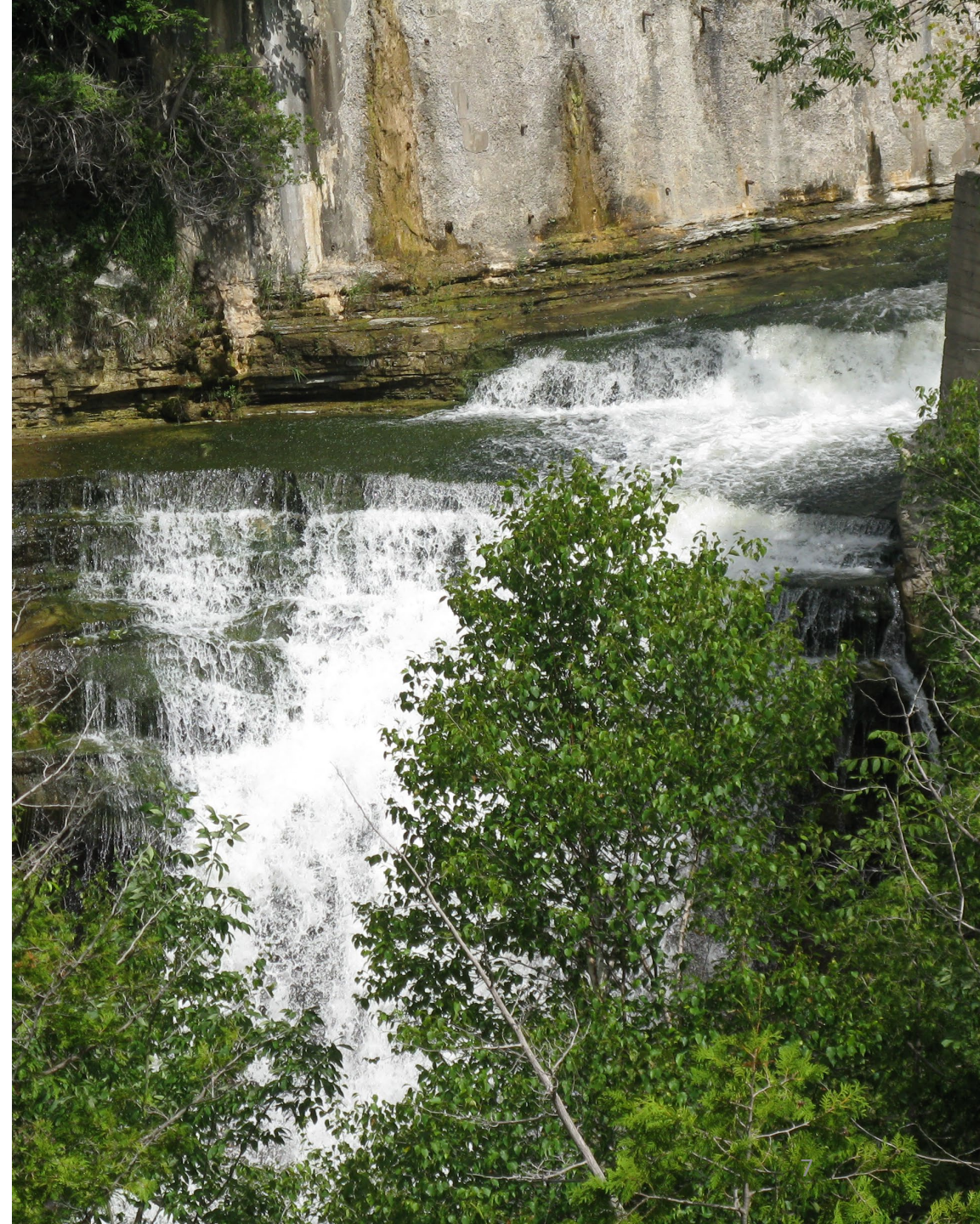
- The relationship and overlap between the Greenlands System and Agricultural System is updated to permit continuation of agricultural uses in accordance with normal farm practices



Proposed Policies

New s. 2.3.2.30 Greenlands System Protection, Restoration and Enhancement and 2.3.3 Urban Forest

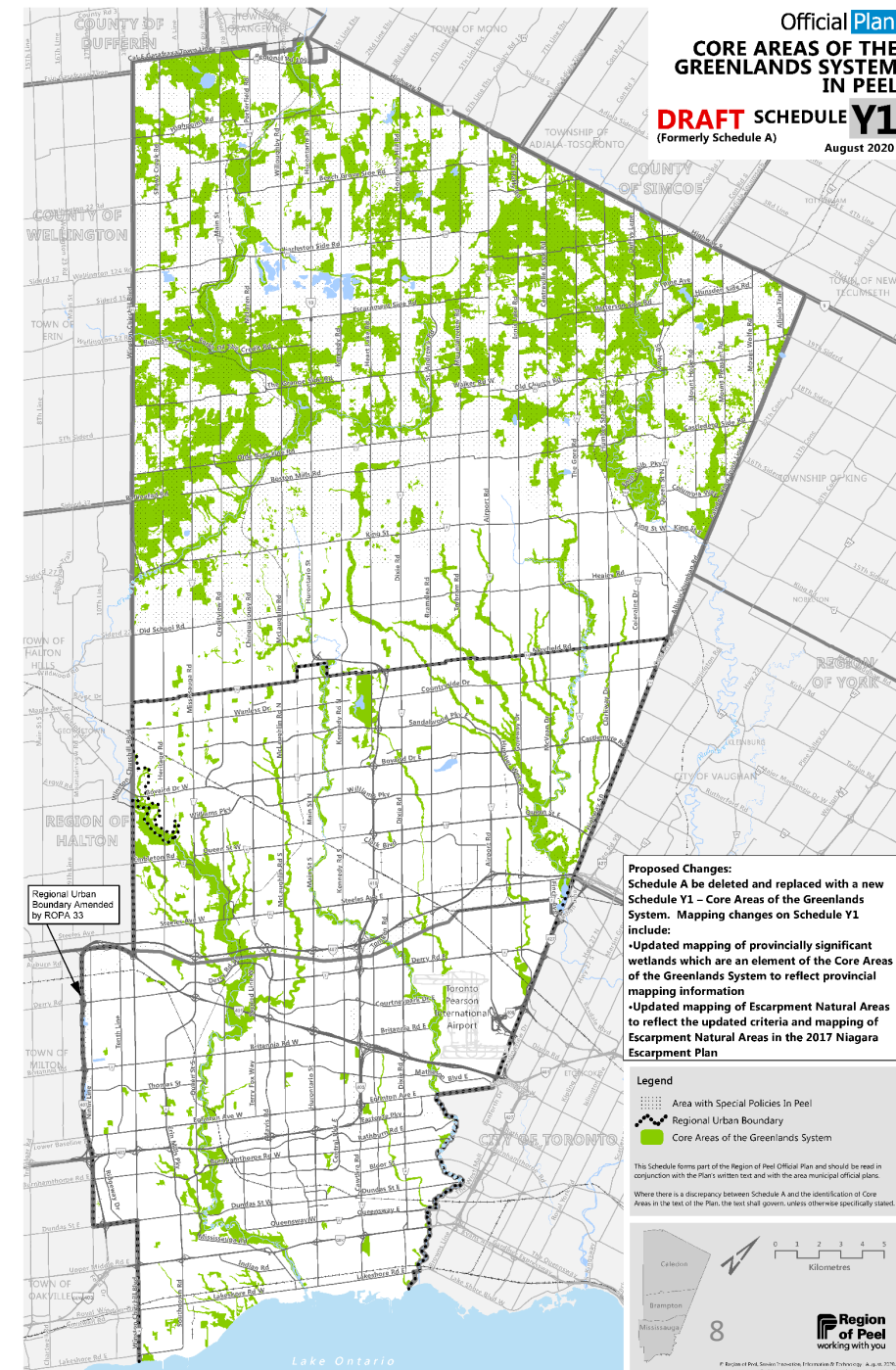
- Requires identification of natural heritage systems in local official plans
- Requires identification and protection of enhancement areas and linkages among and between components of the Greenlands System
- Clarifies requirements for environmental impact studies on adjacent lands
- Policy section added to protect, maintain and enhance the urban forest.





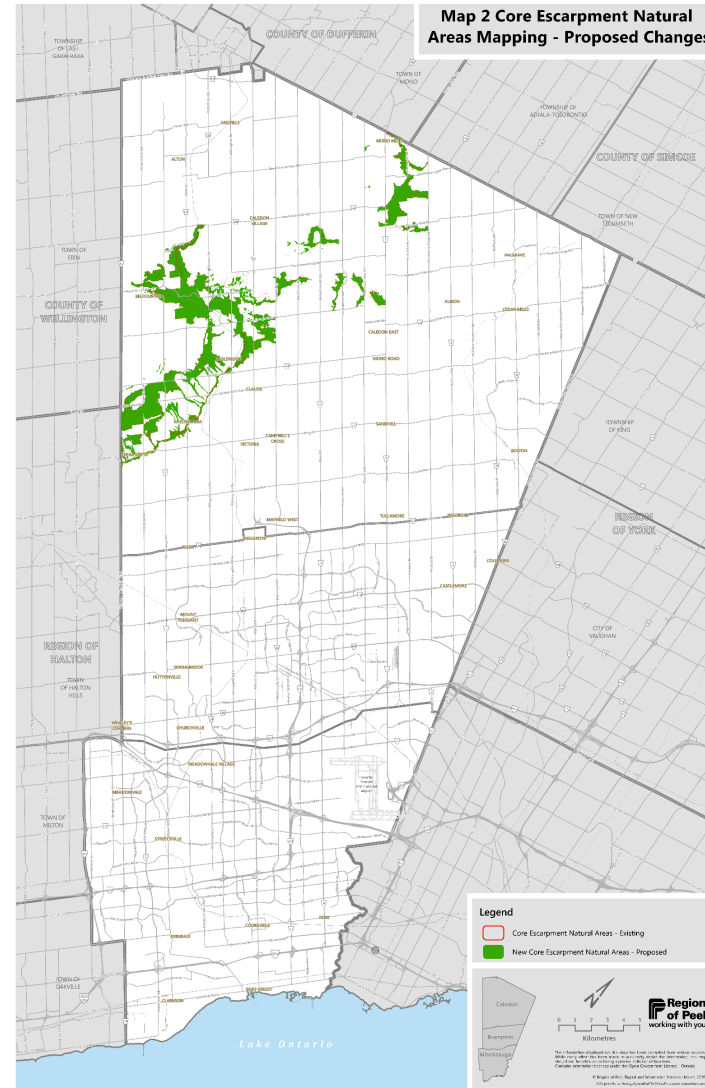
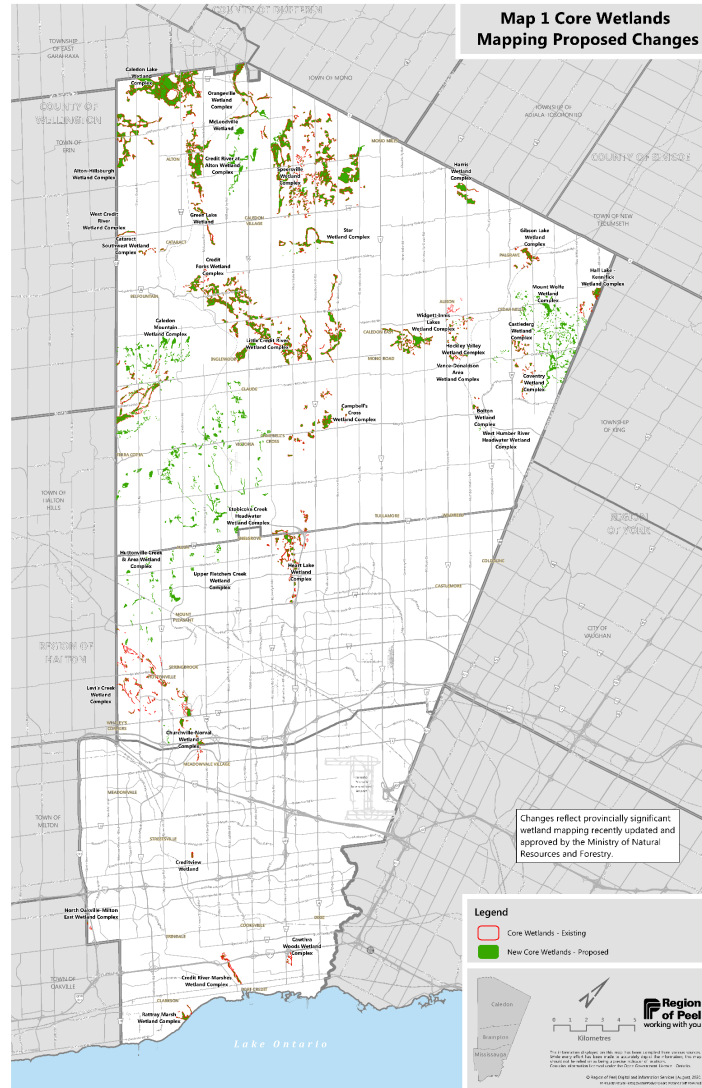
Core Areas of the Greenlands System in Peel – Schedule Y1

- Represent provincially and regionally significant features and areas
- Criteria in Plan identify Core Areas:
 - Provincially significant wetlands
 - Woodlands
 - Valley and stream corridors (main branches, major tributaries and other tributaries)
 - ESAs and Provincial Life Areas of Natural and Scientific Interest
 - Escarpment Natural Areas





Contributing Mapping Changes to Schedule Core Areas of the Greenlands System

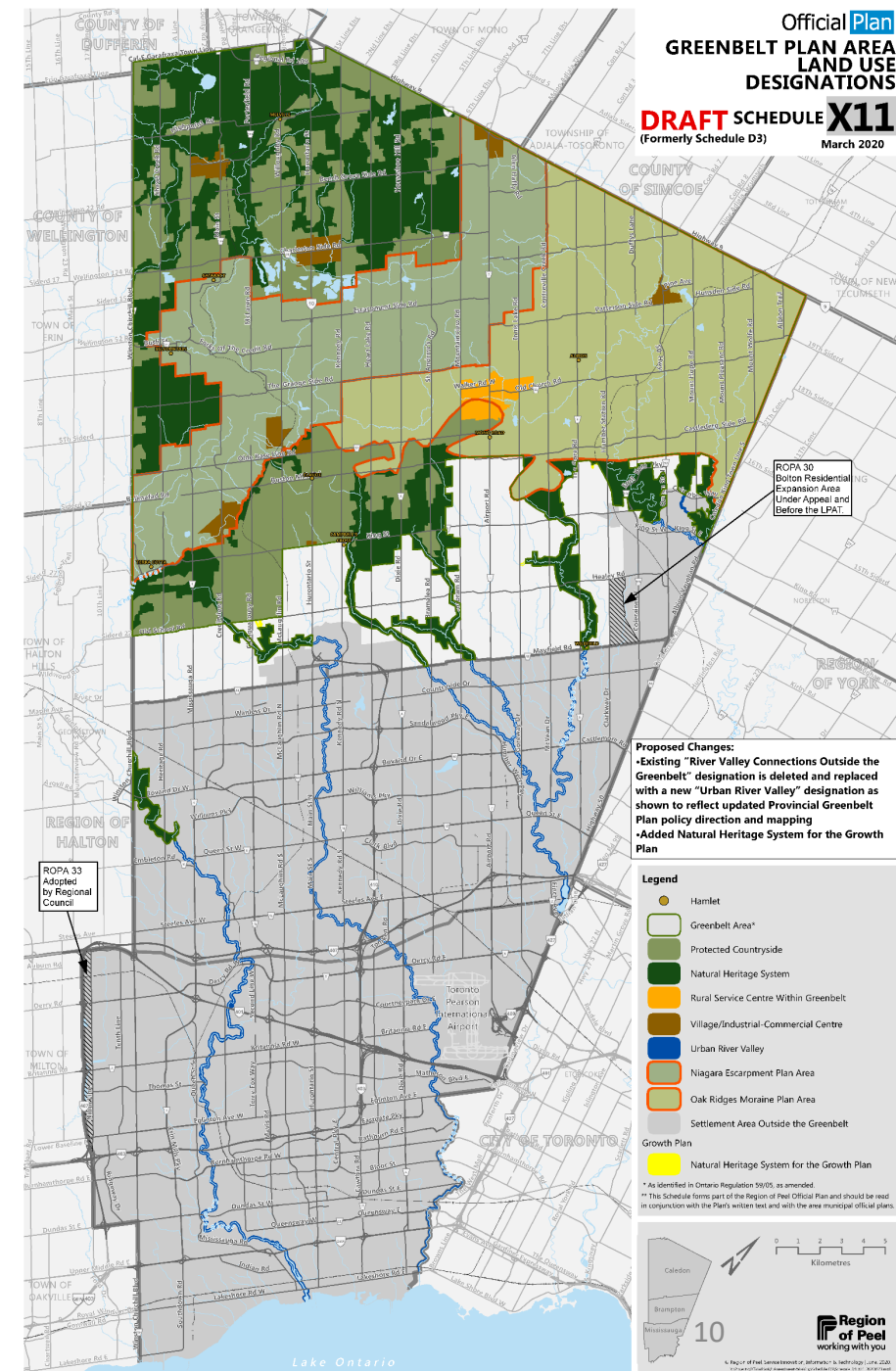




Greenbelt Plan Area Land Use Designations – Schedule X11

Schedule X11 amended by adding:

- Natural Heritage System (overlay) for the Growth Plan
- No negative impacts on key features
- Connectivity will be maintained or, where possible, enhanced
- Disturbed area requirements for aggregates resources uses and golf courses
- Natural heritage and hydrologic evaluations required on adjacent lands (within 120 m)
- Refinements to the Natural Heritage System only through a municipal comprehensive review



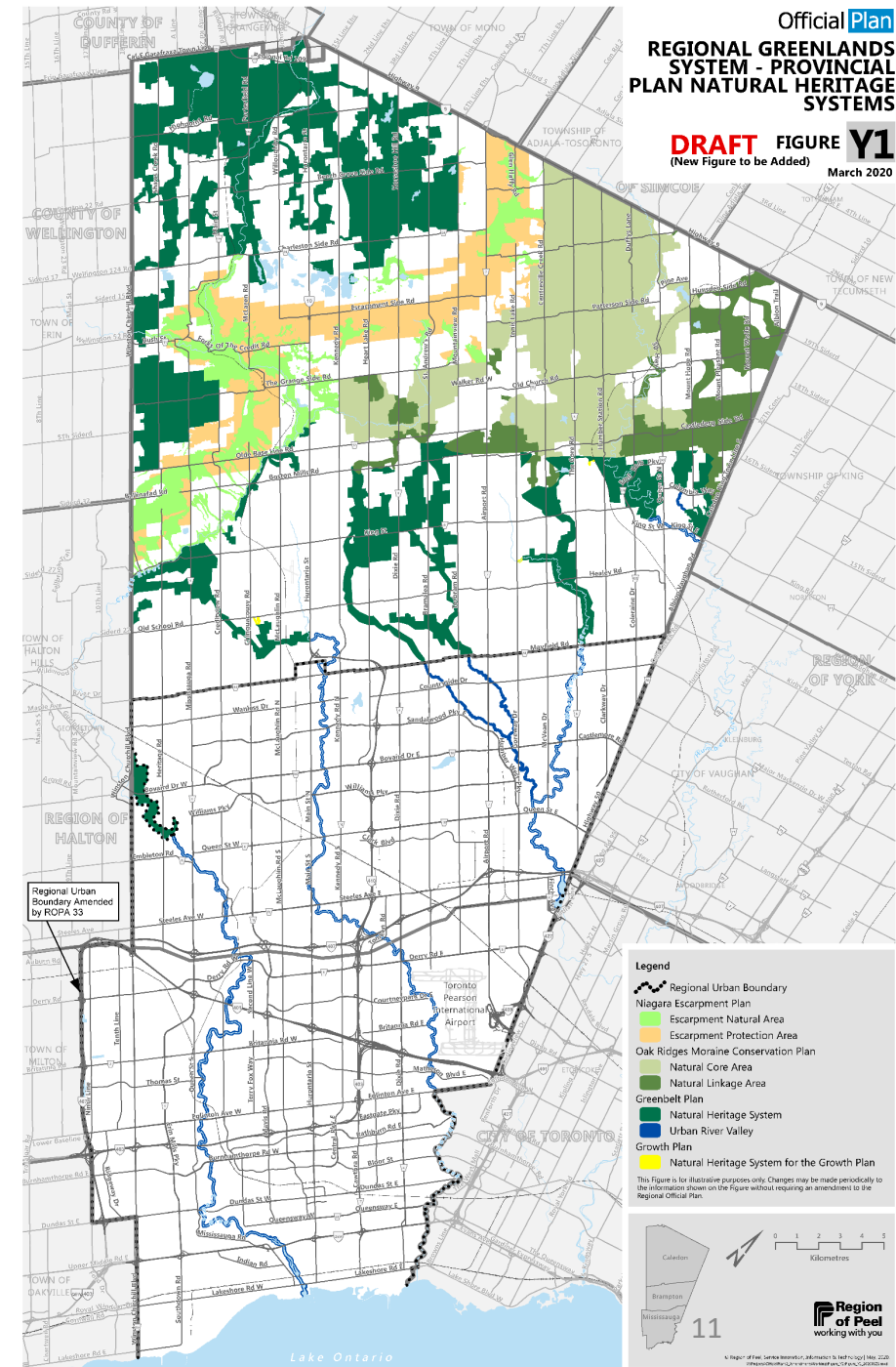


Provincial Natural Heritage System – Figure Y1

Figure Y1 depicts the provincial plan natural heritage system overlays and designations applicable to Peel.

“The significant landscapes and natural heritage system designations of the provincial plans are fundamental building blocks of the Greenlands System framework along with policies that provide for the protection of key natural heritage features, key hydrologic areas and key hydrologic features.”

Regional Official Plan, Section 2.3





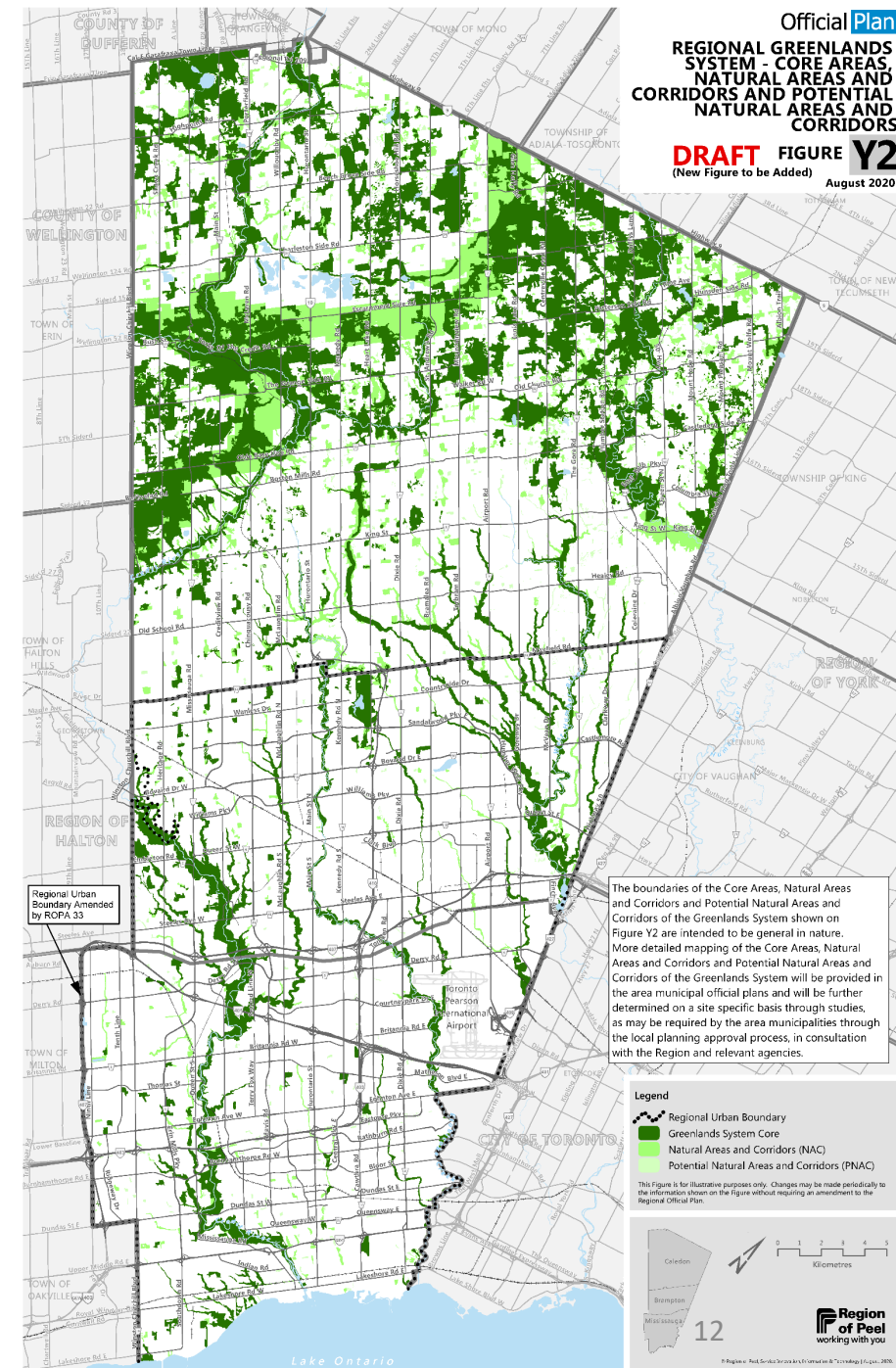
Greenlands Core Areas, Natural Areas & Corridors, and Potential Natural Areas & Corridors – Figure Y2

- Greenlands System features and areas are further interpreted and identified in local municipal official plans
- Framework implements provincial policy direction for the protection, restoration and enhancement of **natural heritage features and areas** at a regional level

“The policy framework provides for the Core, NAC and PNAC components of the Greenlands System to be combined, restored and enhanced to provide an integrated natural heritage system for the region.”

Regional Official Plan, Section 2.3

5.5-12





Conservation Authority Natural Heritage System

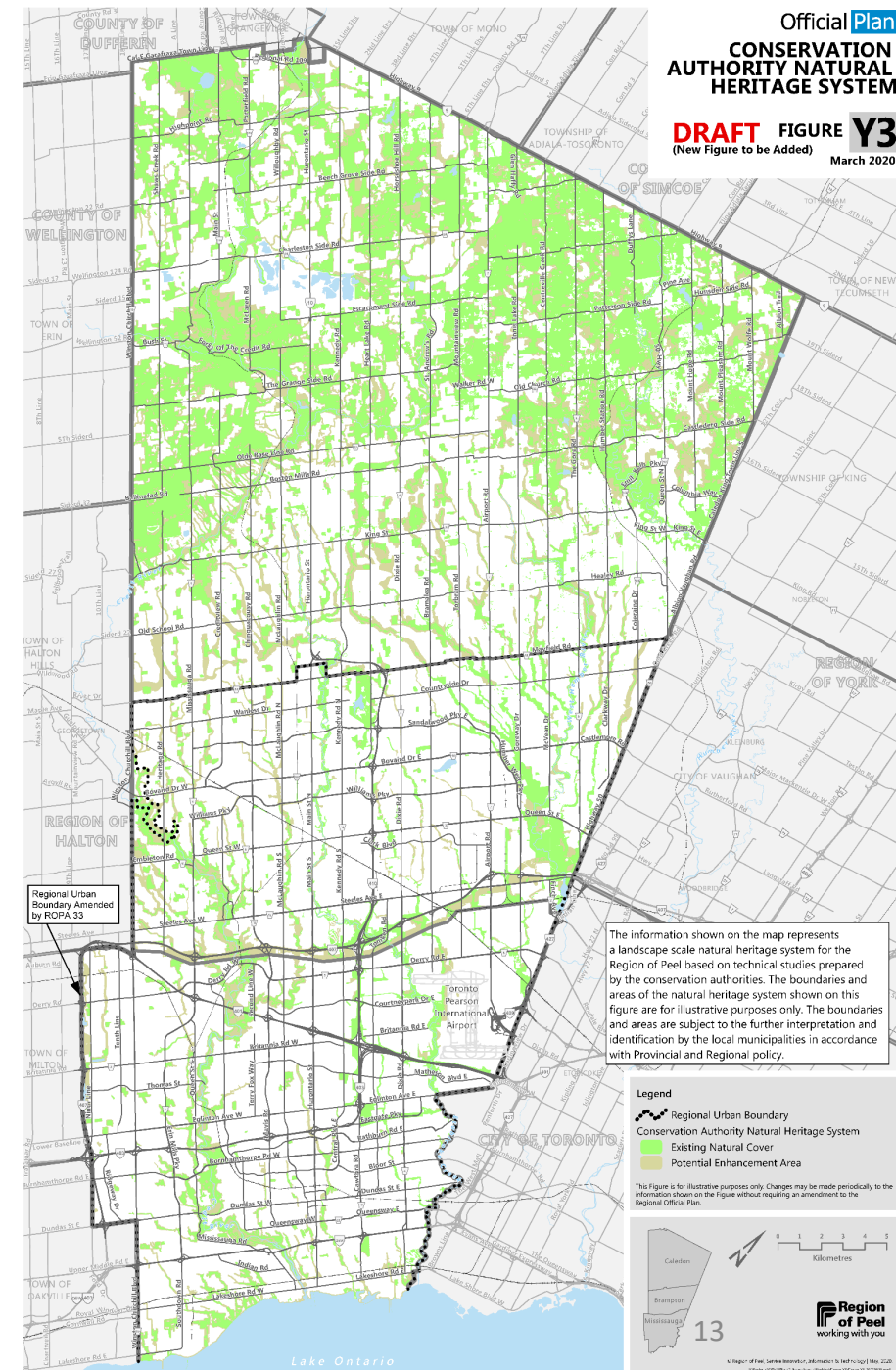
– Figure Y3

The Conservation Authority NHS:

- At regional scale, identifies lands in existing natural cover and lands with potential to be restored or enhanced
- Identification requires further refinement and implementation at local level
- Provides a science-based foundation for the implementation of natural heritage system planning in Peel by the local municipalities

“The Peel CA NHS is a landscape-level tool based on current science and is recommended for consideration and use by the Region and its partners for planning and programming purposes.”

CVC, Regional NHS Integration Project, December 2019



Official Plan
CONSERVATION
AUTHORITY NATURAL
HERITAGE SYSTEM
DRAFT FIGURE Y3
(New Figure to be Added)
March 2020

Legend

- Regional Urban Boundary
- Conservation Authority Natural Heritage System
- Existing Natural Cover
- Potential Enhancement Area

This figure is for illustrative purposes only. Changes may be made periodically to the information shown on the figure without requiring an amendment to the Regional Official Plan.

0 1 2 3 4 5
Kilometres

13

Region of Peel
working with you



Questions?

Contact info:
Learie Miller
Regional Planning and Growth Management Division
Learie.Miller@peelregion.ca