

# COVID-19 Update

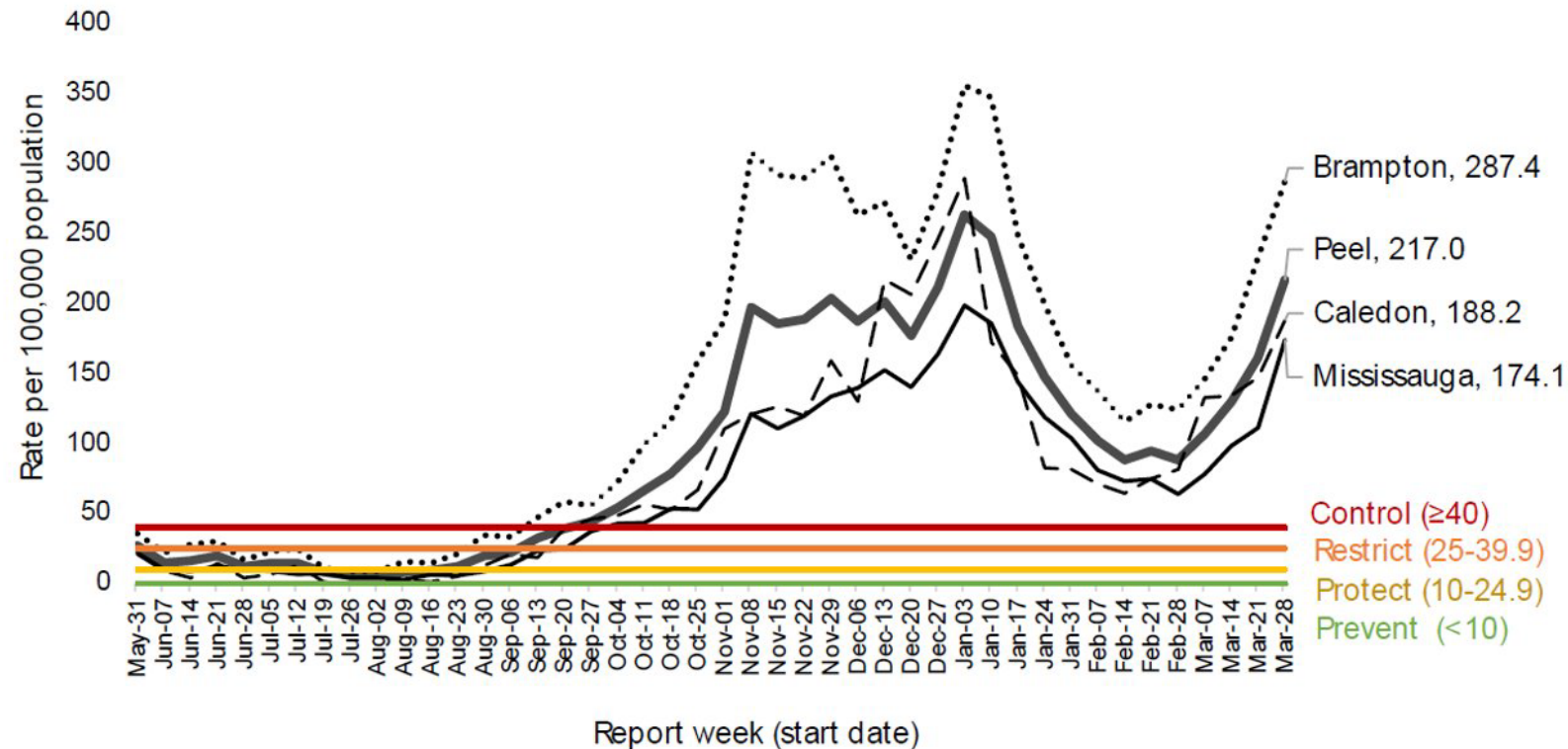
**Lawrence Loh, MD MPH FCFP FRCPC FACPM**  
**Medical Officer of Health, Region of Peel**  
April 8, 2021



# Agenda

- COVID-19 situation update
- Public health measures
- Community Mass Vaccination Plan updates

# Weekly COVID-19 Incidence Rates by Peel Municipality, May 31, 2020 to April 3, 2021



We are rapidly heading back to peak January levels

Our 7-day moving average of cases is **540** compared to 396 cases one week ago – A 35% increase

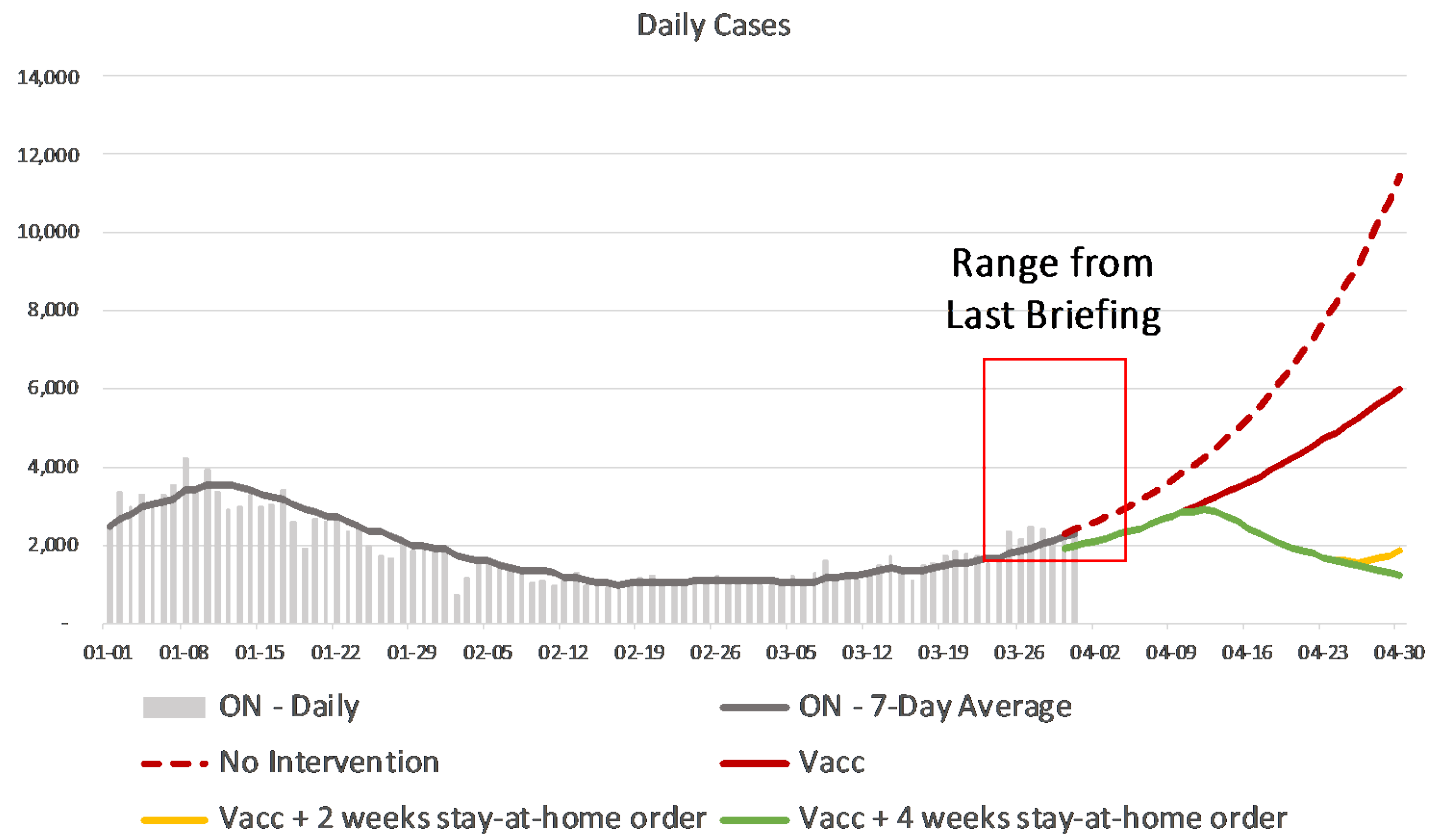
**Sources:** (Case data) Ministry of Health, Case and Contact Management Solution, extracted by Peel Public Health on [06/Apr/2021], (2019 municipality population estimates) Population Estimates, 2019, Statistics Canada. Ministry of Health, (2020 Peel population projection) Population Projections, 2020, Statistics Canada. IntelliHEALTH Ontario, Ministry of Health.

# Public Health Measures

- April 3 province-wide public health measures and the April 8 stay-at-home order are necessary
- It takes time to build immunity, therefore vaccination today will not prevent the current wave
- Stronger measures are required to reverse the surge in Peel
- The province has seen rapid case growth, largely due to variants of concern

# Short-term case projections depend entirely on system-level public health measures and vaccination

Figure shows example, representative of Ontario predictions across 4 models, 3-5 scenarios each



Source: Update on COVID-19 Projections, Science Advisory and Modelling Consensus Tables , April 1, 2021;  
Predictions informed by modeling from COVID-19 ModCollab, Fields Institute, McMasterU, PHO, YorkU;  
Data (Observed Cases): covid-19.ontario.ca 8.1-5

# Remote Learning for Peel Schools

- Strong public health measures implemented by schools have prevented significant spread of COVID-19 by students and staff
- Introduction of COVID-19 cases in schools is reflective of community transmission; there have been:
  - more outbreaks in school settings
  - more outbreak-related cases in recent weeks
- Public Health will continue to work with the boards to ensure a gradual return to in-person school

# Other Provincial Public Health Measures

Partially covered by April 8 Provincial measures:

- Review of all businesses and services presently defined as essential
- Capacity limits to businesses that remain open

Other supportive measures:

- Emergency provision of paid sick days
- Increased and more consistent vaccine supply
- Travel restrictions between regions

# Peel Community Mass Vaccination Plan Highlights

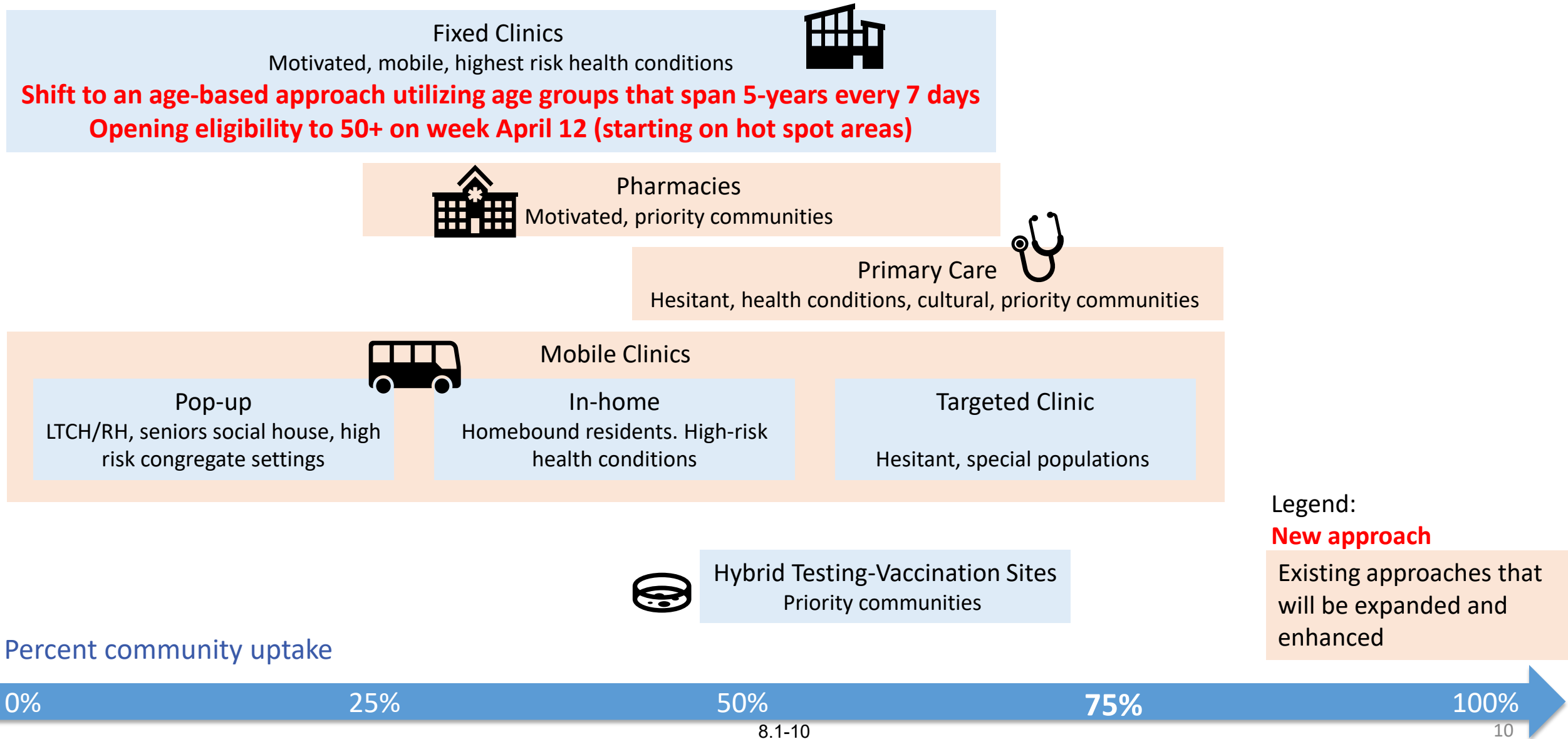
- **More than 200k** vaccine doses administered as of April 5th
- Built a **mobile clinic model** providing outreach to vulnerable residents, homebound persons, **110** congregate settings, and others
- Set up and opened **11** community clinics
- More than **80%** (1,200 of 1,600) clinic employees have been hired to date
- Over **600** physicians have expressed interest in vaccinating in fixed clinics
- **255** community volunteers have been trained – with over **4,000 hours** donated to date
- Provided **445** TransHelp rides to vaccination clinics
- Answered to over **5,000** calls per week and hundreds of community and stakeholder inquiries
- Completed a primary care pilot with **10 sites** to eligible patients for 60+, and continuing to expand



# Allocations and Capacity

Month	Anticipated Dose Allocation to Peel*	System Capacity
March	179,780 doses received	Ramp up from 3,400 to 9,000 doses per day per vaccine supply
April	289,440 (excludes AZ allocated to primary care & exclusive of pharmacy allocations)	Continue to grow capacity from 10,000 doses per day

# Multi-Pronged Approach to Vaccination



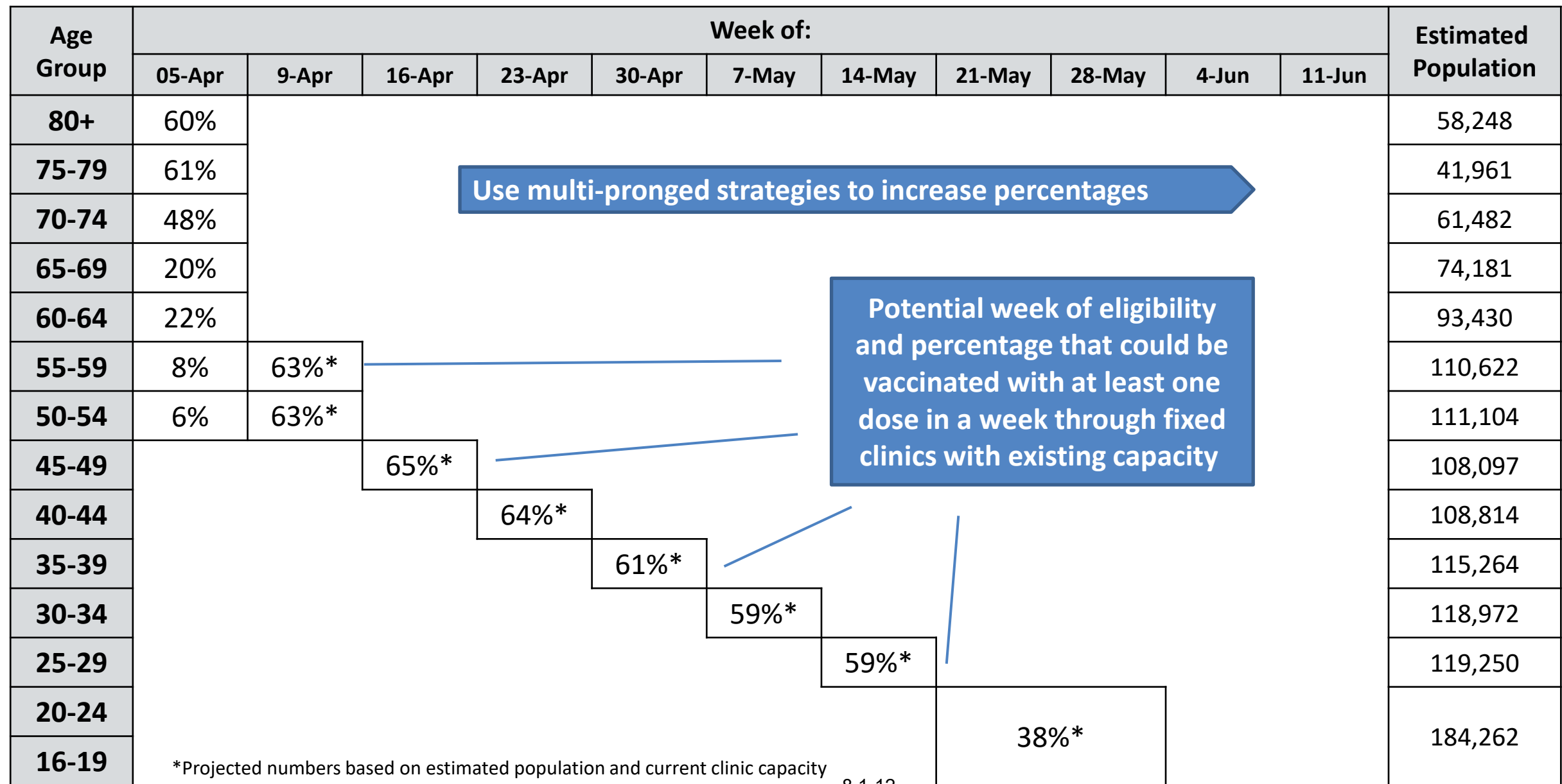
# Capacity by Clinic Type

- Fixed site clinics can vaccinate between 50 and 67 times faster than mobile clinics

Type of Clinic	Current Capacity/day	Full Capacity/day	Days Needed to Administer 100k doses
Fixed site clinics (Region and hospitals)	10,000 doses	20,000 doses	5 (full capacity) 10 (current capacity)
Mobile clinics	200 doses	300 doses	333 (full capacity) 500 (current capacity)

- Fixed site clinics use less than half the resources per dose
  - Fixed clinic: \$29/dose (estimate)
  - Mobile clinic: \$60-70/dose (estimate)
- Fixed site clinics
  - Are better suited for storage and mobility mRNA vaccine limitations
  - Are complemented with outreach, transportation support and accessibility

# Age-Based Approach to Achieve First Dose Coverage Faster



# Region of Peel Hot Spot Communities - COVID-19 Immunization Strategy

**Goal: Reaching people at higher risk of death, hospitalization and transmission**

Almost all of Peel's neighbourhoods are considered COVID-19 hotspots.

Peel has 25 "hot spot" FSAs with a total eligible population of 392,684 people (age 50-79)

Work together with our community to understand and meet the needs of people on their vaccination journey

---

Offer diverse vaccination options that are safe, convenient, and supportive to most residents

---

Meet our most vulnerable where they are through mobile clinics

---

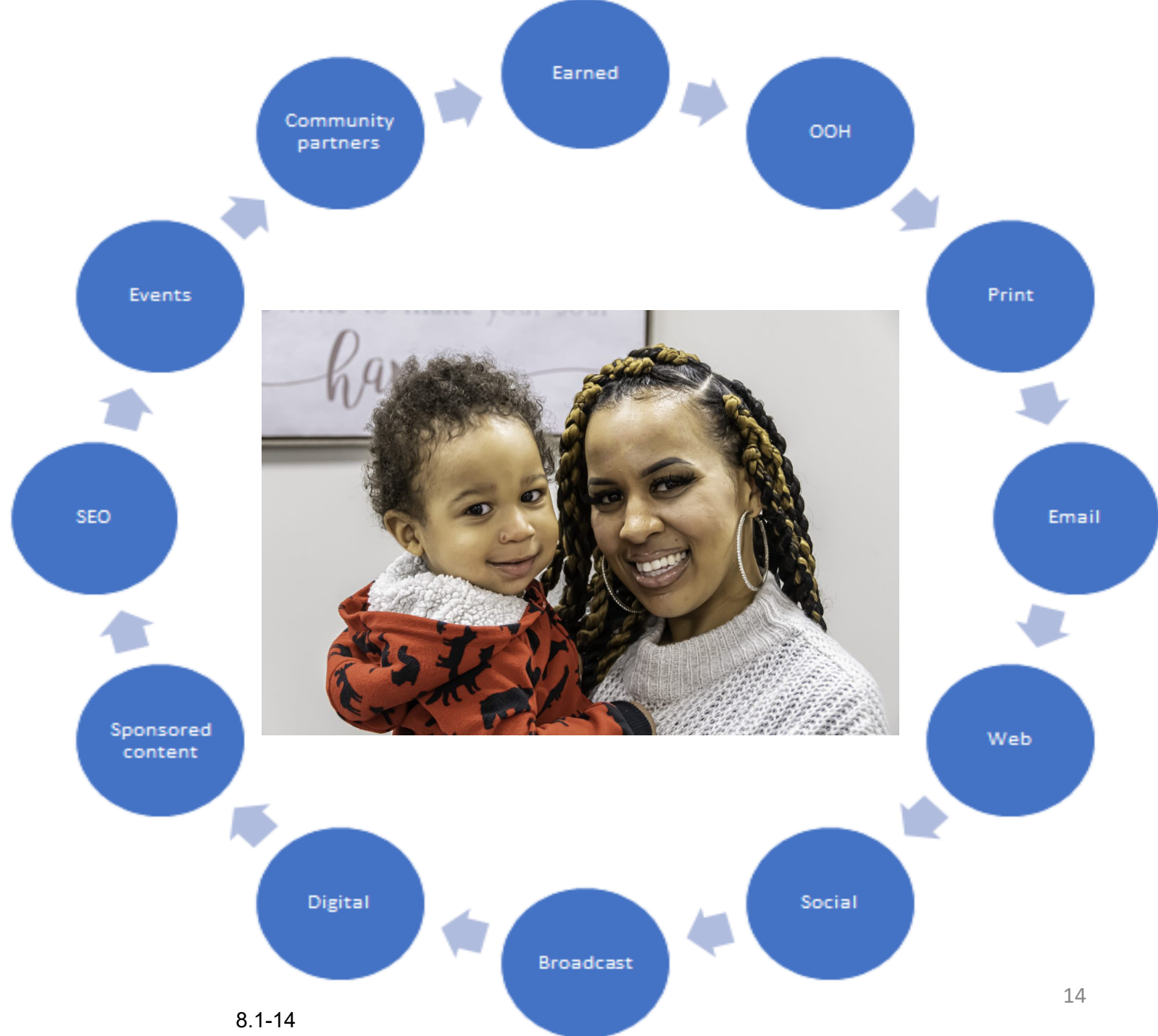
Provide the information people need, when and how they need it

---

Support a positive conversation and normalize vaccination

# Integrated Communications Approach

- Leverage the media habits, demographics and social values of people in Peel and keep residents at the heart of our communications.
- Our 360-degree integrated approach delivers a consistent and cohesive message across platforms.
- Ensures multiple touchpoints, higher rates of awareness, engagement and recall. Puts media in the preferred spaces of the resident.



# Challenges and Barriers

- Communications and issues management
  - Public confusion and mixed messaging related to eligibility
  - Comparisons with other jurisdictions
  - Vaccine confidence and 'shopping'
- Volatility of federal and provincial supply of vaccine
- Variable uptake
- Provincial COVax Vaccine Appointment Booking System (VAB)
  - Provincially controlled
  - Reporting & access to data
- Staffing, scheduling and team burnout
- Clinic operations processes and flow

# Immediate Priorities

- Monitoring COVID-19 situation and taking appropriate public health measures
- Continuing high-risk case contact case and outbreak management
- Opening vaccine to additional populations
- Negotiating stable supply and ability to manage provincial booking system
- Optimizing vaccine clinic operations
- Maximizing public communication efforts
- Continuing focus on the most vulnerable
- Managing burnout and balancing stretched resources across the response



Thank you

