

COVID-19 Update

Lawrence Loh, MD MPH FCFP FRCPC FACPM
Medical Officer of Health, Region of Peel
April 22, 2021



Agenda

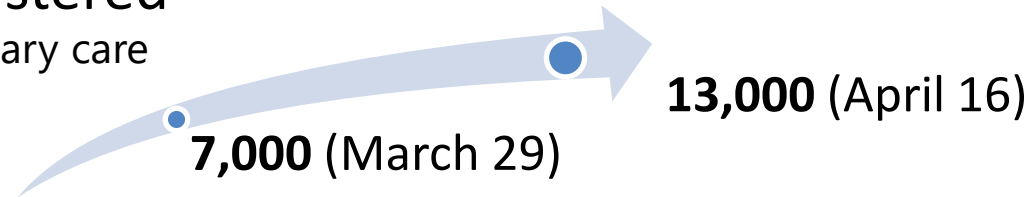
- Community Mass Vaccination Plan
- COVID-19 - Situation

Vaccination Milestones

- **400,000** doses administered in Peel as of today (both dose 1 and 2)

- Increased daily doses administered

Doesn't include pharmacies and primary care



- Improved capacity across the system

+350,000 doses administered through fixed clinics across the system (as of April 20)

16,979 doses through mobile clinics in congregate setting (e.g., LTCH and RH) (as of April 20)

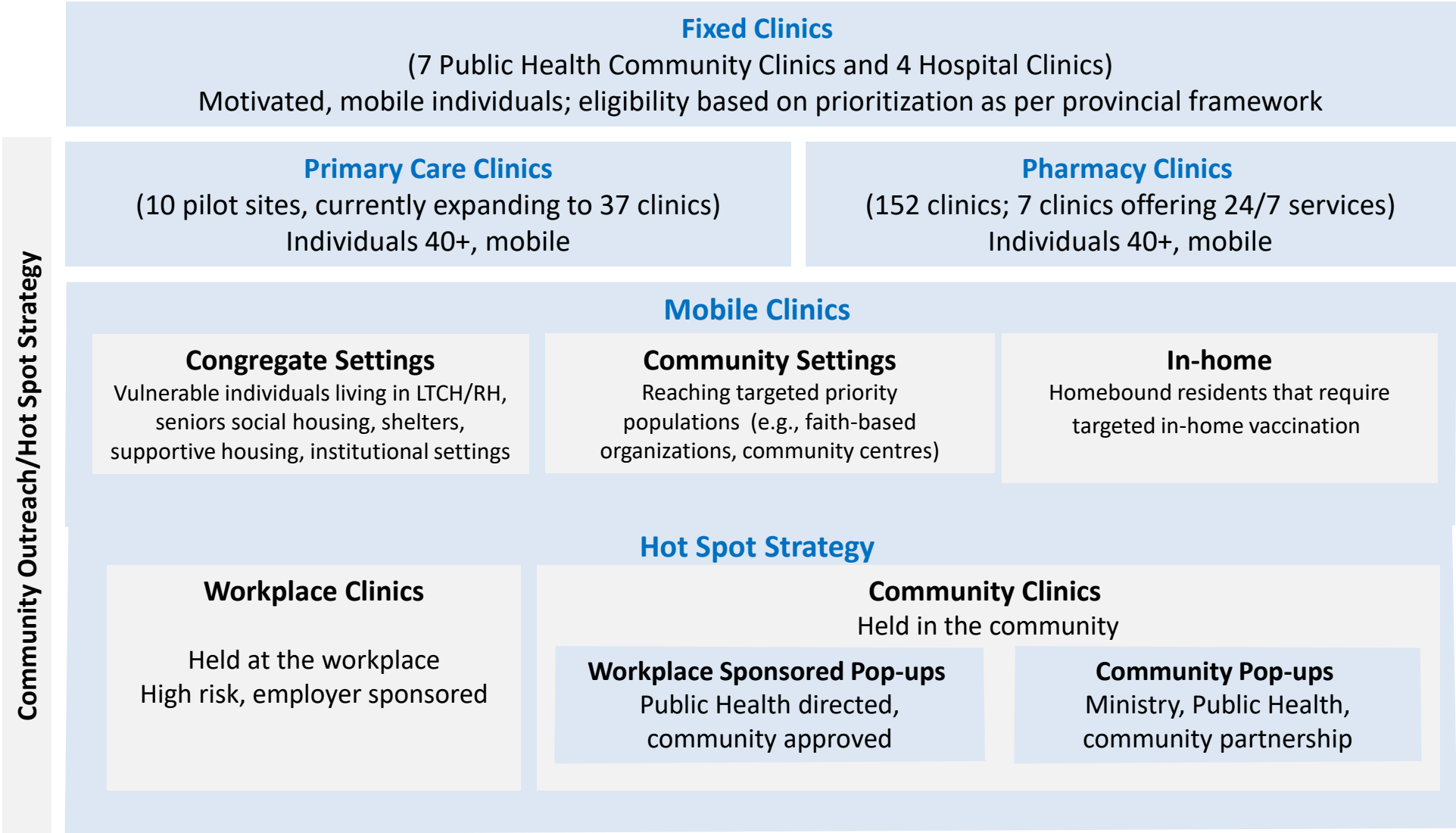
14,950 doses administered by pharmacists (as of April 20)

6,808 doses of AZ administered by primary care (as of April 20)

Approximately **3,000** homebound individuals in Peel have been referred

5 pop-up clinics planned with more under development

Systems Approach to Vaccination

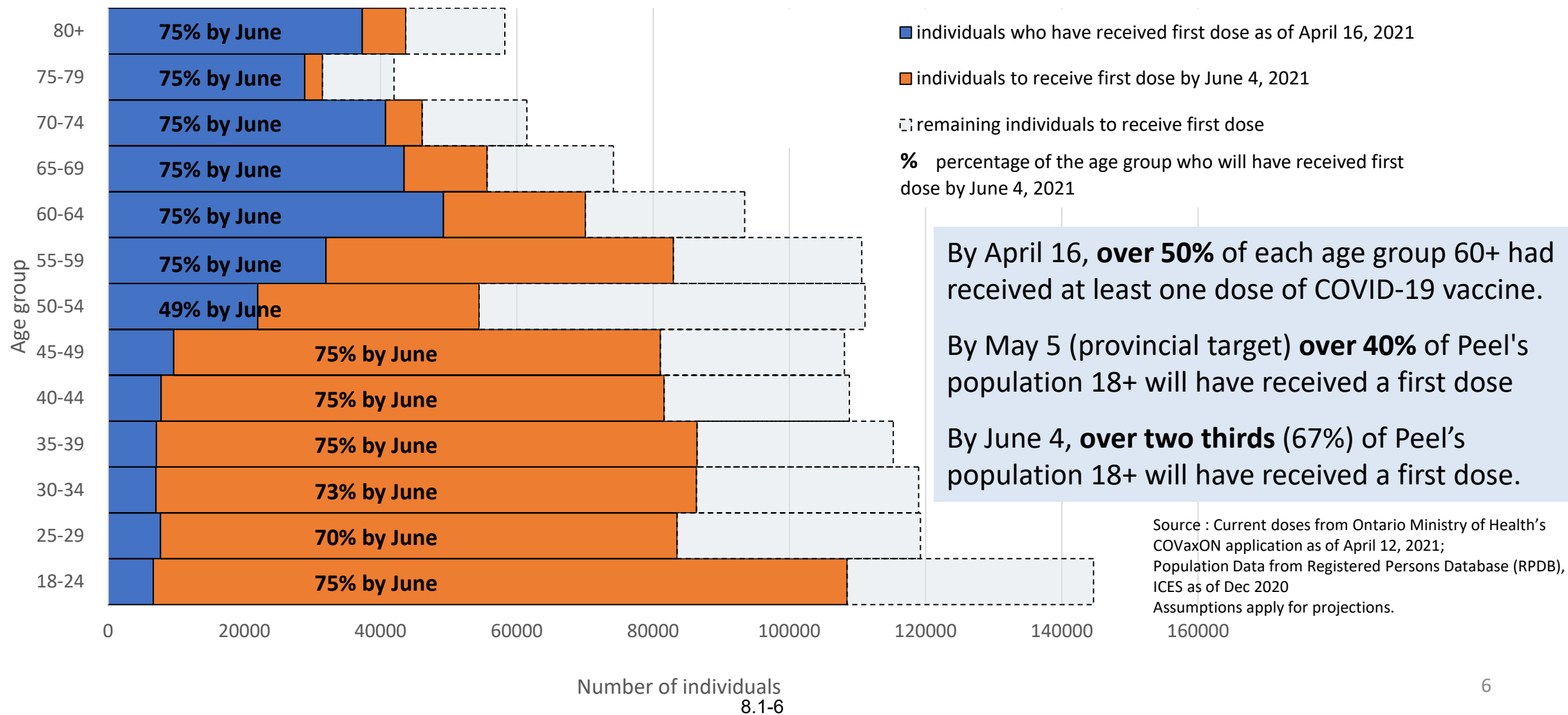


Targeted Clinics for Hot Spots

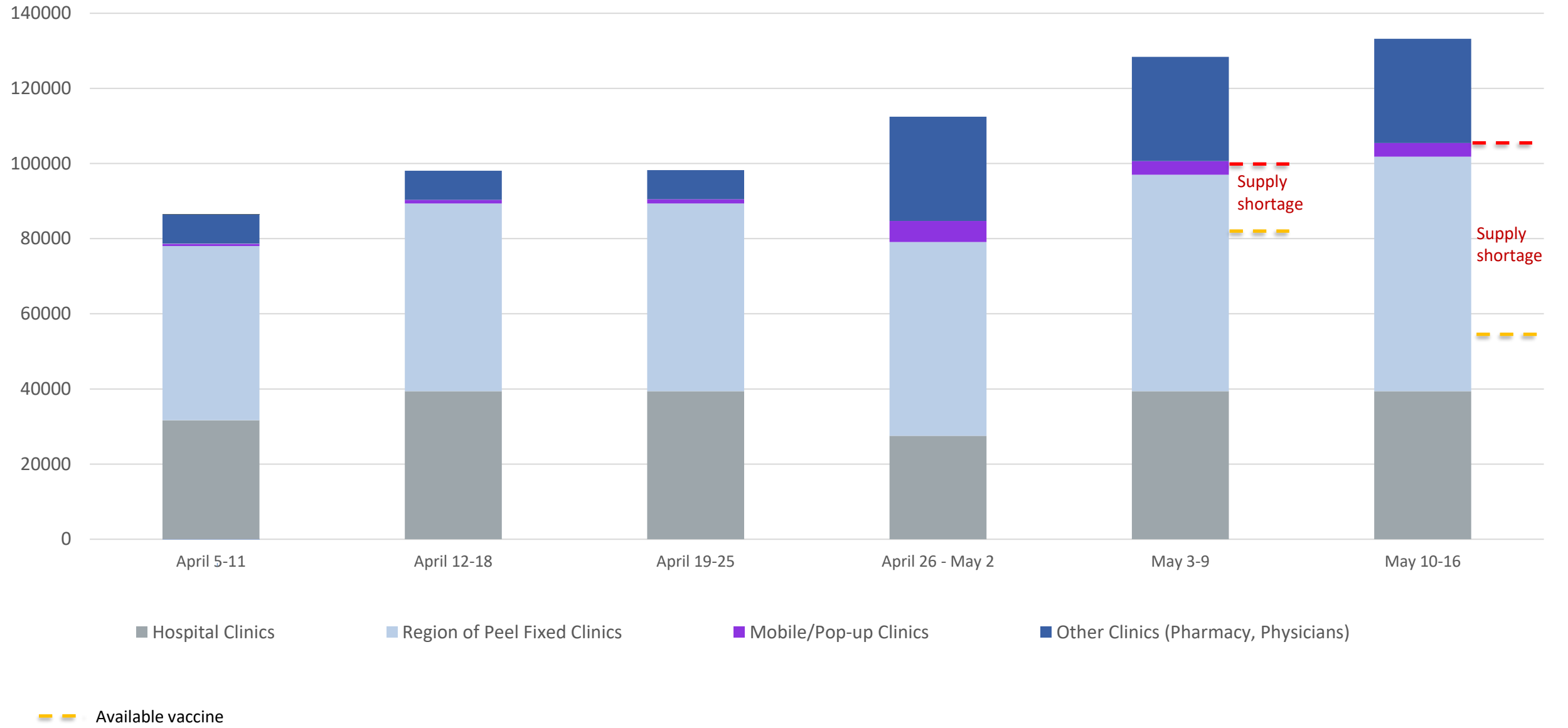
| Workplace Clinics | | |
|---|---|--|
| Employer led and ministry selected pilots planned with three major employers | | |
| Prioritization criteria for selection of pilot sites based on hot spot location, outbreak data, and willingness of employer to operate and fund onsite clinic for their staff and a separate clinic for the community | | |
| Community Clinics | | |
| Workplace Sponsored Pop-ups | Community Pop-ups | Mobile Clinics in Community Settings |
| Working with employers, the Province and community agencies | Working with the Province and community organizations to increase enhance access and uptake to vaccination | Working with community partners and leveraging local data to target priority populations |
| Active discussions, e.g., <ul style="list-style-type: none"> World Sikh Organization (Dixie Gurudwara) | Active community discussions, e.g., <ul style="list-style-type: none"> Canadian Muslim COVID-19 Task Force Roots Community Services | Site selection informed by outbreak and uptake data, hot spot FSAs, priority population groups and offers of support |
| <ul style="list-style-type: none"> Collaborating with over 150 organizations at over 20 community working tables Leveraging guidance and advice from our Community Equity and Engagement Advisory Table, representing community organizations/networks, primary care, mental health and addictions, acute care/hospital, and a bioethicist Supporting ambassadors and influencers within communities with accurate information and tools | | |

Projected First Dose Coverage by June

Current and projected vaccine status of Peel's population, by age group

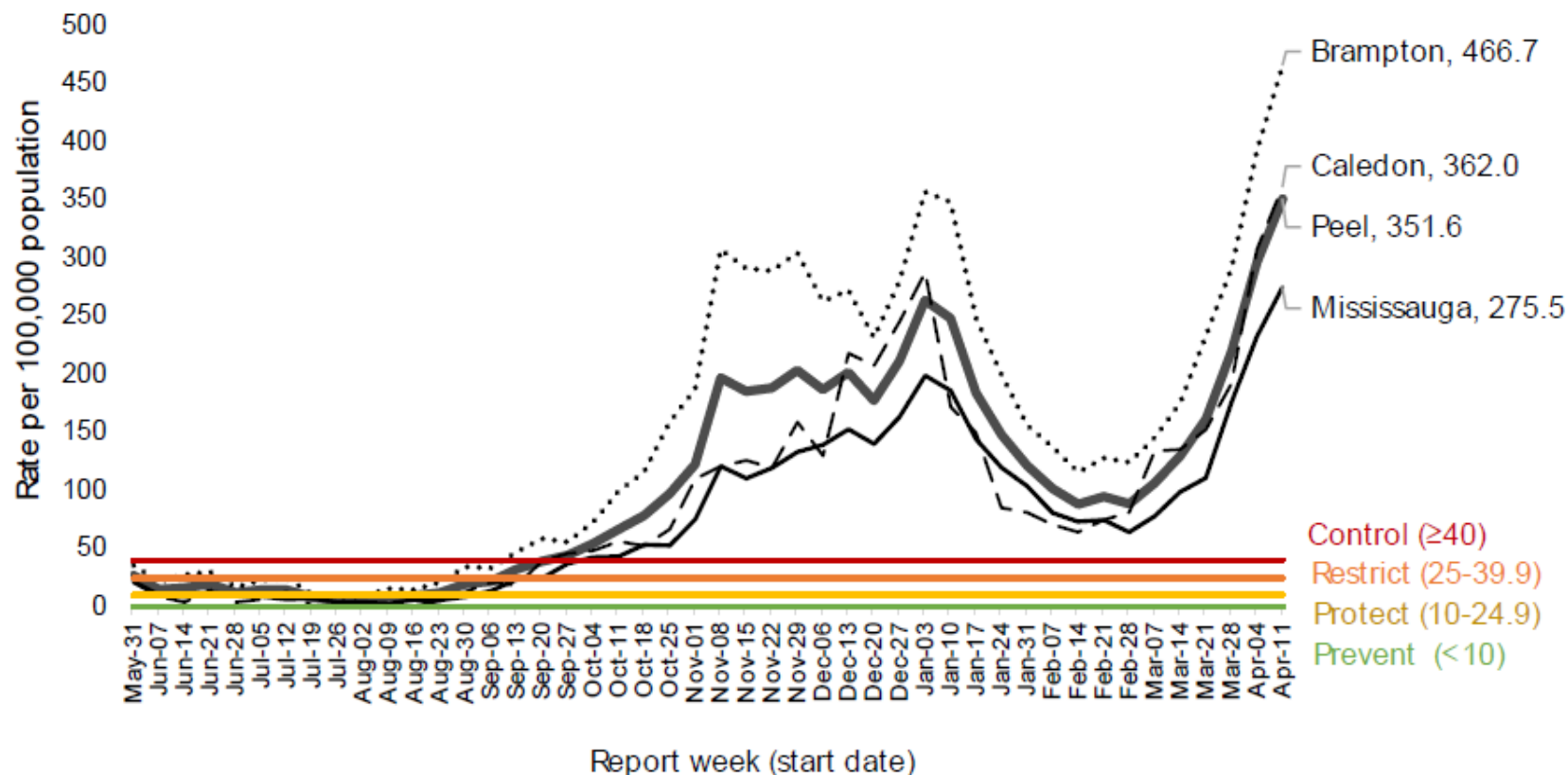


Weekly Dose Capacity and Vaccine Supply



COVID-19 Situation in Peel

Weekly COVID-19 incidence rates by Peel municipality: May 31, 2020 to April 17, 2021

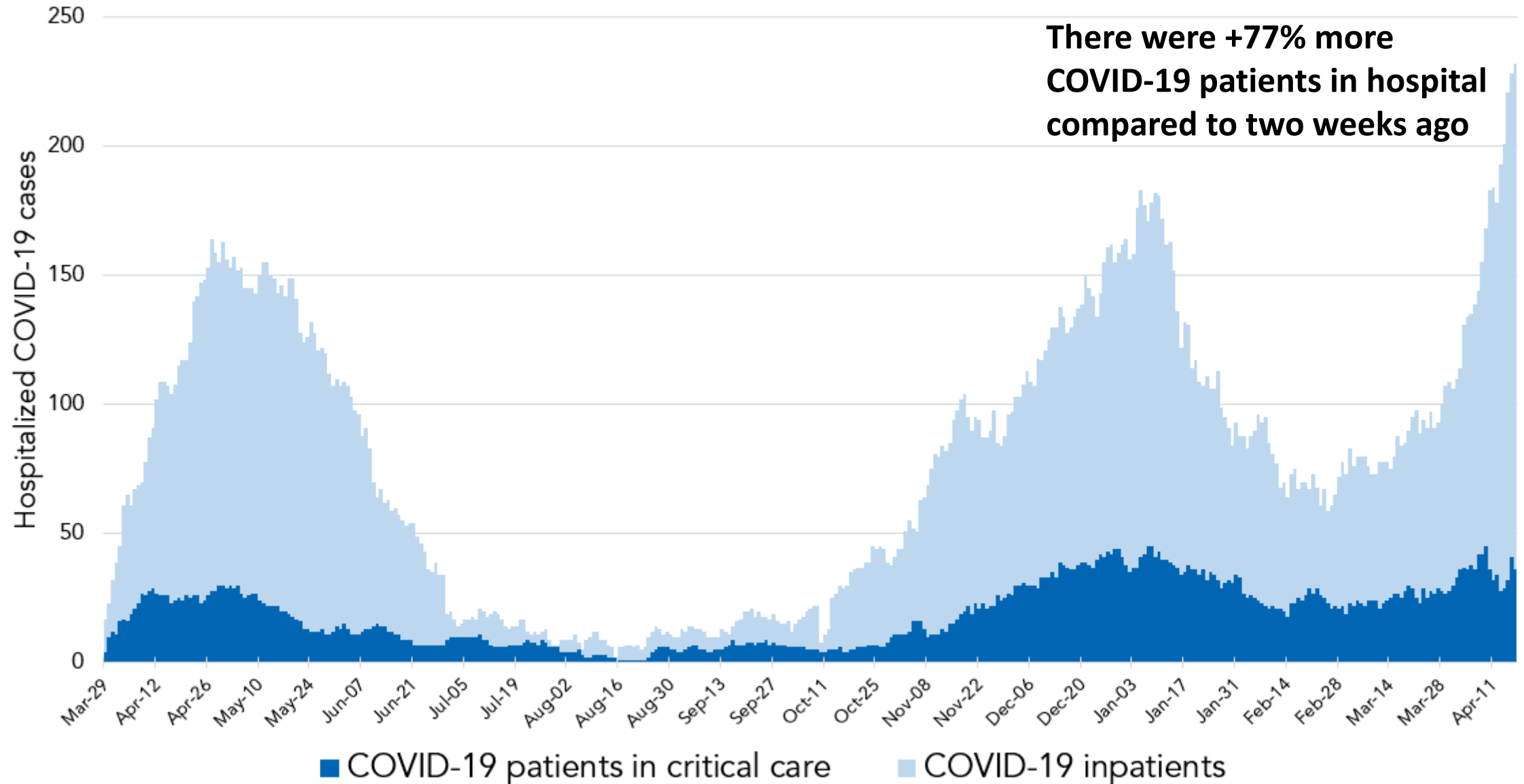


We have exceeded peak January levels

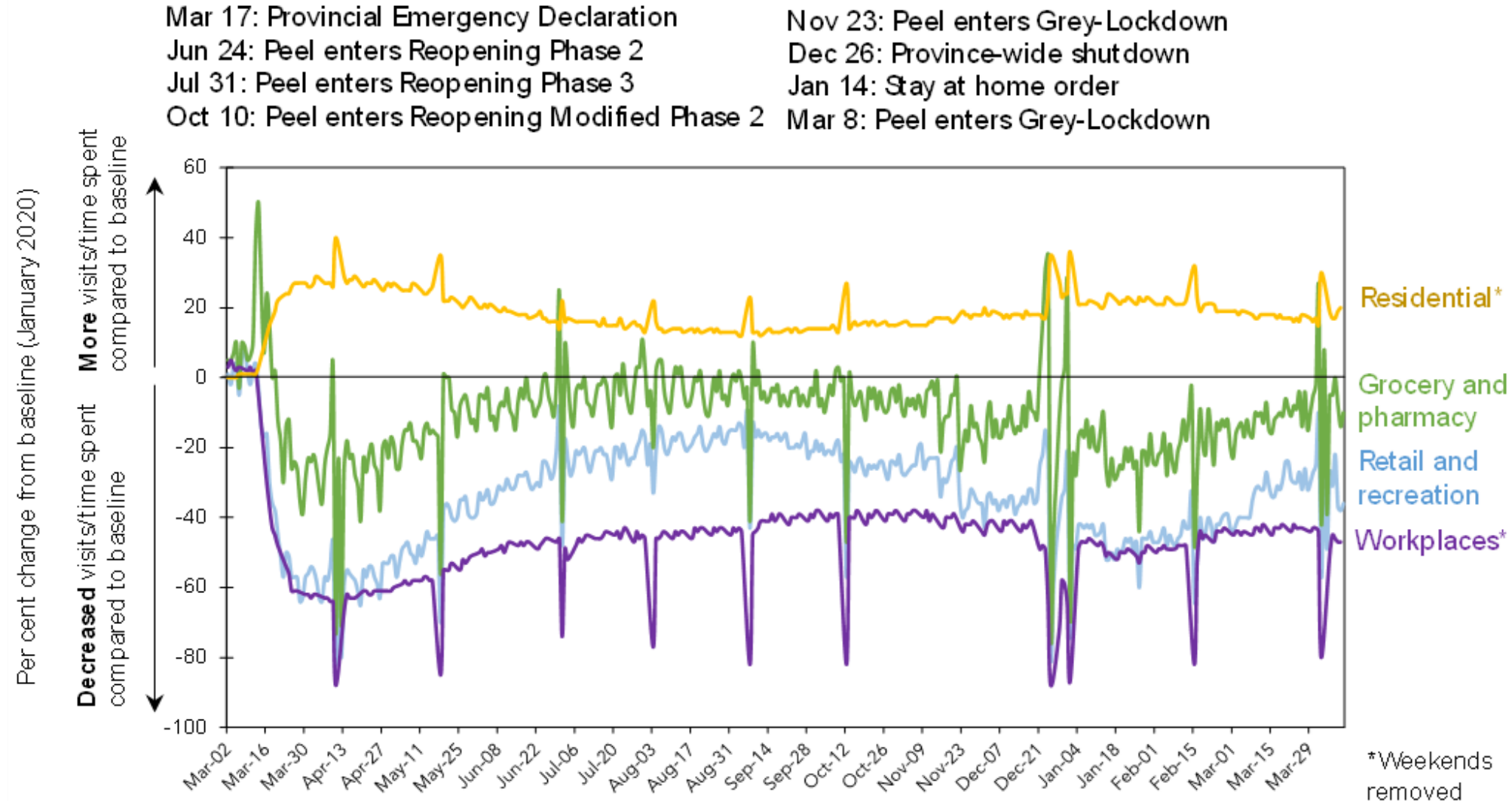
All age groups are at peak rates, except for 70-79 and 80+

Sources: (Case data) Ministry of Health, Case and Contact Management Solution, extracted by Peel Public Health on [20/Apr/2021], (2019 municipality population estimates) Population Estimates, 2019, Statistics Canada. Ministry of Health, (2020 Peel population projection) Population Projections, 2020, Statistics Canada. IntelliHEALTH Ontario, Ministry of Health.

High Numbers of COVID-19 Patients in Peel Hospitals



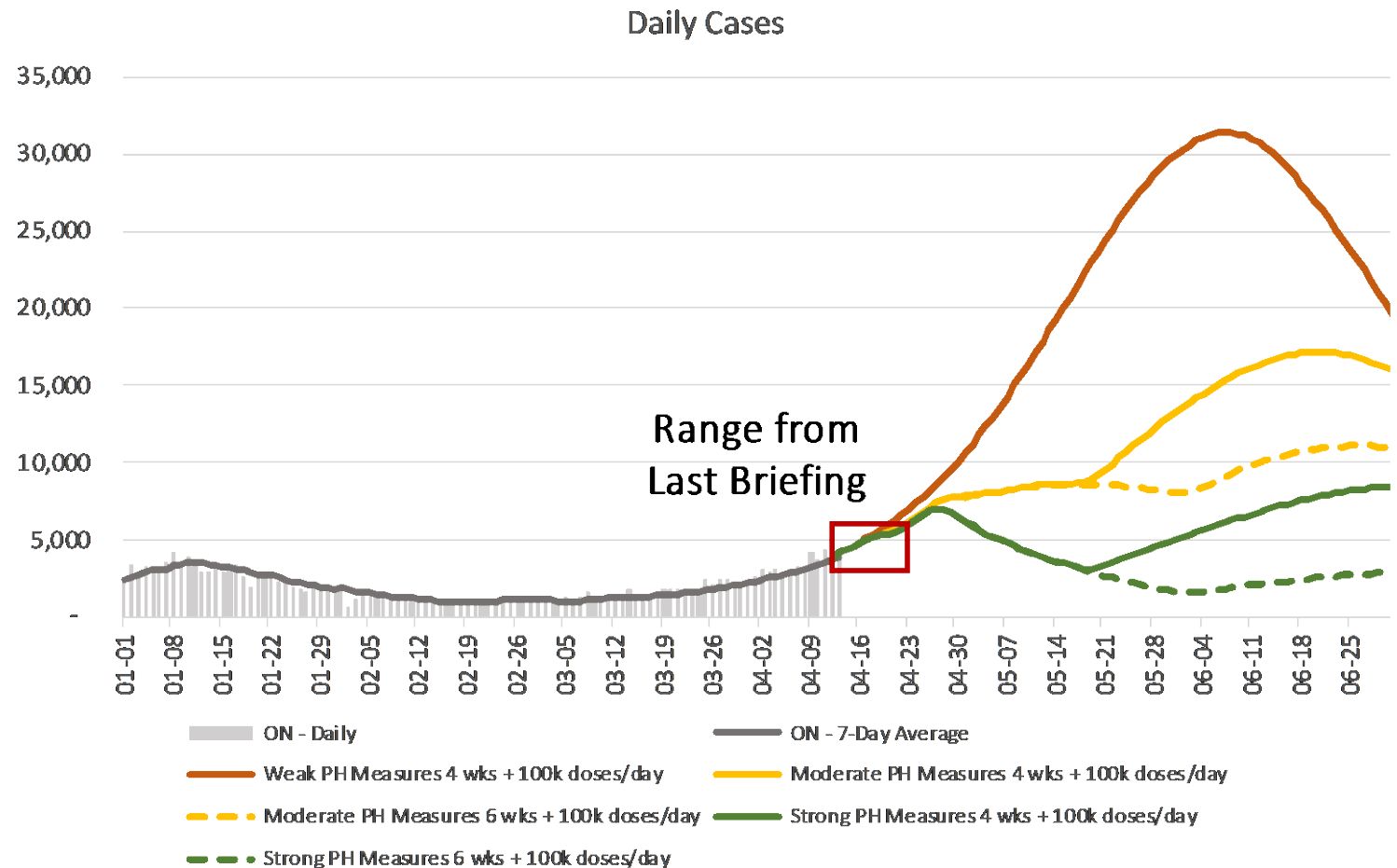
Mobility in Peel has Declined but not as Low as Wave 1



Strong Public Health Measures are Needed

Vaccination is the ultimate way out of the pandemic. But vaccination will not end the third wave.

A 6-week stay-at-home order with a vaccination rate of at least 100K doses per day is the only way to flatten the curve.



Public Health Measures are Needed

Provincially (April 8 and 17)

- Stay-at-home orders extended to 6 weeks
- Inter-provincial travel restrictions at land crossings
- Additional gathering and sector restrictions
- Remote learning for schools

In Peel

- Expedited Workplace Closures - Section 22 Order (April 20)
- Objective is suppression of transmission in a climate of high case volume/low capacity
- Five cases in 14 days:
 - Reasonably acquired their infection at work, OR
 - With no obvious source of infection outside of the workplace. } 10 day dismissals (self-isolation)
- Public list of workplaces closed and closure date (removal after 10 days)
- Exceptions for businesses essential to the well-being of our community; critical infrastructure and also at Public Health discretion based on investigation

Case, Contact and Outbreak Management

- Case and contact and outbreak management remain important
 - Challenged by record number of cases and limited resources
- **High-risk case and contact management** already in place
- Further adjustments this week include:
 - Launched a **Virtual Assistant (VA)** tool to send timely text messages to cases
 - Established **Initial Calls Team (ICT)** for cases who cannot be sent a text
- Capacity could be further compromised if cases continue to increase

Challenges and Priorities

- Peel Needs Stable and Sufficient Vaccine Supply
- All of Peel should be a hot spot
- Local control of booking system is important
- Increased cases further challenge our response capacity
 - e.g., case, contact and outbreak management
- Public frustration and confusion requires effort and attention



Thank you

