

# COVID-19 Update

**Lawrence Loh, MD MPH FCFP FRCPC FACPM**  
**Medical Officer of Health, Region of Peel**  
June 10, 2021



# Agenda

- Overview and Milestones
- Update on COVID-19 situation
- Vaccination strategy
- Priorities moving forward

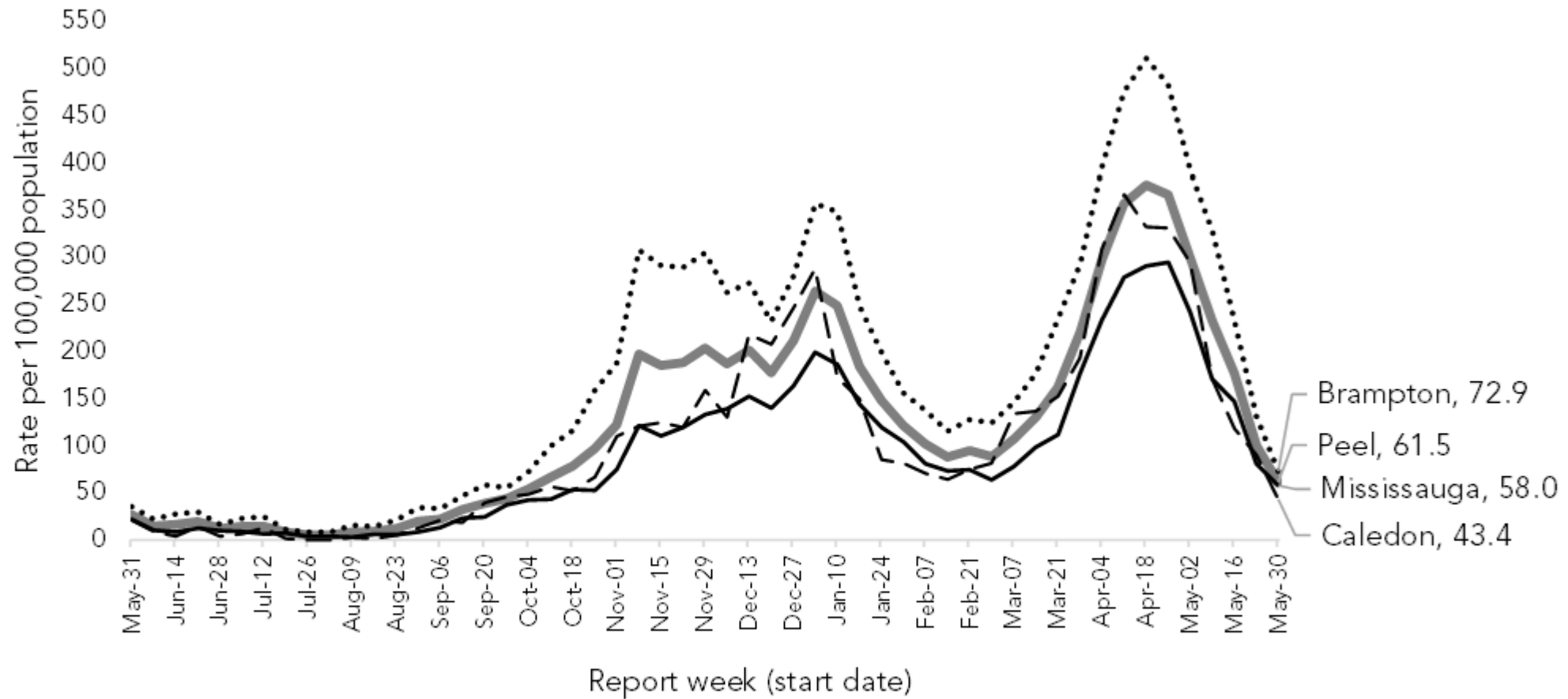


# Overview & Milestones





# Declining COVID-19 incidence rates across Peel



**Sources:** (Case data) Ministry of Health, Case and Contact Management Solution, extracted by Peel Public Health on [08/Jun/2021], (2019 municipality population estimates) Population Estimates, 2019, Statistics Canada. Ministry of Health, (2020 Peel population projection) Population Projections, 2020, Statistics Canada. IntelliHEALTH Ontario, Ministry of Health.

# Emerging Variants of Concern

	Nomenclature	Transmissibility	Immune Escape	Vaccine Effectiveness
Early variant		--		Yes
B.1.1.7	Alpha	+++	--	Yes
B.1.351	Beta	+	++++	Yes
P.1	Gamma	++	++	Yes
B.1.617.2	Delta	++++	++++	Yes

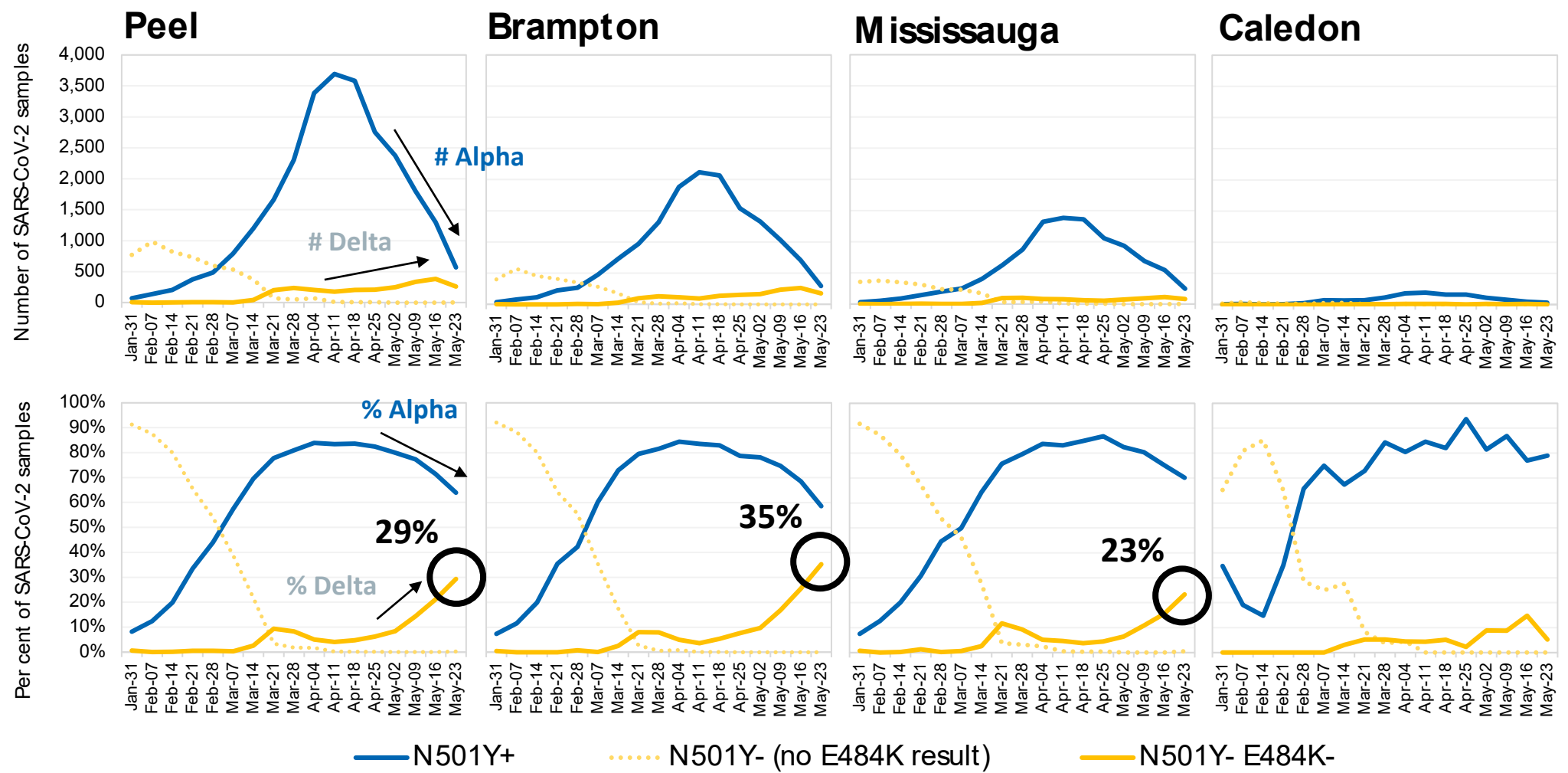
Delta:

40-50% more transmissible than Alpha

1 dose of mRNA vaccine/Astra Zeneca is ~33% effective; 2 doses are required

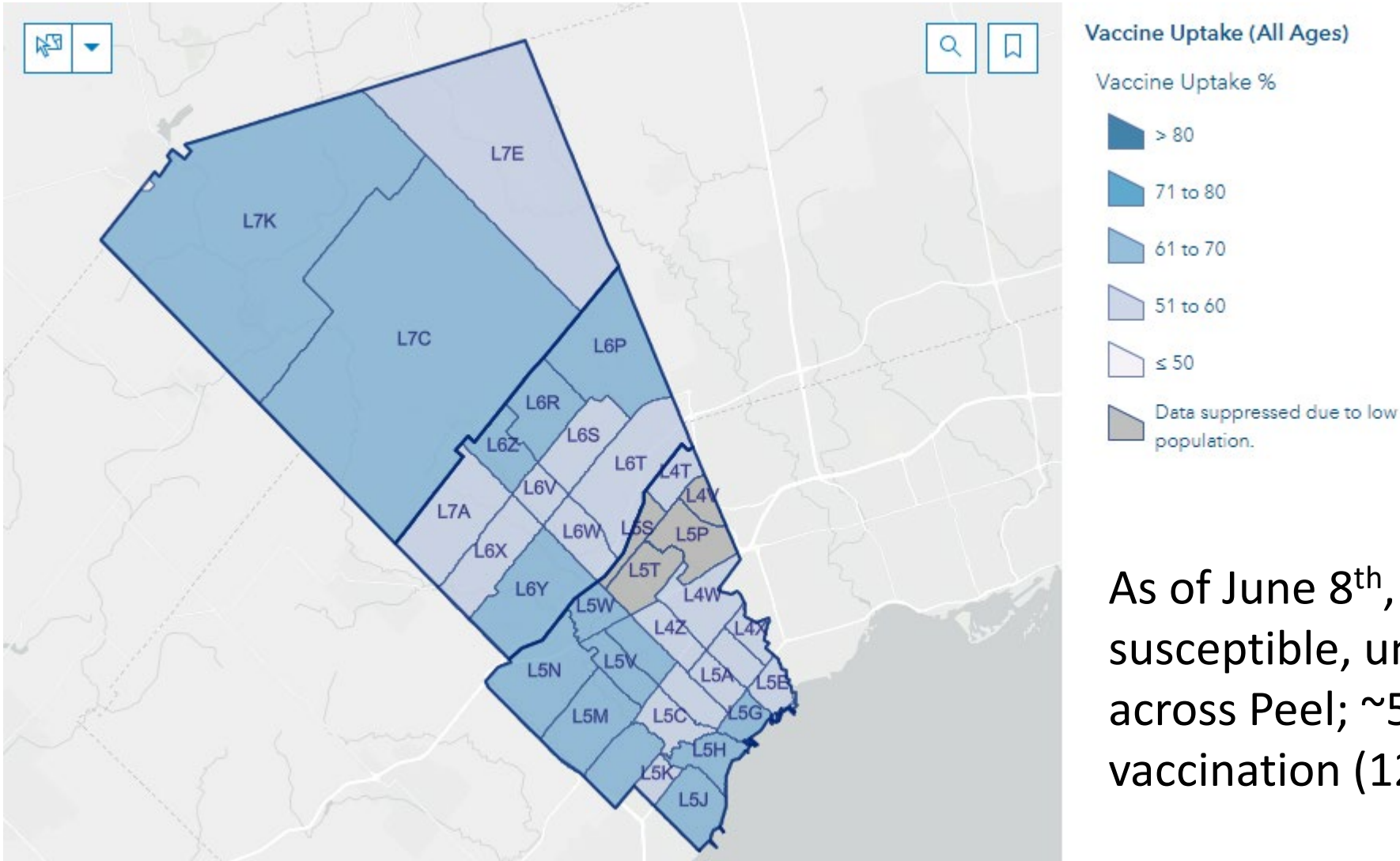


# The number and proportion of weekly SARS-CoV-2 specimens that are presumed Delta variants have been increasing in Peel



Note: Data for week of May 23, 2021 are preliminary. Routine N501Y screening began Feb 3, 2021 and dual screening for N501Y and E484K began Mar 22, 2021.  
Source: Ministry of Health, Ontario Laboratory Information System, extracted by Peel Public Health [02/Jun/2021].

# High priority areas in Peel for vaccination



As of June 8<sup>th</sup>, there remain 599K susceptible, unimmunized people across Peel; ~50% are eligible for vaccination (12+)

# Provincial Reopening: June 11 Step 1

- Province-wide three-step plan to gradually reopen
- In addition to outdoor activities, limited indoor settings are permitted to open in Step 1:
  - Indoor religious services, rites, or ceremonies, including wedding services and funeral services at 15% capacity of the room;
  - Non-essential retail at 15% capacity;
  - Essential and other select retail at 25% capacity, with no restrictions on the goods that can be sold

Vaccination rate  
plus key health indicators <sup>[1]</sup>

Step 1

**60%**

Adults with one dose

Vaccination rate  
plus key health indicators <sup>[1]</sup>

Step 2

**70%**

Adults with one dose  
20% Fully vaccinated

Vaccination rate  
plus key health indicators <sup>[1]</sup>

Step 3

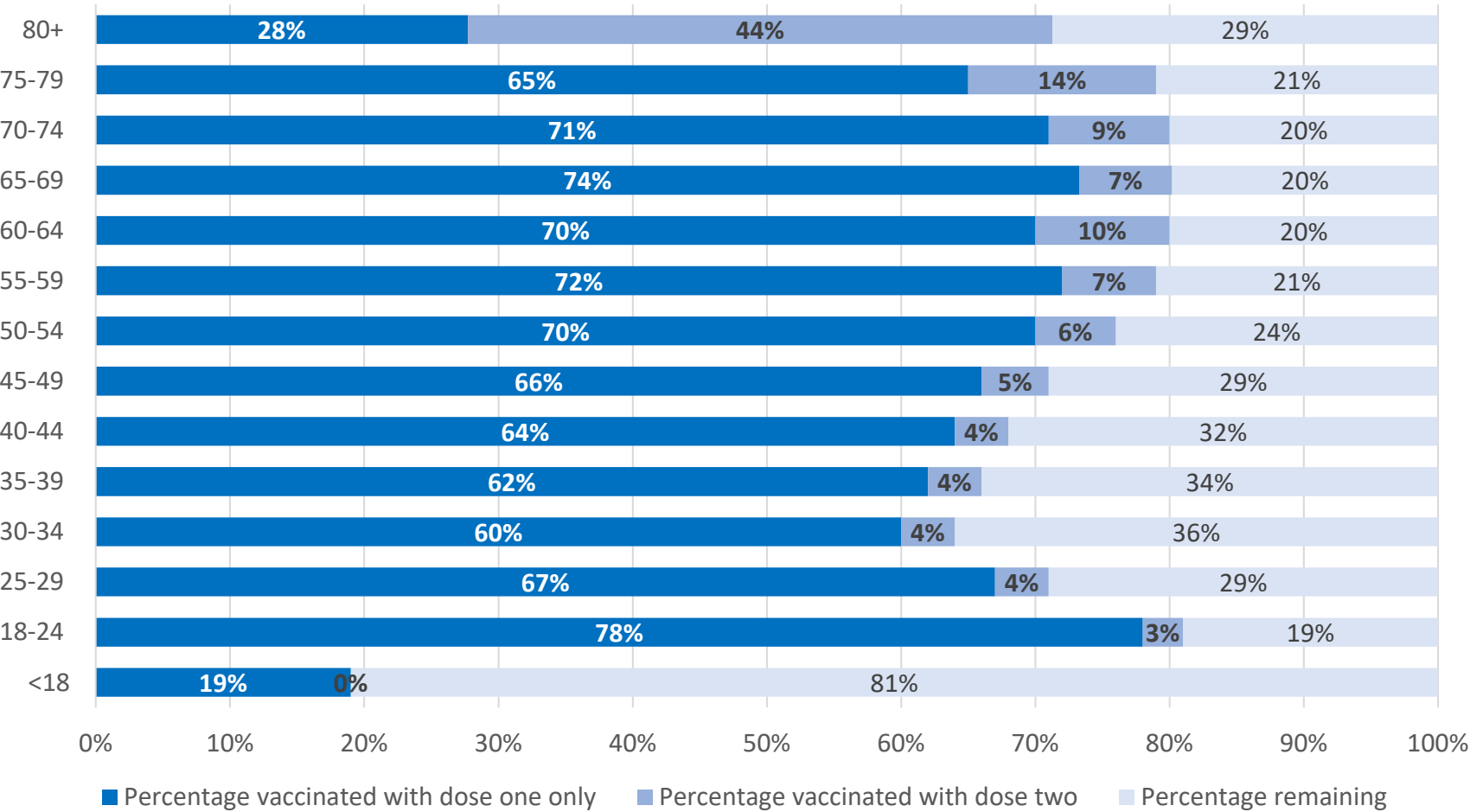
**70-80%**

Adults with one dose  
25% Fully vaccinated



# Vaccine Coverage

Percent of Peel residents who have received dose one only and dose two of COVID-19 vaccine as of June 8, 2021 at 12pm

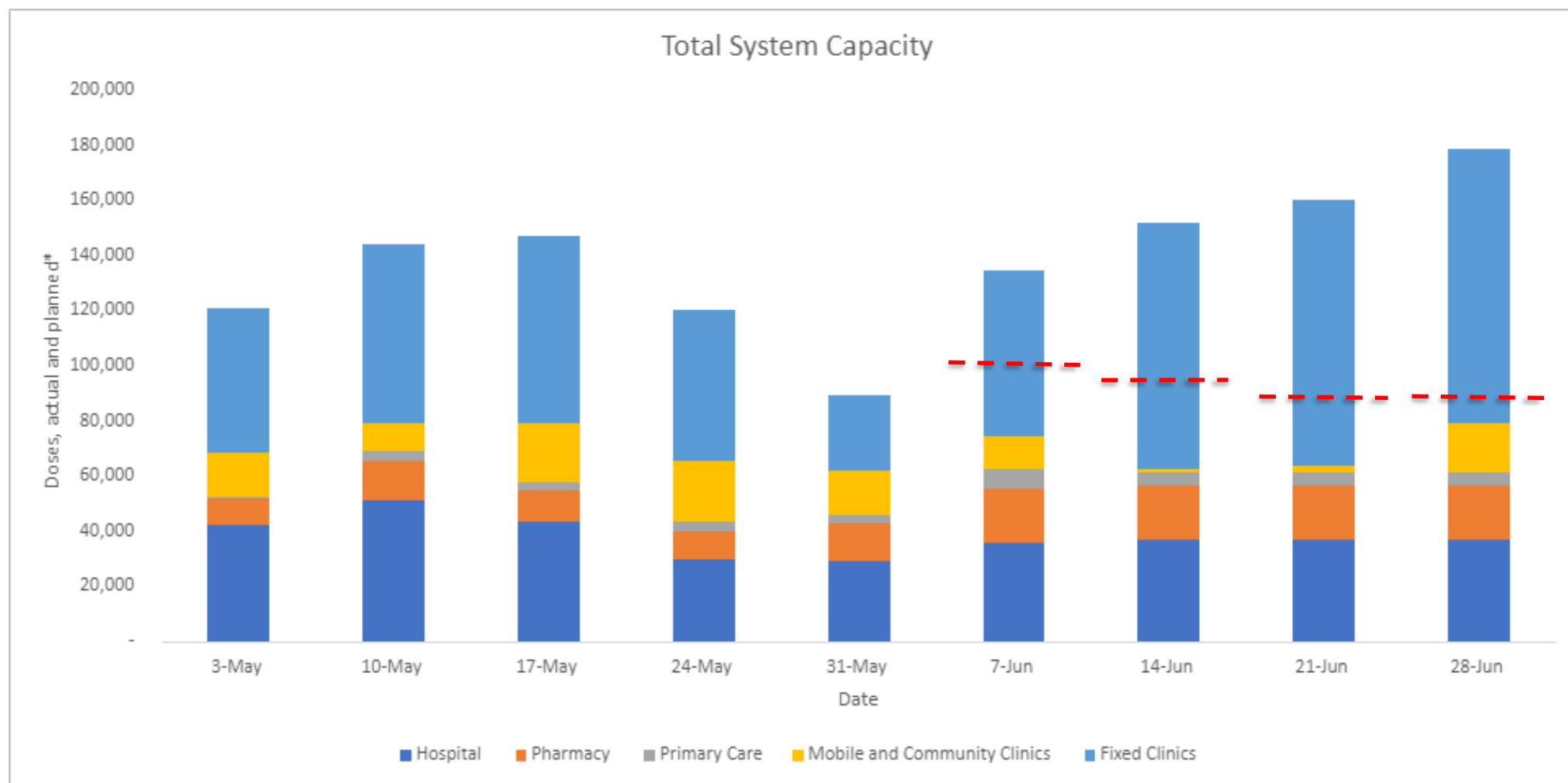


62% of total population  
(74% of the 18+  
population) have received  
at least 1 dose of vaccine

6% of total population (7%  
of the 18+ population)  
have received two doses  
of vaccine

44% of the population 80+  
have received two doses  
of vaccine

# Peel's Vaccination Journey



\*Actual doses administered May 3 – June 6. Planned doses June 7 onward. 9.1-10

# Second Doses



**First dose:  
AstraZeneca**

**OPTION 1:** Receive AstraZeneca vaccine for second dose, 12 weeks after first dose.

[COVID-19 pharmacy vaccine locations \(ontario.ca\)](#)  
[Primary care providers offering vaccine appointments - Region of Peel \(peelregion.ca\)](#)

**OPTION 2:** Receive an mRNA vaccine (Pfizer or Moderna) for second dose, 12 weeks after first dose.

**Eligibility:**

- Received first dose 12 weeks ago or longer



**First dose:  
Pfizer or Moderna**

**Recommendation to receive same vaccine for second dose, at least 28 days after first dose.**

If original vaccine is not available, may interchange between Pfizer or Moderna.

**Eligibility:**

- Ages 12-17 and 70+
- Select health conditions
- Select high-risk healthcare workers
- Residents of congregate settings for seniors
- Received first dose on or before April 18

# An Equity Approach

- Efforts focused on maintaining equity and reaching the “moveable middle” – those residents who are not yet ready to vaccinate but who may be motivated to do so with appropriate supports.
- Examples of tactics used to date:
  - Targeted clinics with enhanced community outreach and engagement – creating safe, convenient and familiar environments
  - Free, supportive transportation using both TransHelp and Uber services
  - Educational town halls and interactive forums to encourage dialogue; facilitated and supported by trusted leaders.
  - Door to door canvassing and supportive outreach by Community Ambassadors to share information and improve confidence



# Priorities

- Accelerate second doses
- Continued outreach to increase first dose coverage
  - Increase focus on those with barriers to access and low vaccine confidence
- Ongoing monitoring and public health measures to support safe reopening



Thank you

