

# COVID-19 Update

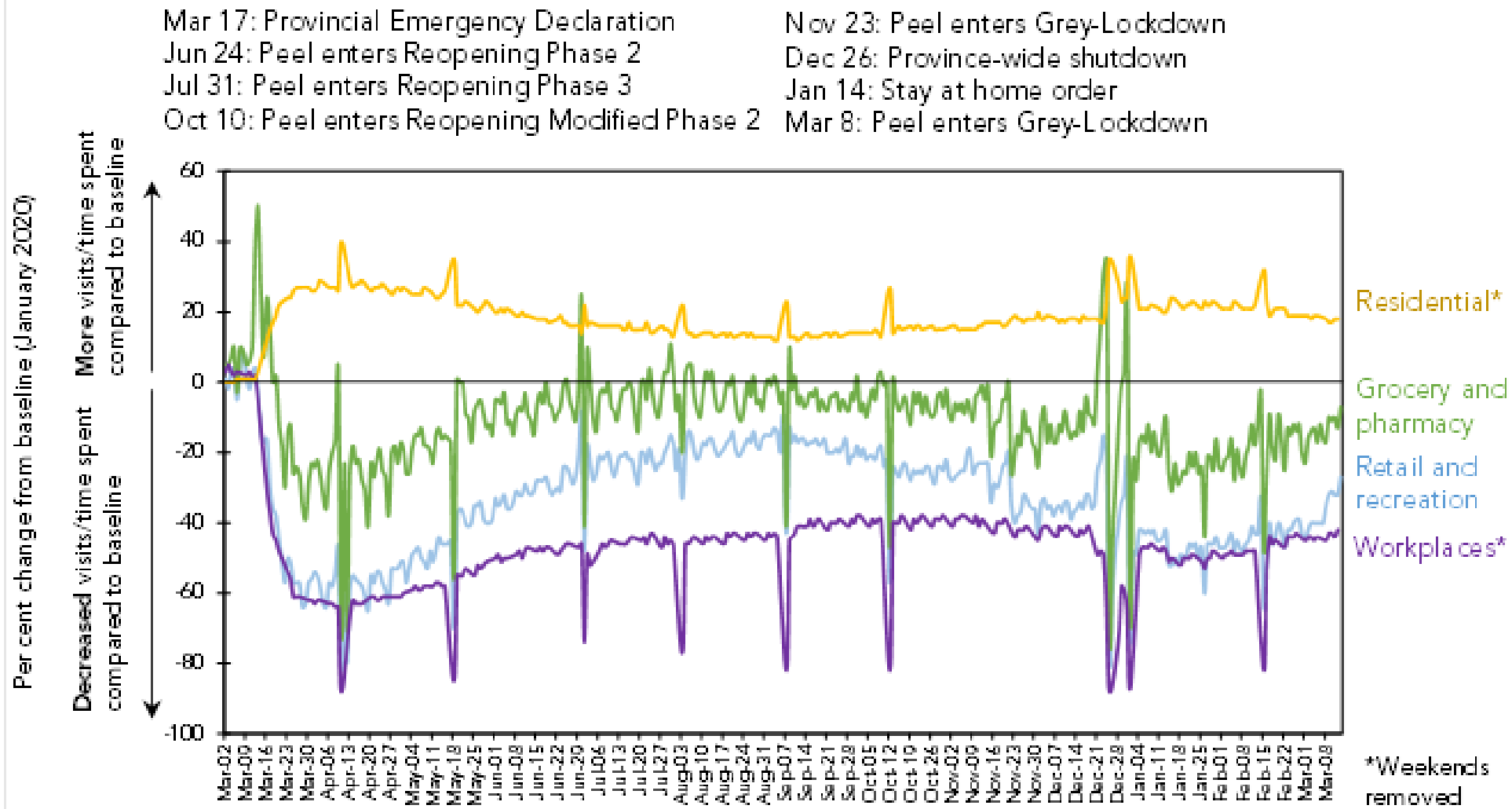
**Lawrence Loh, MD MPH FCFP FRCPC FACPM**  
**Medical Officer of Health, Region of Peel**  
March 25, 2021



# Agenda

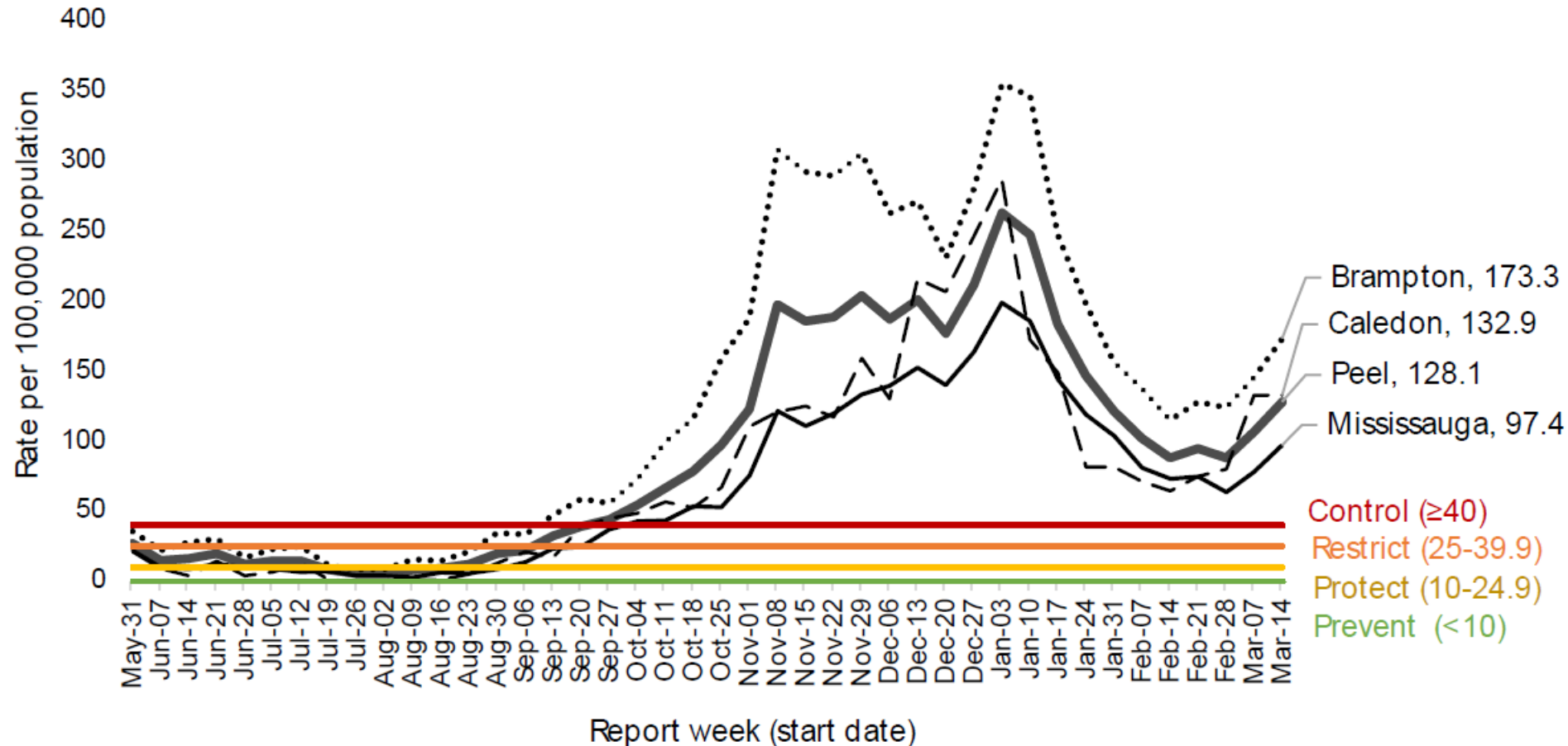
- COVID-19 situation update
- Provincial response framework
- Community Mass Vaccination Plan update

# COVID-19 Public Health Measures and Mobility



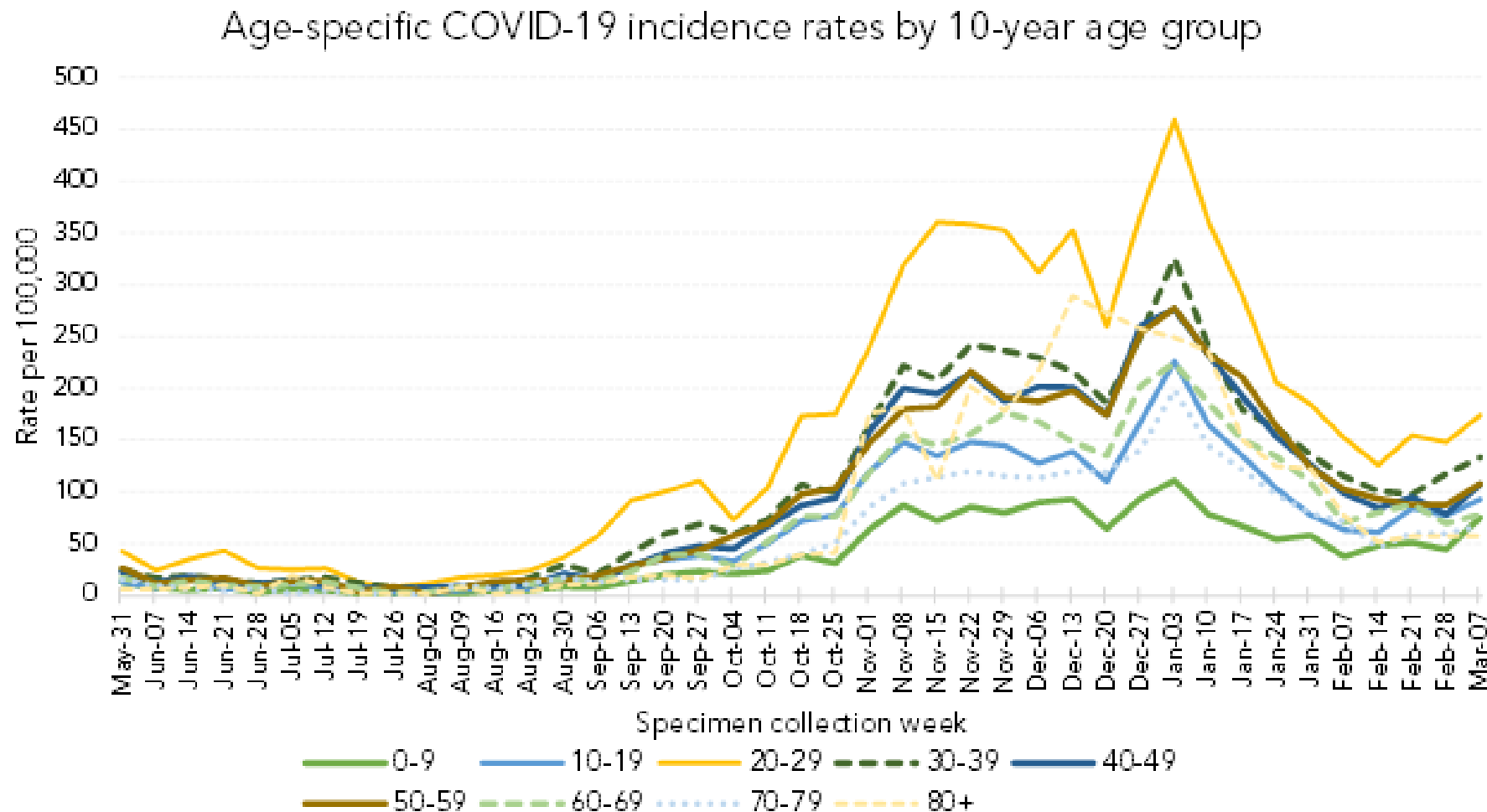
Mobility has increased with Peel's entry into the Grey Zone of the provincial framework on March 8, 2020

# Peel COVID-19 Incidence Rates (cases per 100,000)



**Sources:** (Case data) Ministry of Health, Case and Contact Management Solution, extracted by Peel Public Health on [23/Mar/2021], (2019 municipality population estimates) Population Estimates, 2019, Statistics Canada. Ministry of Health, (2020 Peel population projection) Population Projections, 2020, Statistics Canada. IntelliHEALTH Ontario, Ministry of Health.

# Peel COVID-19 Age-Specific Incidence Rates



Increase is seen  
across most  
age groups

Sources: Ontario Ministry of Health, Public Health Case and Contact Management Solution (CCM), extracted by Peel Public Health [18/Mar/2021] at 1:00 pm; Population Projections, 2017-2041, Ontario Ministry of Finance, IntelliHEALTH Ontario, Ministry of Health.

# COVID-19 Response Framework

- Peel remains in the Grey-Lockdown
  - Outdoor dining permitted, limiting tables to members of the same household with exemptions for patrons who live alone and caregivers
- Province assessing adjustments for some outdoor activities where the risk of transmission is minimized
- Further consideration of measures **must be balanced** against rapid case increases (case-hospitalization-intensive care-death cascade)
  - Increasing evidence variants are more severe in addition to being more transmissible

# Response Challenges

Challenge	Example	Mitigation
<b>Case and contact tracing capacity limits</b>	<ul style="list-style-type: none"><li>• More than 300 cases/day</li><li>• Backlog at beginning of week of 600 cases, likely to increase without action</li></ul>	<ul style="list-style-type: none"><li>• On March 23, moved to high-risk case and contact management</li><li>• Calling for staff overtime</li><li>• Request additional support from Province (e.g., case managers)</li><li>• New recruitment</li></ul>
<b>Fatigue with public health measures</b>	<ul style="list-style-type: none"><li>• Increased frustration among residents and businesses</li><li>• Risk of non-compliance</li></ul>	<ul style="list-style-type: none"><li>• Advocacy for supports (e.g., paid sick leave, more business relief)</li><li>• New communication campaign underway</li><li>• Exploring all options with the Province to adapt measures</li></ul>

# Community Mass Vaccination Plan Update





# Mass Vaccination Highlights

## Process Accomplishments

- >75% of 1,600 needed staff hired
- 9 out of 10 fixed clinics open
- Ongoing mobile clinics
- Ministry's COVax-ON Vaccine Appointment Booking (VAB)

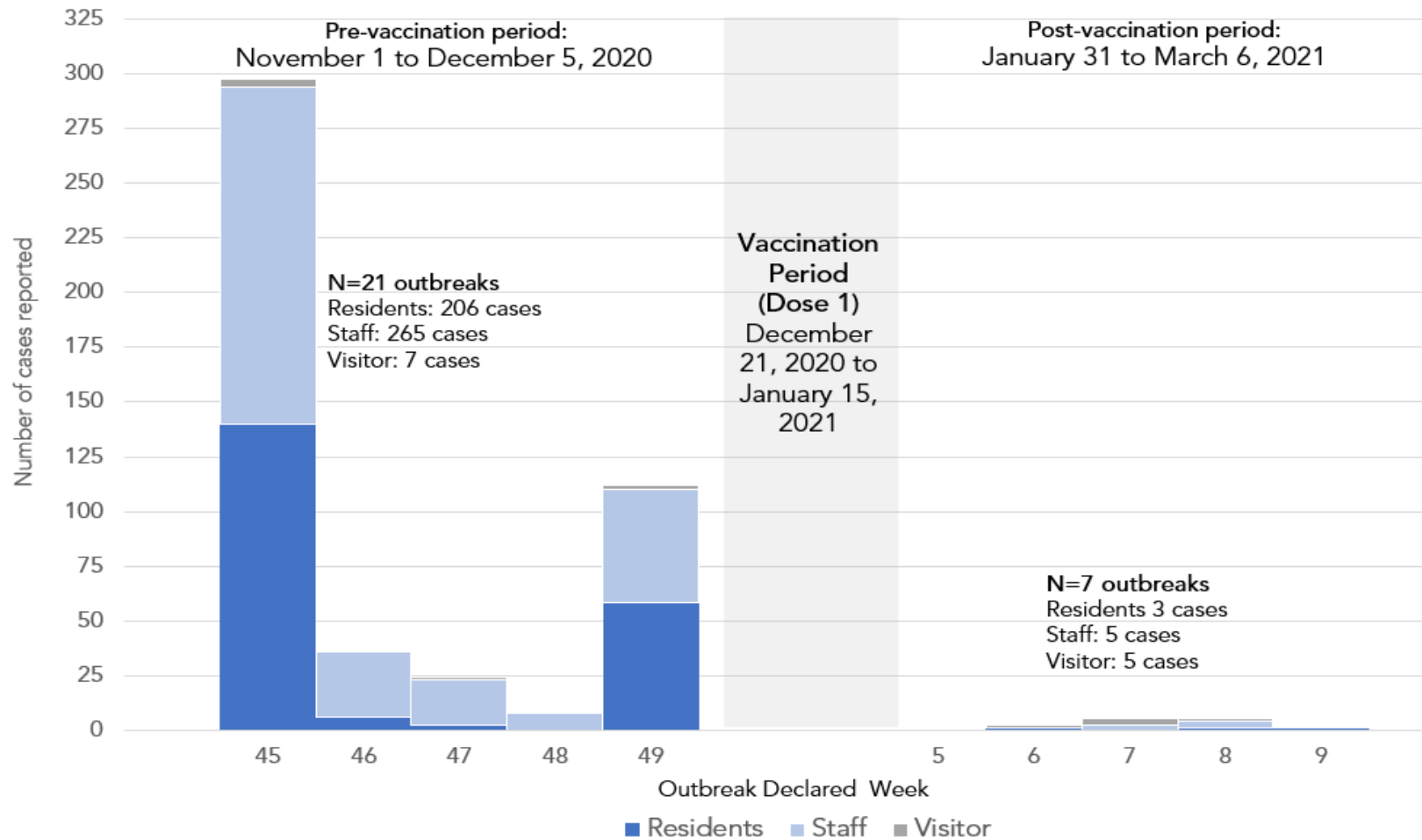
## Results

- 111,664 doses administered
- Vaccinated long-term care home and high-risk retirement home residents and staff before the provincial deadline
- Vaccinating eligible priority groups



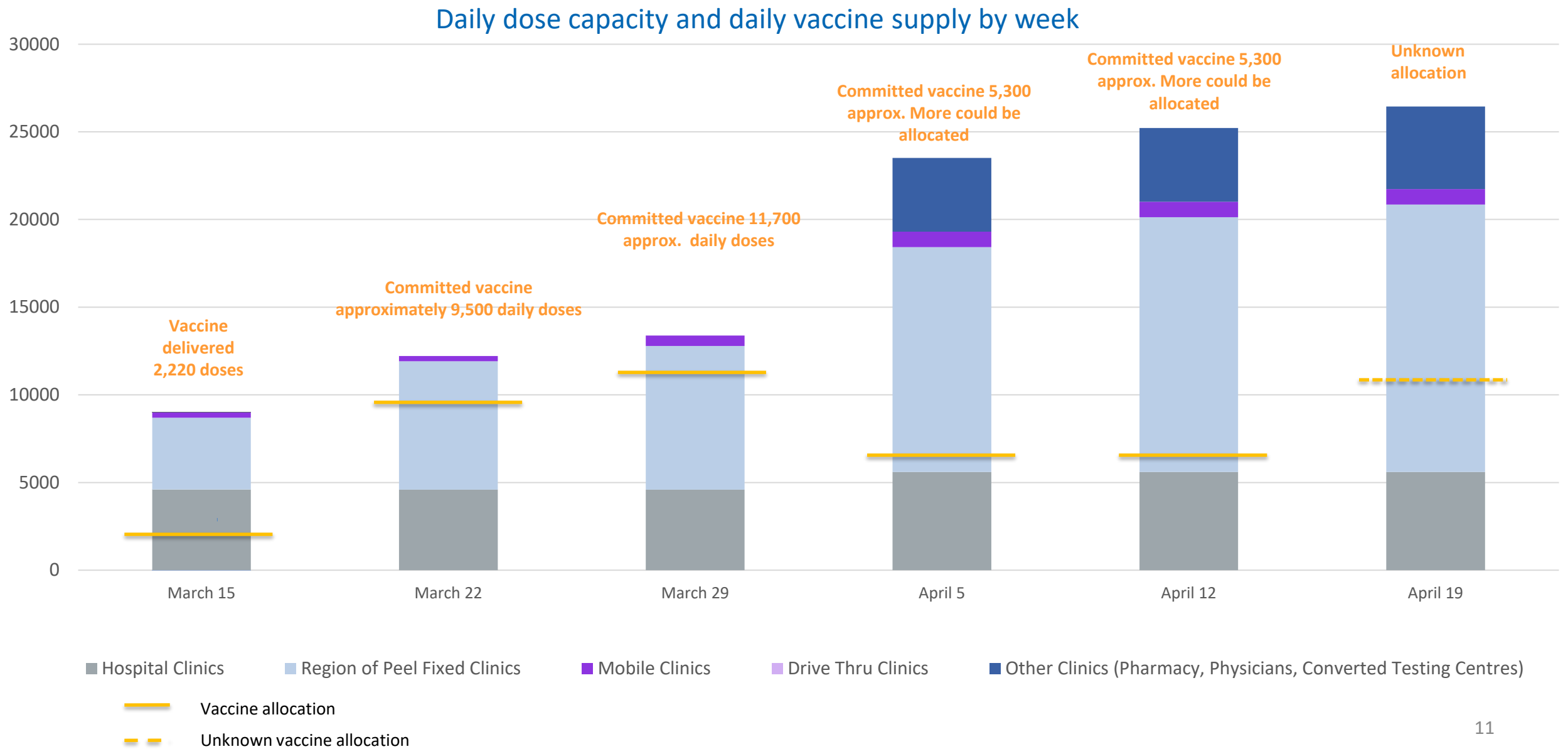
# Peel Long Term Care Home Outbreaks Before and After Vaccination

Confirmed COVID-19 cases in Peel Long Term Care home outbreaks declared between November 1 to December 5, 2020 and January 31 to March 6, 2021

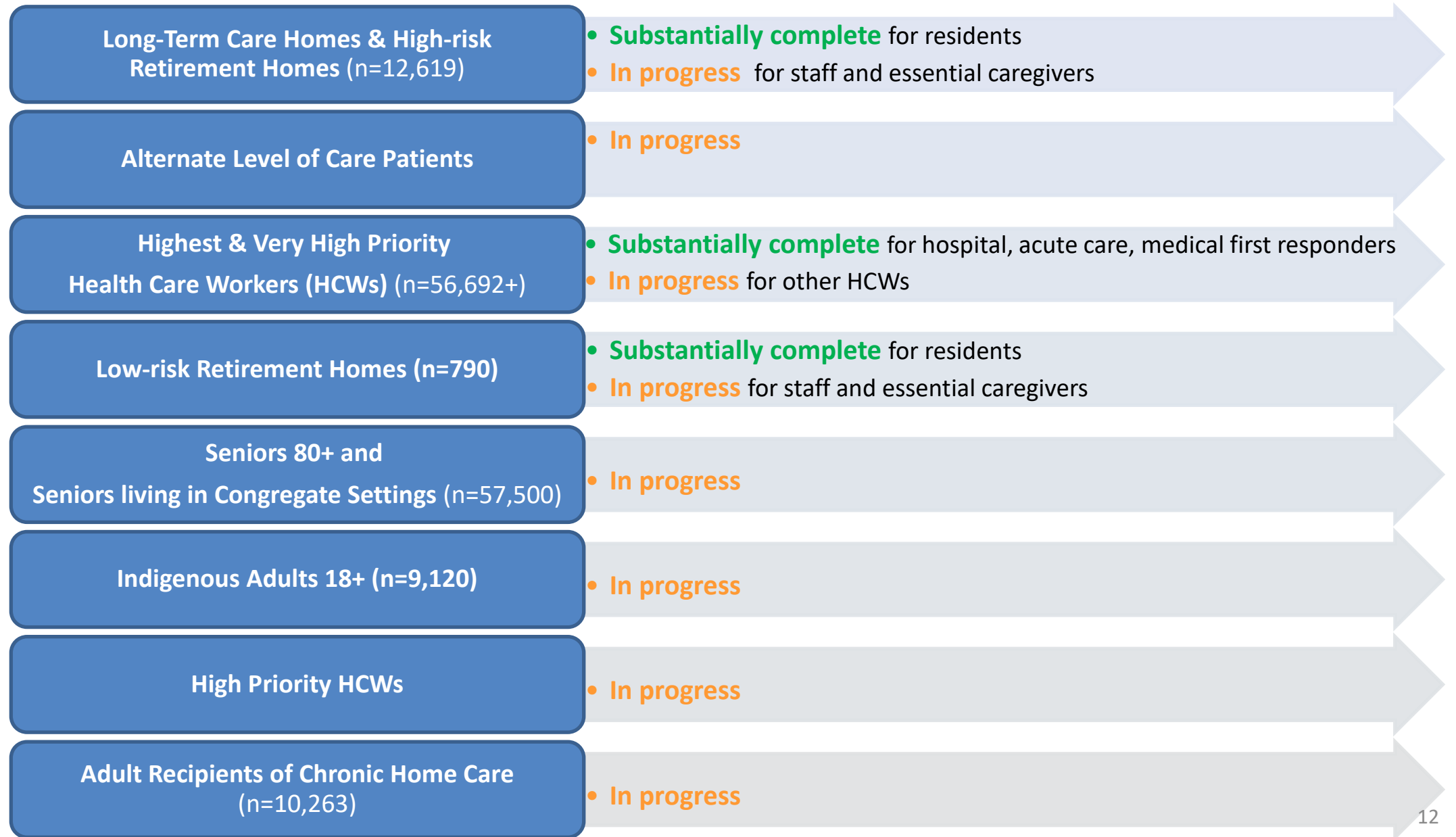


Preliminary results show reduction in outbreaks and reduction in outbreak associated cases

# Mass Vaccination System Overview



## All Phase 1 Priority Groups in Progress or Complete



# Planning for Phase 2 Priority Groups

	Primary Priority		Secondary Priority	
	APR	MAY	JUN	JUL
Older adults	Over 75 (in progress)			
	Over 70			
	Over 65			
	Over 60 (in progress) primary care pilot			
Health conditions	Individuals with health conditions			
	Highest Risk & Caregivers	High Risk & Certain Caregivers	At Risk Health Conditions	
Congregate Settings	High Risk Congregate Living Settings (in progress)			
Hot Spots	COVID-19 Hot Spot Communities			
	Highest Risk Communities	Remaining Hot Spot Communities		
Cannot-Work-From-Home			Essential Workers who cannot work from home	
			Group 1	Group 2

# Community Mass Vaccination Challenges

Challenge	Example	Mitigation
<b>Provincial vaccine and supply allocation</b>	<ul style="list-style-type: none"> <li>Limited supply</li> <li>Volatility of vaccine and personal protective equipment supply</li> </ul>	<ul style="list-style-type: none"> <li>Ongoing advocacy to the Province</li> </ul>
<b>Managing booking and appointments</b>	<ul style="list-style-type: none"> <li>Neither booking system is optimal (e.g., only gating by age in provincial system)</li> <li>Inability to book in advance (due to limited supply)</li> <li>High volume of public inquiries</li> </ul>	<ul style="list-style-type: none"> <li>Book your appointment site (for all system partners)</li> <li>Preregistration system in development</li> <li>Work with partners to improve processes</li> </ul>
<b>Staffing</b>	<ul style="list-style-type: none"> <li>Staff are working 6-7 days a week to ensure coverage</li> <li>Onboarding and training for over 1600 new staff, physicians and volunteers</li> </ul>	<ul style="list-style-type: none"> <li>Ongoing recruitment</li> <li>Leverage of community resources</li> </ul>
<b>Public confusion</b>	<ul style="list-style-type: none"> <li>Different messages from Ministry and across health units (e.g. age groups for pilots and prioritization)</li> </ul>	<ul style="list-style-type: none"> <li>Public communication campaign underway</li> <li>Active outreach for priority groups</li> </ul>





Thank you

---

