



**RECEIVED**

August 3, 2021

REGION OF PEEL

OFFICE OF THE REGIONAL CLERK

VIA E-MAIL

Council@peelregion.ca

August 3, 2021

Members of Regional Council  
Region of Peel  
10 Peel Centre Drive  
Brampton, ON  
L6T 4B9

Dear Members of Regional Council:

**RE: Peel Region 2051 Municipal Comprehensive Review  
Inclusion of lands owned by Bolton North Hill Landowners Group in Draft  
Bolton Settlement Area Boundary Expansion (SABE)**

Solmar Development Corp., are owners of the lands located west of Mount Hope Road and north of Columbia Way in Bolton as shown in the attached context map.

Please accept this written submission as our support that the entirety of the “Option 1/2” lands owned by the Bolton North Hill Landowners Group (“BNHL Group”) be included in the settlement area boundary expansion (SABE) as part of the Peel 2051 Official Plan Review. The confirmation of our support is in line with the request to Regional Council from Michael Bissett, Bousfields Inc., in a letter dated May 19, 2021, on behalf of his client, BNHL Group.

Regards,

Luis Correia  
Senior Director, Development and Planning

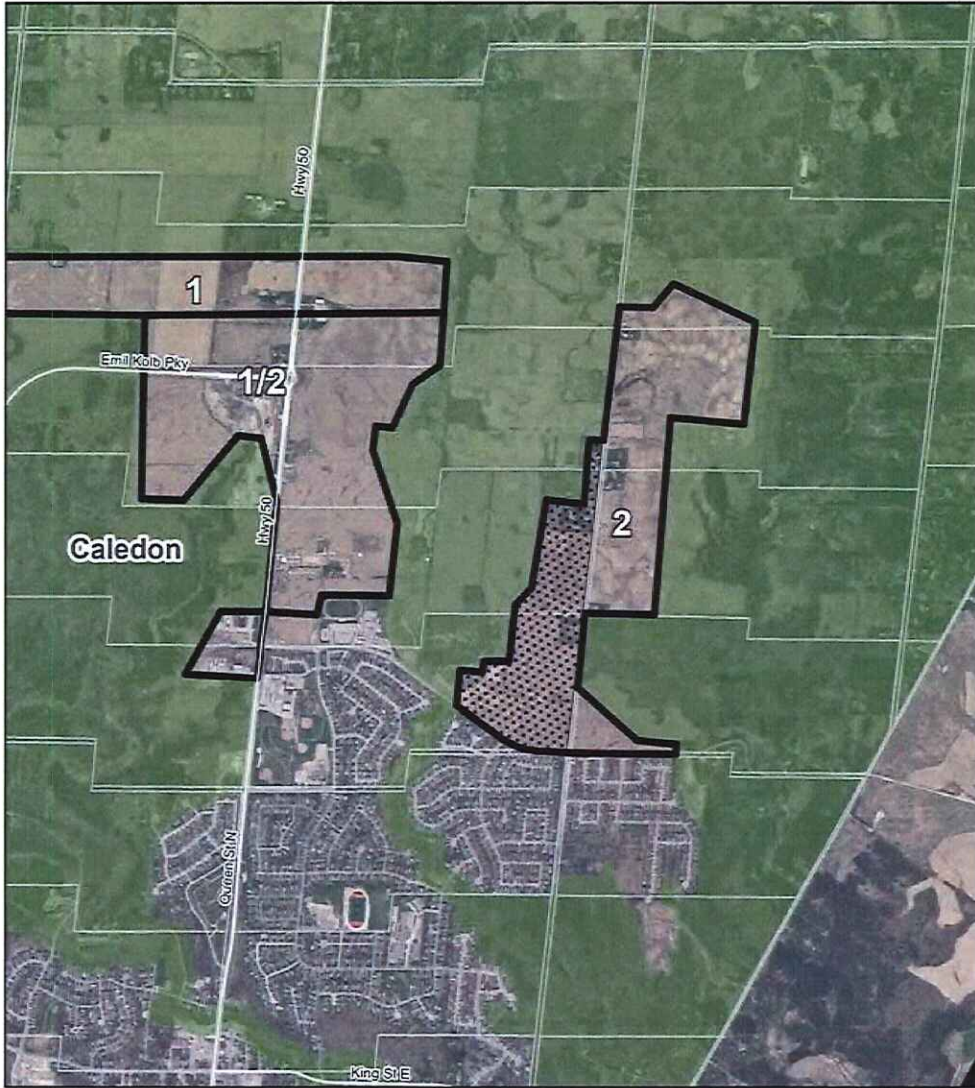
Cc: Benny Marotta, Solmar Development Corp.  
Rino Mostacci, Solmar Development Corp.  
Adrian Smith, Region of Peel

REFERRAL TO \_\_\_\_\_  
RECOMMENDED \_\_\_\_\_  
DIRECTION REQUIRED \_\_\_\_\_  
RECEIPT RECOMMENDED  \_\_\_\_\_

122 ROMINA DRIVE, CONCORD, ONTARIO L4K 4Z7 TEL: (905) 660-0222 FAX: (905) 660-4002

[www.solmar.ca](http://www.solmar.ca)

Context Map



**Legend**

 BRES OPTIONS

 Solmar Developments Landholdings -34.77ha