

# 2021

## Region of Peel



# Federal Election Priorities

CAO-0364 21/08

## Infrastructure funding

The next federal government should increase infrastructure funding to stimulate Peel's economic recovery and implement an allocation model to distribute funds efficiently and expeditiously.

Investment in Regional projects will help the federal government achieve key priorities, such as creating jobs and building an integrated transportation network, which will be essential for Canada's economic recovery efforts.

To ensure value for tax dollars, the next federal government should further implement an allocation funding model for infrastructure, which provides municipalities with predictability, flexibility to focus on priority projects and allows realistic planning timeframes.



## Green recovery

The next federal government should provide sustained funding to reduce greenhouse gas emissions and address climate change risks to critical municipal infrastructure.

Every dollar invested in climate adaptation saves \$6 in future costs – at a time when annual property damage costs from extreme weather have already risen from \$405 million (1983 – 2008 average) to \$1.8 billion in 2018. Federal investments would allow the Region to address critical infrastructure needs, further its response to COVID-19 and enhance Peel's green economic recovery from the pandemic.



Reacting to impacts of extreme weather will cost municipalities more than proactively investing in resilient infrastructure. It is vital that the next federal government focus on advancing mutual bilateral and regional priorities and engage with municipalities to build on the strong foundation of climate action already in place.

## Sustainable transportation and Vision Zero

The next federal government should increase funding for active transportation initiatives and transit infrastructure to support sustainable transportation and reduce greenhouse gas emissions.

Peel is a fast-growing and diverse community – the region's population and employment are expected to grow to a total of approximately two million residents and 970,000 jobs by 2041. This growth will have significant pressures on the Region's transportation network and cannot be met simply by adding more road lanes.

To accommodate this travel demand, continued commitment and partnership are needed from all levels of government, and particularly as it relates to advancing municipal active transportation projects and in key transit projects across Peel, including:

- GO Rail service to Bolton
- Two-way, all-day, 15-minute GO Regional Express Rail for Milton
- Continued implementation of two-way, all-day, 15-minute GO Rail Service on the Kitchener Line
- Eglinton Crosstown West LRT Extension to Toronto Pearson Airport



## Child care

The next federal government should continue to implement a Canada-wide child care plan that includes funding to expand affordable, high-quality child care and maintain a qualified workforce, and allow flexible use of funding to efficiently address local needs and circumstances.

It is essential that families have access to safe, reliable and affordable child care. With a growing and diverse population, who currently pay some of the highest costs for child care in the country, Peel supports current efforts to partner with the provinces to implement a Canada-wide child care system with an engaged, qualified workforce.

The next federal government should build on this progress and ensure the system that is implemented takes into account the unique needs of municipalities. As well, funding models and bilateral agreements should offer flexibility on how to achieve system outcomes, given the diverse local needs and variable project timelines.

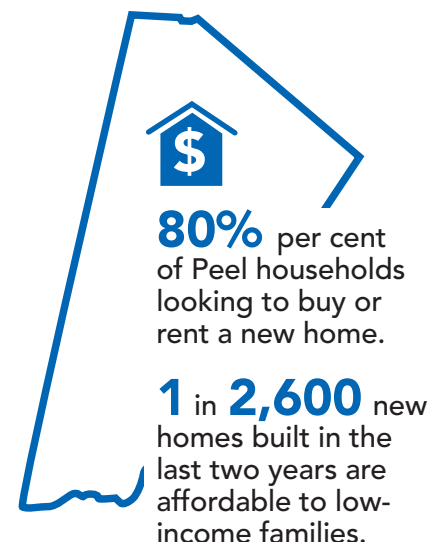


## Affordable housing

The next federal government should uphold existing funding commitments to the Region of Peel for affordable housing and collaborate with municipalities to improve the design and funding of housing programs.

Peel Region continues to be a destination of choice, but growth pressures have also created a housing affordability crisis. Average market housing prices remain out of financial reach for 80 per cent of Peel households and it is estimated that less than 1 in 2,600 new homes built in the last two years are affordable to low-income families.

The cost of addressing critical needs in the local housing system in Peel goes far beyond the Region's ability to pay, with limited funding sources available to municipalities. Funding programs



should be reformed to ensure cost-sharing is proportional to the funding capacity of a government's revenue tools and federal funding commitments should be indexed to inflation, market housing prices, and client need, and should be distributed in the form of contributory grants, allocation-based and flexible.

## Long-term care

The next federal government should support emotion-based care as a critical component of long-term care, and provide measurement tools and additional funding streams along the seniors care continuum to enable successful implementation as part of a national standard.

Seniors are the fastest growing age group in Peel and it is expected that by 2041, one in five residents in the region will be over 65 years of age. For every five years we live past the age of 65, the chances of developing dementia doubles. To meet the complex care needs of people living with dementia, it is essential that LTC homes and comparable community-based care have the necessary resources to provide a specialized approach to care that is based on person-centred, emotion-based care.

Moving forward, emotion-based care should be a central component of national LTC standards to ensure safe, reliable, high-quality care and overall well-being of people both living in LTC homes, as well as in the community, and additional funding should be allocated to support the standardization and broad application of the model.

