

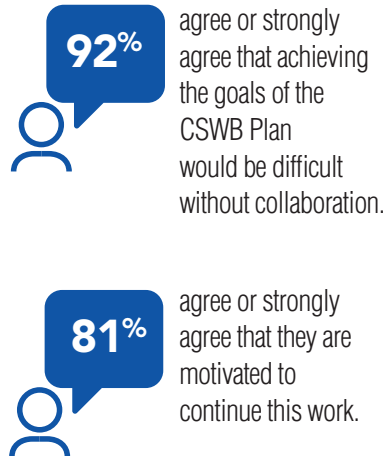


Collaboration guides our work

There are 7 CSWB
tables that include:



What we heard from our partners



Drive
policy change

Ensure organizations' **input & needs** reflected in work

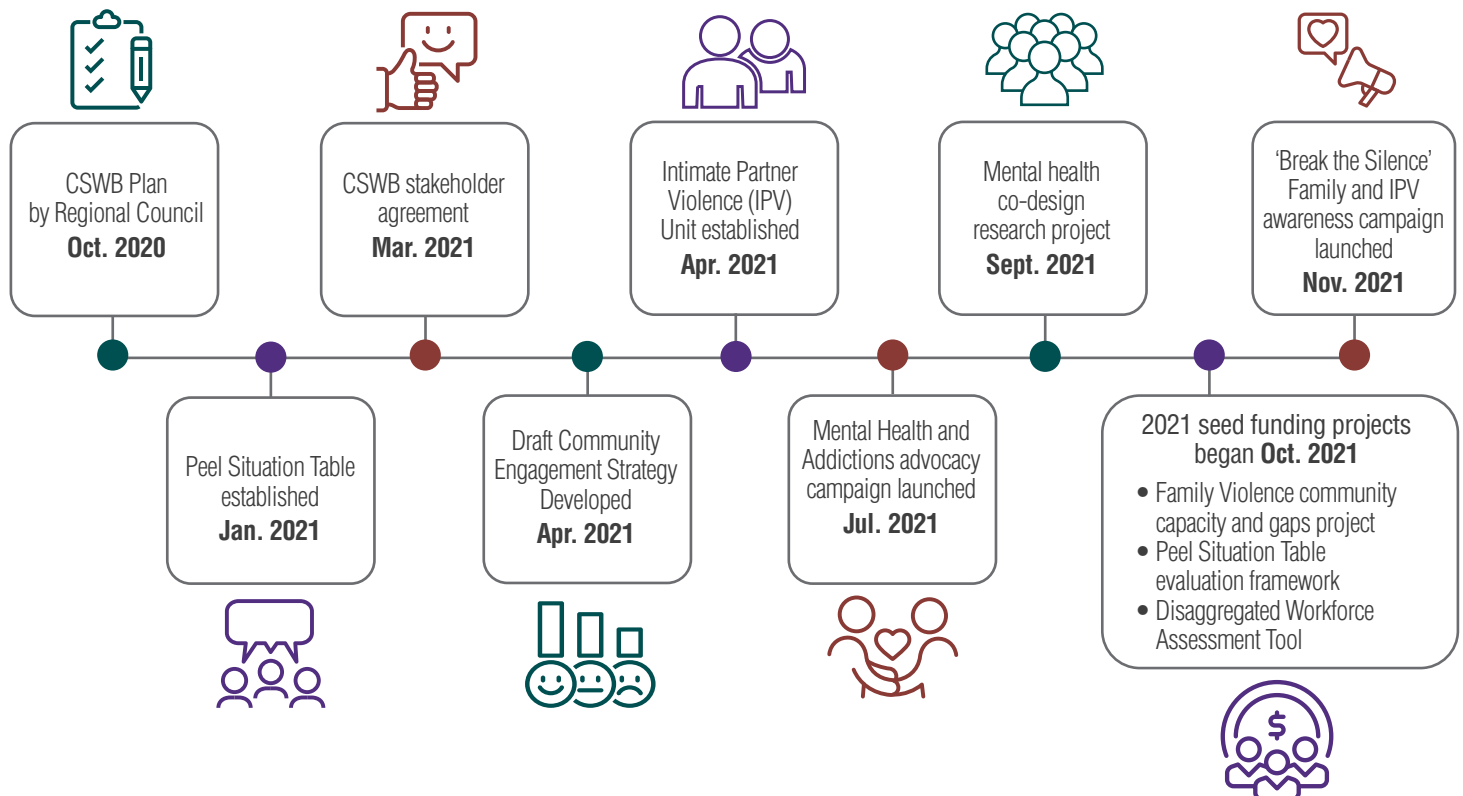
Leverage resources & work across organizations **share data** information and best practices

Align & coordinate work **reduce duplication**

CSWB Addressing broad-based social activities & health inequity issues requires **collaborative approach**

Build
social safety net

2021 key milestones





Progress of key focus areas

Family Violence (FV)

Family Violence community capacity and gaps project

Launched survey to assess community capacity for addressing family violence in Peel to identify gaps, and to inform system improvements and shared advocacy efforts.

Intimate Partner Violence (IPV) Unit

Specialized police unit at Safe Centre of Peel as an onsite partner to improve access to support for survivors of violence.

Apr. to Dec. 2021:
1,558 occurrences
assigned to IPV unit
(avg. 195 per month).

Note: only includes criminal IPV calls.

4,745 IPV charges
laid through IPV unit.
Top charges were:

- Assault • Utter Threats • Fail to Comply
- Assault with a Weapon • Strangulation

'Break the Silence'



Family and IPV Awareness Campaign aimed to increase public awareness and encourage conversation about gender-based violence and violence against women.



Mental Health and Addictions (MHA)

MHA



Targeted at provincial partners to increase funding for Peel's mental health and addictions system and address existing gaps in service.

Each social media post reached an average of 1,200 -1,500 individuals.



MHA action table collaborating on mental health co-design research project

A participatory research project to co-design improvements to mental health care with young adults, their family/friend carers and service providers.

Peel Situation Table (PST)

Identify high-risk situations and proactively provide support to reduce harm.



50 organizations now represented at the PST
79 situations seen at the PST in 2021

Top 5 risk factors identified in 2021:

- Diagnosed Mental Health Concern
- Antisocial/Negative Behaviour
- Housing • Drug Abuse • Unemployment

Situations brought to the PST involving youth:

24% involving 12 to 17-year-olds in 2021
14% involving 18 to 24-year-olds in 2021

Systemic Discrimination (SD)

Stakeholder Agreement

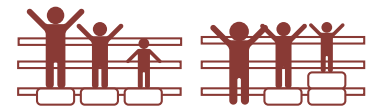


24 organizations signed
on demonstrating their commitment to advancing equity and inclusion and addressing systemic discrimination.

Community Engagement Strategy



This strategy will help include perspectives of people with lived experience, and **will be implemented in 2022.**



Disaggregated Workforce Assessment Tool

In **March 2022**, a workforce census survey and toolkit was launched to help organizations in Peel collect equity-related data on their workforce.