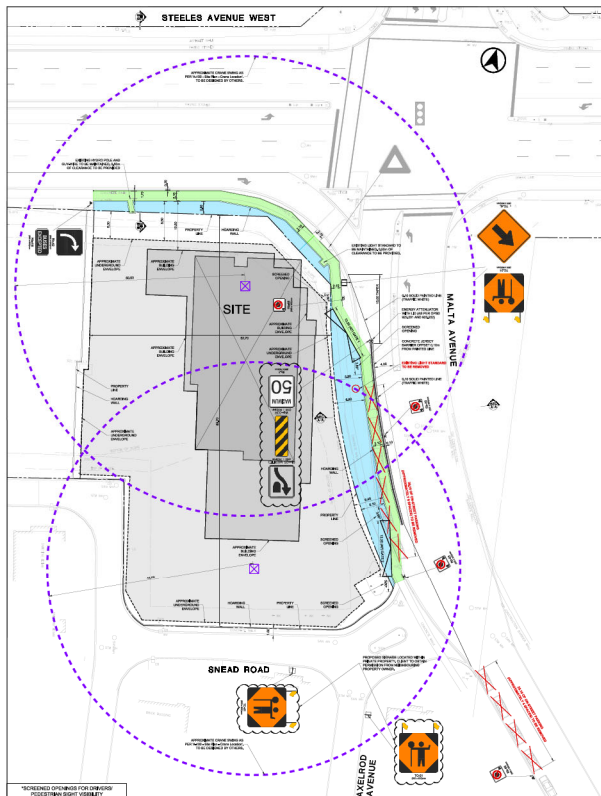
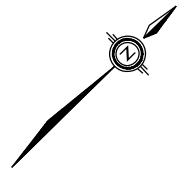
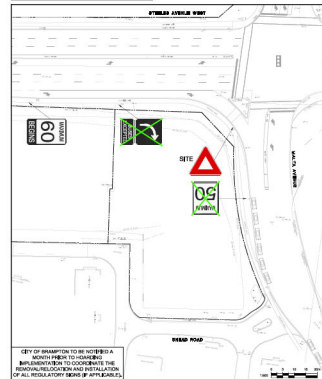


Appendix II - Crane Swing Placement

Crane Swing Agreement - 260 Malta Avenue
City of Brampton - Ward 4
Owner: National Brixen (Steeles) Inc.



EXISTING TRAFFIC CONTROLS
X REMOVE & STORE SIGN
X RELOCATE SIGN (REFER TO ADJACENT PLAN FOR NEW LOCATION)



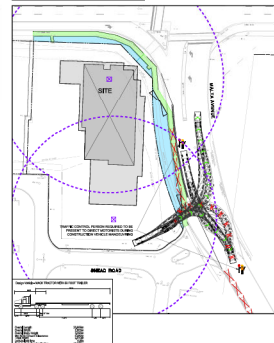
GENERAL NOTES

1. WORK SHALL BE COMPLETED WITHIN THE FOLLOWING DEADLINE:
2. THE CONTRACTOR SHALL MAINTAIN ACCESS TO ALL ADJACENT PROPERTIES AT ALL TIMES.
3. ALL TRUCKS AND EQUIPMENT SHALL BE OPERATED IN ACCORDANCE WITH THE CITY OF BRAMPTON'S TRAFFIC BYLAWS.
4. THE CONTRACTOR SHALL MAINTAIN ACCESS TO ALL ADJACENT PROPERTIES AT ALL TIMES.
5. THE CONTRACTOR SHALL MAINTAIN ACCESS TO ALL ADJACENT PROPERTIES AT ALL TIMES.
6. THE CONTRACTOR SHALL MAINTAIN ACCESS TO ALL ADJACENT PROPERTIES AT ALL TIMES.
7. THE CONTRACTOR SHALL MAINTAIN ACCESS TO ALL ADJACENT PROPERTIES AT ALL TIMES.
8. THE CONTRACTOR SHALL MAINTAIN ACCESS TO ALL ADJACENT PROPERTIES AT ALL TIMES.
9. THE CONTRACTOR SHALL MAINTAIN ACCESS TO ALL ADJACENT PROPERTIES AT ALL TIMES.
10. THE CONTRACTOR SHALL MAINTAIN ACCESS TO ALL ADJACENT PROPERTIES AT ALL TIMES.
11. THE CONTRACTOR SHALL MAINTAIN ACCESS TO ALL ADJACENT PROPERTIES AT ALL TIMES.
12. THE CONTRACTOR SHALL MAINTAIN ACCESS TO ALL ADJACENT PROPERTIES AT ALL TIMES.
13. THE CONTRACTOR SHALL MAINTAIN ACCESS TO ALL ADJACENT PROPERTIES AT ALL TIMES.
14. THE CONTRACTOR SHALL MAINTAIN ACCESS TO ALL ADJACENT PROPERTIES AT ALL TIMES.
15. THE CONTRACTOR SHALL MAINTAIN ACCESS TO ALL ADJACENT PROPERTIES AT ALL TIMES.
16. THE CONTRACTOR SHALL MAINTAIN ACCESS TO ALL ADJACENT PROPERTIES AT ALL TIMES.
17. THE CONTRACTOR SHALL MAINTAIN ACCESS TO ALL ADJACENT PROPERTIES AT ALL TIMES.
18. THE CONTRACTOR SHALL MAINTAIN ACCESS TO ALL ADJACENT PROPERTIES AT ALL TIMES.
19. THE CONTRACTOR SHALL MAINTAIN ACCESS TO ALL ADJACENT PROPERTIES AT ALL TIMES.
20. THE CONTRACTOR SHALL MAINTAIN ACCESS TO ALL ADJACENT PROPERTIES AT ALL TIMES.

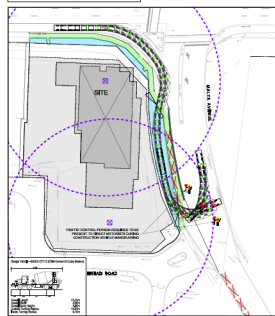
TRACTOR TRAILER MOVEMENT
BELOW GRADE



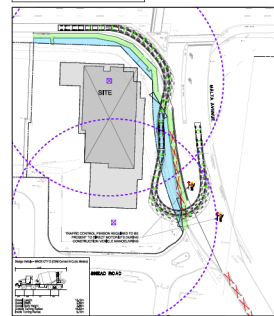
TRACTOR TRAILER MOVEMENT
ABOVE GRADE



CONCRETE TRUCK MOVEMENT
BELOW GRADE



CONCRETE TRUCK MOVEMENT
ABOVE GRADE



1. ROAD: SEE MAP TO LOCATE SITE LOCATION
2. ROAD: SEE MAP TO LOCATE SITE LOCATION
3. ROAD: SEE MAP TO LOCATE SITE LOCATION
4. ROAD: SEE MAP TO LOCATE SITE LOCATION
5. ROAD: SEE MAP TO LOCATE SITE LOCATION
6. ROAD: SEE MAP TO LOCATE SITE LOCATION
7. ROAD: SEE MAP TO LOCATE SITE LOCATION
8. ROAD: SEE MAP TO LOCATE SITE LOCATION
9. ROAD: SEE MAP TO LOCATE SITE LOCATION
10. ROAD: SEE MAP TO LOCATE SITE LOCATION
11. ROAD: SEE MAP TO LOCATE SITE LOCATION
12. ROAD: SEE MAP TO LOCATE SITE LOCATION
13. ROAD: SEE MAP TO LOCATE SITE LOCATION
14. ROAD: SEE MAP TO LOCATE SITE LOCATION
15. ROAD: SEE MAP TO LOCATE SITE LOCATION
16. ROAD: SEE MAP TO LOCATE SITE LOCATION
17. ROAD: SEE MAP TO LOCATE SITE LOCATION
18. ROAD: SEE MAP TO LOCATE SITE LOCATION
19. ROAD: SEE MAP TO LOCATE SITE LOCATION
20. ROAD: SEE MAP TO LOCATE SITE LOCATION

BA Group
245 STEELES AVENUE WEST

TRAFFIC MANAGEMENT DURING
CONSTRUCTION PLAN

DATE: MAY 15, 2023
BY: [Signature]
FOR: [Signature]

TMDC-1