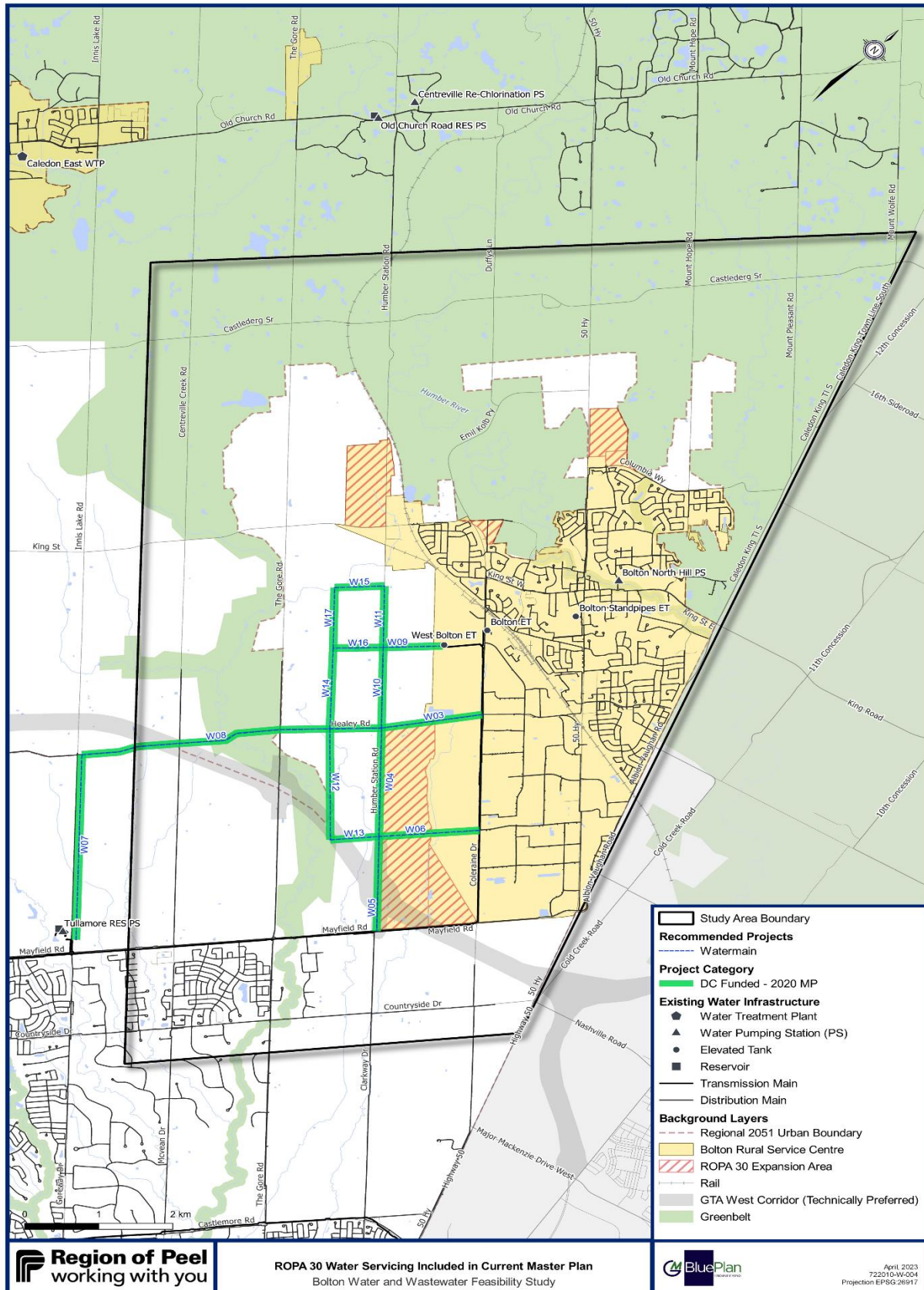


Appendix II Bolton Water and Wastewater Servicing Strategy

ROPA 30 Water and Wastewater Servicing Included in the Current Master Plan

a) ROPA 30 Water Servicing Included in the Current Master Plan



ROPA 30 Water Servicing Included in Current Master Plan
Bolton Water and Wastewater Feasibility Study

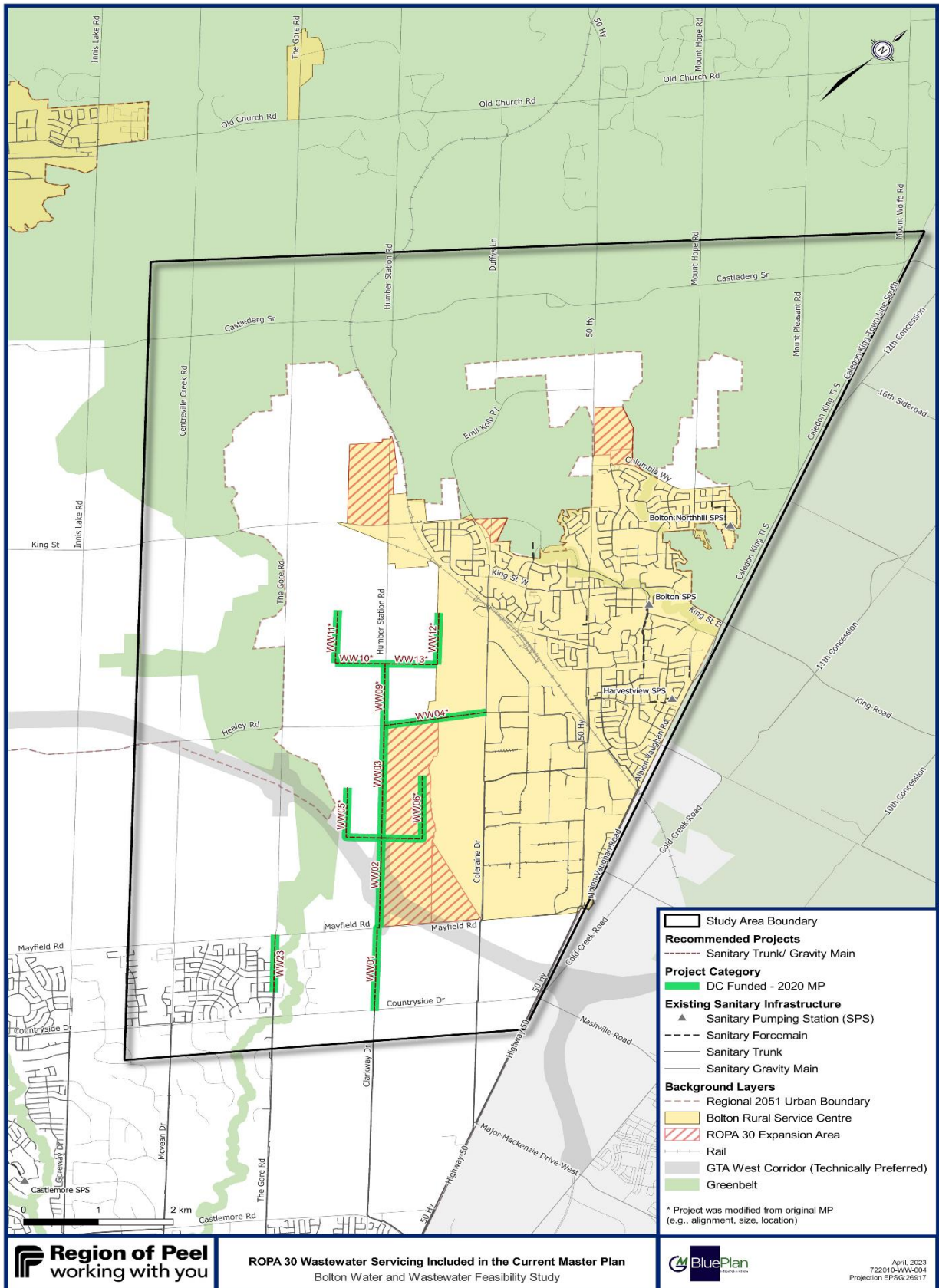


April 2023
722010-W-504
Projection: EPSG:3856

Appendix II Bolton Water and Wastewater Servicing Strategy

ROPA 30 Water and Wastewater Servicing Included in the Current Master Plan

b) ROPA 30 Wastewater Servicing Included in the Current Master Plan



**Appendix II
Bolton Water and Wastewater Servicing Strategy**

ROPA 30 Water and Wastewater Servicing Included in the Current Master Plan

Table 1. Summary of Projects Included in Current Master Plan to Service ROPA 30

Label on Map	Project Name	Estimated In Service Year	Dependency	Option
W03	Z6 600-mm sub-transmission main on Healy Road from Humber Station Road to Coleraine Drive	2025	Independent/ align with WW4	n/a
W04	Z6 400-mm water main on Humber Station Road from a future street north of Mayfield Road to Healey Road	2025	Currently underway	6
W05	Z6 400-mm water main on Humber Station Road from Mayfield Road to 1450m northerly	2025	Currently Underway	6
W06	Z6 400-mm water main on a future street north of Mayfield Road from Humber Station Road to Coleraine Drive	2026	Road construction	6
W07	Z6 750-mm sub-transmission main on Innis Lake Road from the Tullamore Pumping Station to Healey Road	2031	Independent	n/a
W08	Z6 600-mm sub-transmission main on Healy Road from Innis Lake Road to Humber Station Road	2031	Independent	n/a
W09	Z6 400-mm water main on a future street north of Healey Road from West Bolton Elevated Tank to Humber Station Road	2031	Road construction	6
W10	Z6 400-mm water main on Humber Station Road from Healey Road to a future street northerly	2031	Independent/ align with WW09	6
W11	Z6 400-mm water main on Humber Station Road from a future street north of Healey Road to approximately 1200m northerly	2031	Independent/ W10	n/a
W12	Z6 400-mm water main on a future street from Healy Road to approximately 1680m southerly, east of Humber Station Road	2032	Road / development driven	n/a
W13	Z6 400-mm water main on a future street from Humber Station Road to 660m westerly	2032	Road / development driven	n/a
W14	Z6 400-mm water main on a future street from Healey Road to 1220m northerly, west of Humber Station Road	2036	Road / development driven/ W08	n/a
W15	Z6 400-mm water main on a future street from Humber Station Road to 680m westerly, south of King Street	2036	Road / development driven	n/a
W16	Z6 400-mm water main on a future street from Humber Station Road to 680m westerly	2036	Road / development driven	n/a

**Appendix II
Bolton Water and Wastewater Servicing Strategy**

ROPA 30 Water and Wastewater Servicing Included in the Current Master Plan

Label on Map	Project Name	Estimated In Service Year	Dependency	Option
W17	Z6 400-mm water main on a future street from future street north of Healey Road to 910m northerly, west of Humber Station Road	2036	Road / development driven	n/a
WW01	750-mm sanitary sewer on Clarkway Drive from Countryside Drive to Mayfield Road	2025	Currently underway	6
WW02	750-mm sanitary trunk sewer on Humber Station Rd from Mayfield Road to 1600m northerly	2025	Currently underway	6
WW03	750-mm sanitary trunk sewer on Humber Station Rd from Healey Rd to 1500m southerly	2025	Currently underway	6
WW04	450-mm sanitary sewer on Healey Road from Coleraine Drive to Humber Station Road	2025	Independent/ align with W3	n/a
WW05	450-mm sanitary sewer on a future street from Humber Station Road to 750m north-westerly	2027	Road / development driven	n/a
WW06	450-mm sanitary sewer on a future street from Humber Station Road to 960m north easterly	2027	Road / development driven	6
WW09	525-mm sanitary sewer on Humber Station Road from Healey Road to King Street	2031	Independent	n/a
WW10	450-mm sanitary sewer on a future street from Humber Station Road to 670 meters westerly	2036	Road / development driven	n/a
WW11	375-mm sanitary sewer on a future street from a future street 890m north of Healey Road to 800m northerly	2036	Road / development driven	n/a
WW12	375-mm sanitary sewer on a future street from a future street east of Humber Station Road to 780m northerly	2032	Road / development driven	n/a
WW13	450-mm sanitary sewer on a future street from Humber Station Road to 690m easterly, north of Healey Road	2032	Road / development driven	n/a
	Bolton Capacity Improvements Schedule C Class EA (ROPA30)	2024	Independent/ Underway	1/3/6

Total Cost of Water and Wastewater Projects Included in the Current Master Plan: **\$155M**