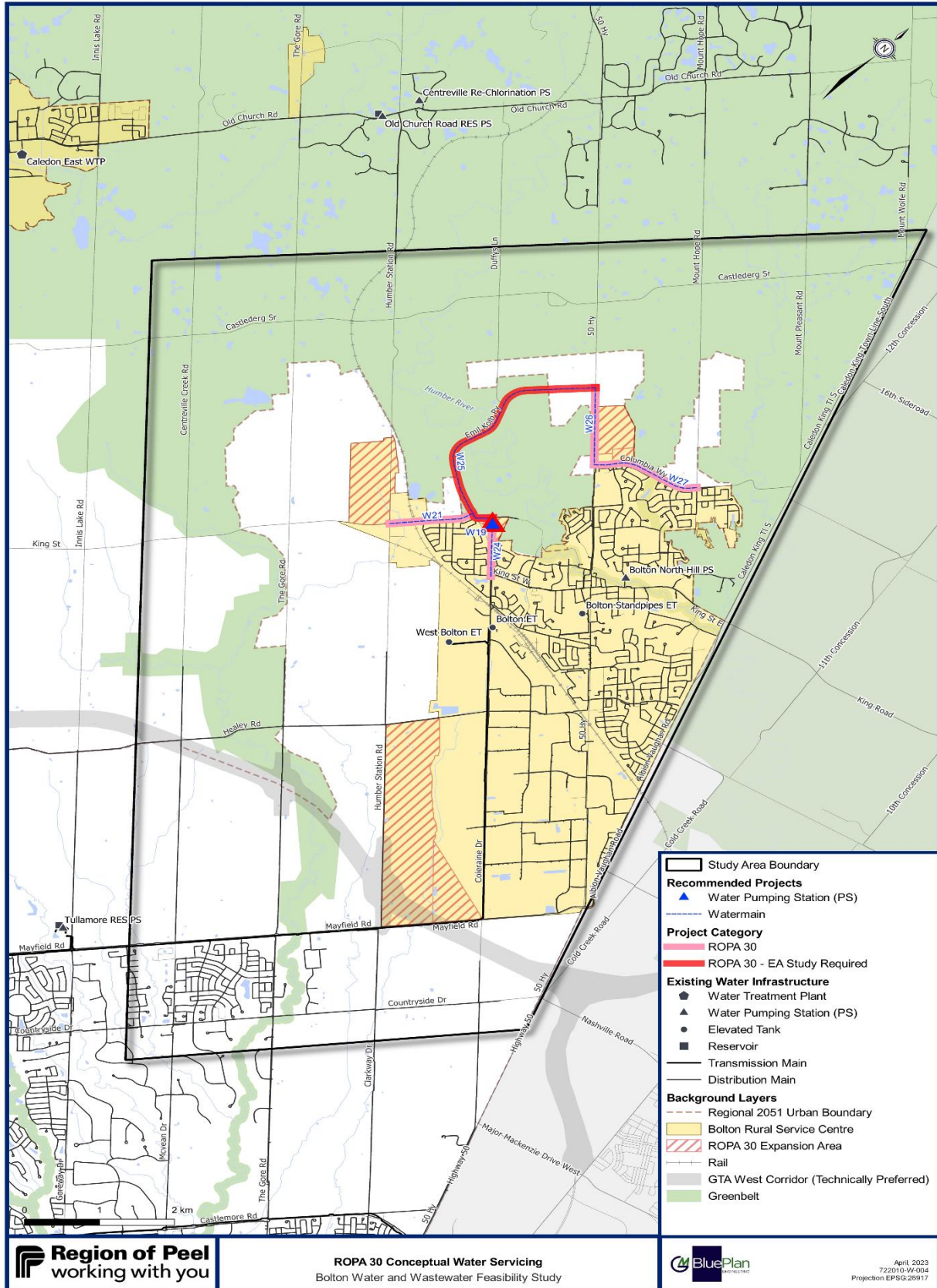


Appendix III Bolton Water and Wastewater Servicing Strategy

ROPA 30 Conceptual Water and Wastewater Servicing

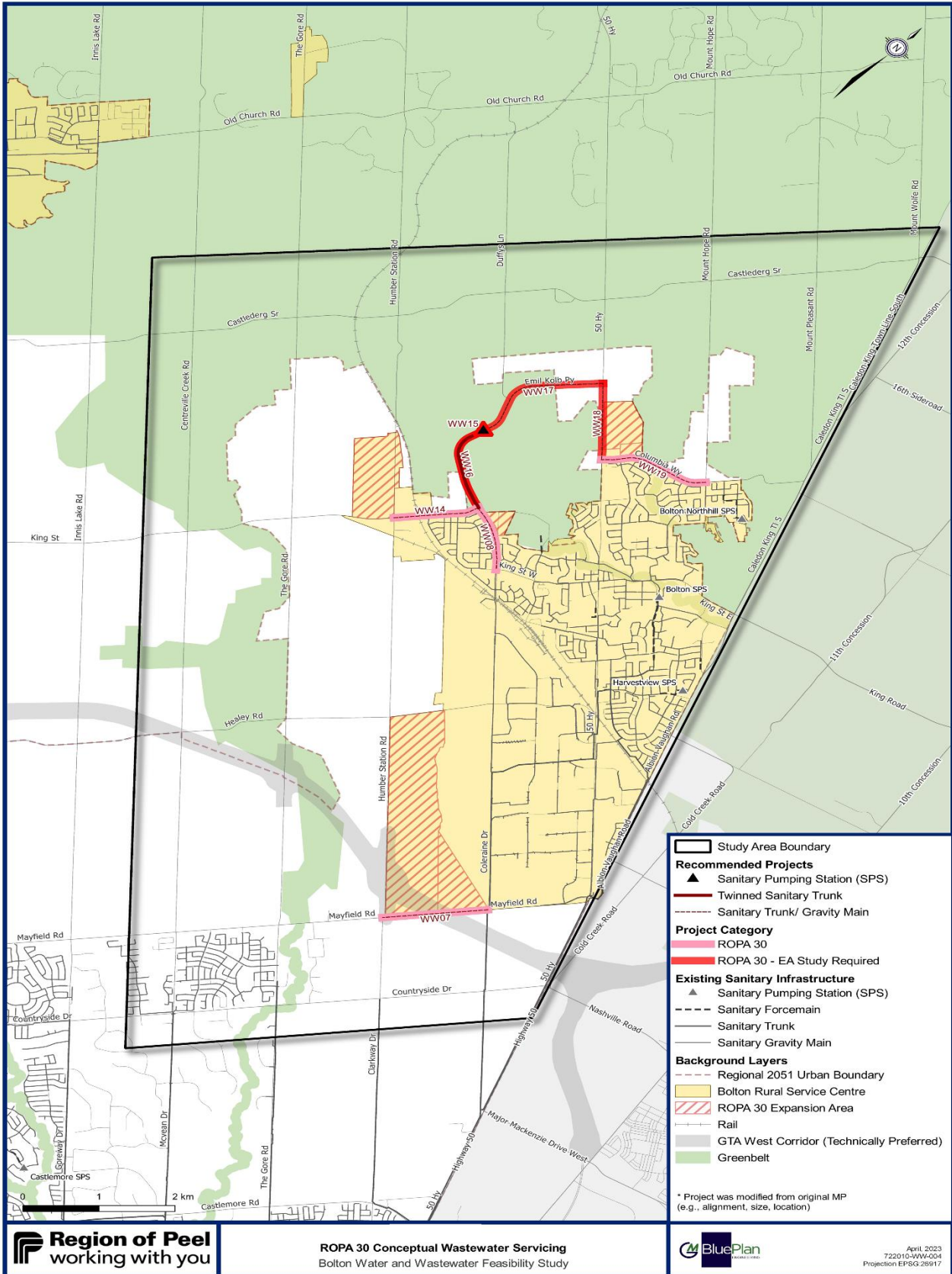
a) ROPA 30 Conceptual Water Servicing



Appendix III Bolton Water and Wastewater Servicing Strategy

ROPA 30 Conceptual Water and Wastewater Servicing

b) – ROPA 30 Conceptual Wastewater Servicing



**Appendix III
Bolton Water and Wastewater Servicing Strategy**

ROPA 30 Conceptual Water and Wastewater Servicing

Table 2. Summary of Projects for Consideration Based on Conceptual Servicing Strategies

Label on Map	Project Name	Estimated In Service Year	Dependency	Option
W19	New Z7E/7B Booster Pumping Station (Chickadee)	2027	EA/Study completion	1/3
W21	Z7E water main along King Street from Chickadee Lane to Humber Station Road	2027	Water BPS/ align with WW14	1/3
W24	Z6 sub-transmission main from Z7 BPS to existing 1050-mm stub	2027	Water BPS	1/3
W25	Z7 water main along Emil Kolb Parkway from King Street to Highway 50	2028	Water BPS/ align with WW16	1
W26	Z7 water main along Highway 50 / Queen Street from Emil Kolb Parkway to Columbia Way	2028	Water BPS/ align with WW18	1
W27	Z7 water main along Columbia Way from Highway 50 to Mount Hope Road	2028	Water BPS/ align with WW19	1
WW07	375-mm sanitary sewer on Mayfield Road from Coleraine Drive to Humber Station Road	2027	Independent	1
WW08	525-mm sanitary sewer on Emil Kolb Parkway from King Street to existing 450mm south of Harvest Moon Drive	2027	Align with W21	1/3
WW14	525-mm sanitary sewer on King Street from Humber Station Road to Emil Kolb Parkway	2027	Align with W24	3
WW15	New Humber Sewage Pumping Station (SPS)	2028	EA completion	1
WW16	300-mm twin sanitary forcemains from Humber SPS to King Street	2028	SPS	1
WW17	525-mm sanitary sewer on Emil Kolb Parkway from Highway 50 to Humber SPS	2028	SPS	1
WW18	525-mm sanitary sewer on Highway 50 from Columbia Way to Emil Kolb Parkway	2028	SPS	1
WW19	375-mm sanitary sewer on Columbia Way from Mount Hope Road to Highway 50	2028	SPS	1

Total Cost of Conceptual Water and Wastewater Projects: **\$143M**