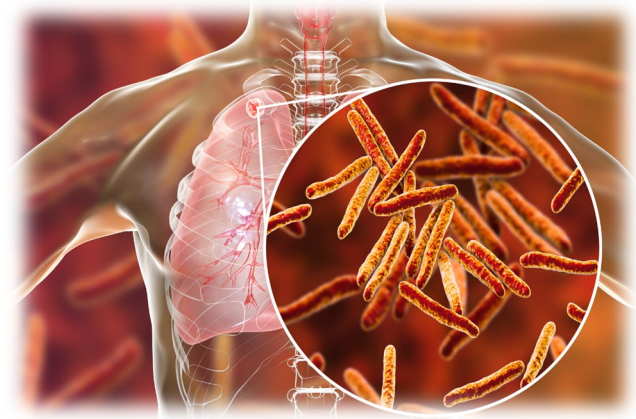


Strengthening the Tuberculosis Program in Peel

Judy Buchan
Director of Communicable Diseases
Region of Peel Public Health

What is Tuberculosis?

- Infectious disease caused by *Mycobacterium tuberculosis*.
- Spreads through the air from person to person.
- Can be active and infectious or latent (dormant).
- Preventable and curable.



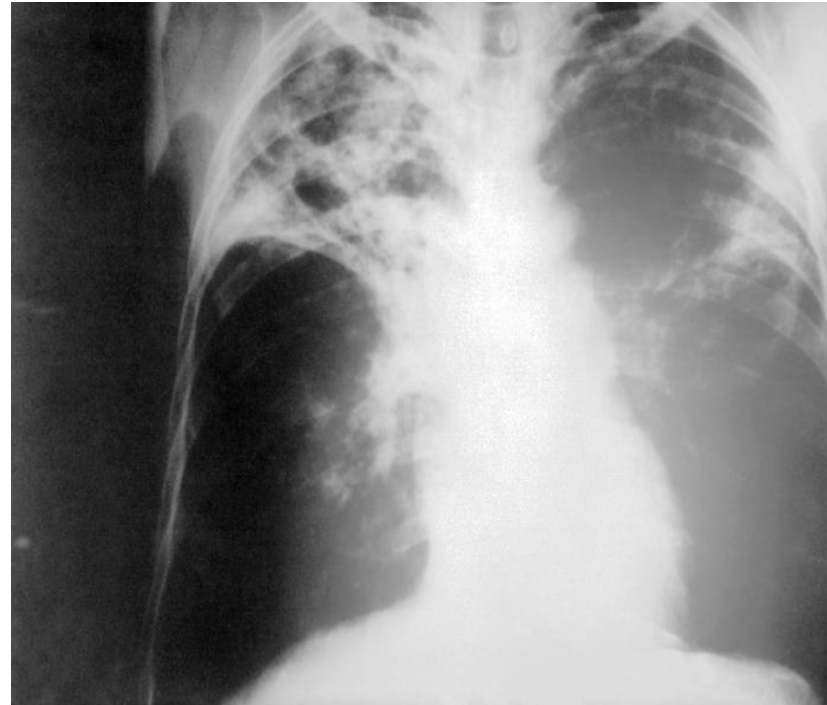
A Disease of **Inequity**

- Primarily impacts vulnerable populations.
- Socioeconomic challenges increase risk of developing disease.
- Stigma increases barriers.



Tuberculosis in Peel

- Peel's incidence rates of active TB are consistently **two times higher** than Ontario.
- Latent TB **treatment uptake and completion is poor.**
- **High global TB burden** and **Peel's immigration rates** will continue to increase the number of TB cases in Peel.



An anteroposterior X-ray of a patient diagnosed with advanced bilateral pulmonary tuberculosis. Source: PHIL Photo ID#2543

Tuberculosis rates by public health unit for all ages, for all sexes, Ontario, 2021

Ontario

Rate: 4.7

Total Cases: 702

Cases did not specify as male or female: 1

Population: 14,826,276

Note: Cases that did not specify as male or female are included in total case counts. All ages include cases with unknown age.

Rate range

(per 100,000 population)

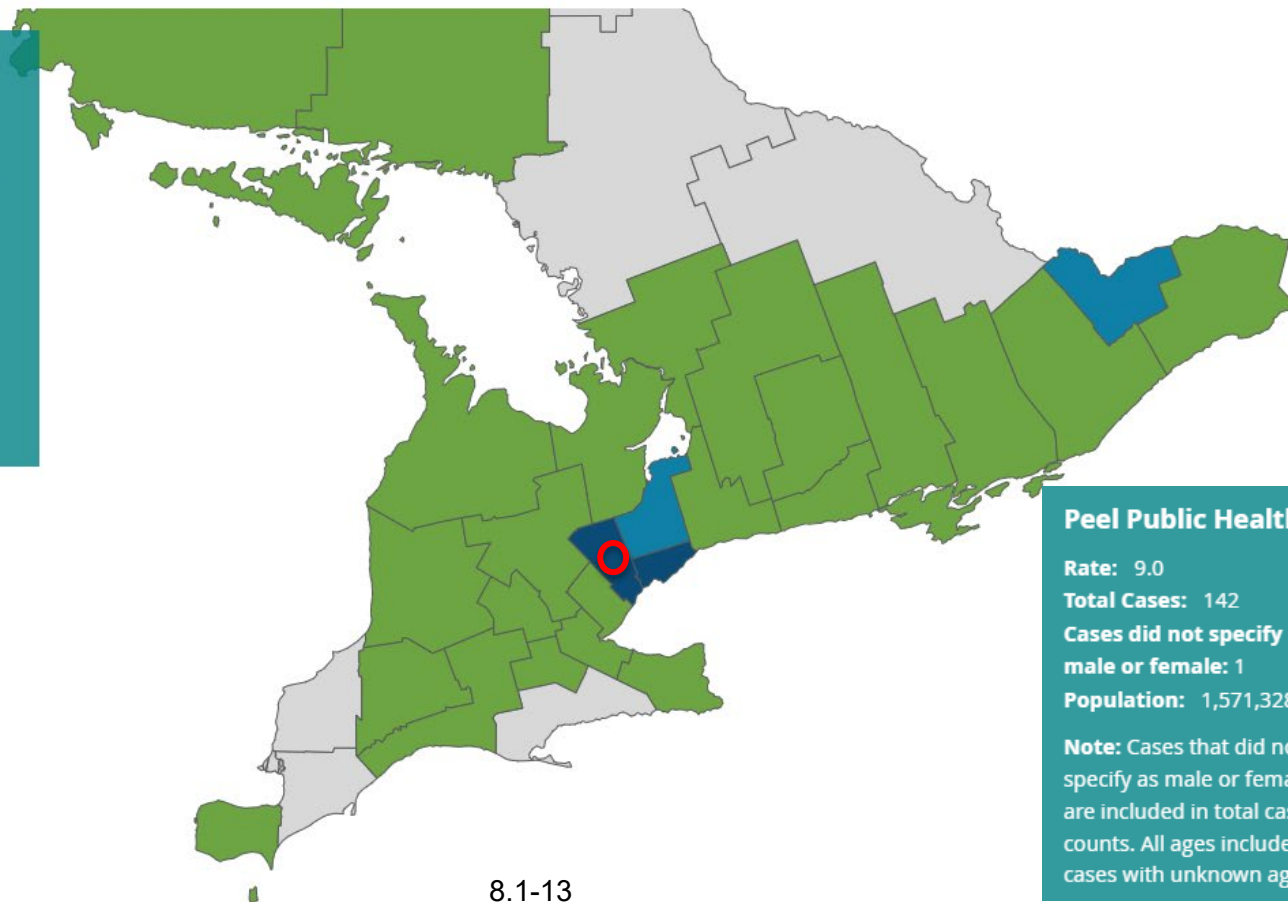
0.0

0.1 - 4.3

4.4 - 8.6

8.7 - 12.9

13.0 - 17.2



Peel Public Health

Rate: 9.0

Total Cases: 142

Cases did not specify as male or female: 1

Population: 1,571,328

Note: Cases that did not specify as male or female are included in total case counts. All ages include cases with unknown age.

Public Health **Mandate**

- Minimize risk to individuals and the community through early detection and treatment.
- Investigate contacts.
- Identify and manage individuals with latent TB.
- Ensure provision of free treatment.

Public Health Support & Care

- Provide care and support for duration of illness.
- Work closely with other health care providers.
- Conduct Directly Observed Therapy (DOT).
- Provide psychosocial support.
- Connect clients to community supports.
- Reduce barriers to treatment.



Limited Ability to provide Tuberculosis Care

- Staffing levels impede ability to provide Canadian Tuberculosis Standards of care.
- Program struggles to meet mandated actions.
- Peel residents receive sub-optimal care compared to neighbouring jurisdictions.
- Caseloads are unsustainable and are leading to staff burnout and retention challenges.



Source [gettyimages.ca](https://www.gettyimages.ca)

We Need a Stronger Program

- TB is preventable and curable.
- A strong, well-resourced public health program will positively impact vulnerable individuals and families living with TB.
- Ensuring early detection, treatment completion and transmission prevention will protect Peel's residents.
- Educating health care providers and the community will reduce stigma and barriers.



Questions?

Contact info:

Judy Buchan judy.buchan@peelregion.ca

